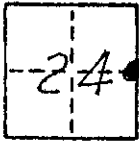


CORNER RECORD

COUNTY OF Modern T. 9 S. R. 17 E. MDB MERIDIAN CALIFORNIA
 CORNER TYPE: GOV'T. CORNER MEANDER RANCHO CONTROL OTHER
 CORNER IDENTIFICATION - DATE OF VISIT APRIL 16 1975



CORNER - LEFT AS FOUND FOUND AND TAGGED REESTABLISHED OBLITERATED CORNER REBUILT

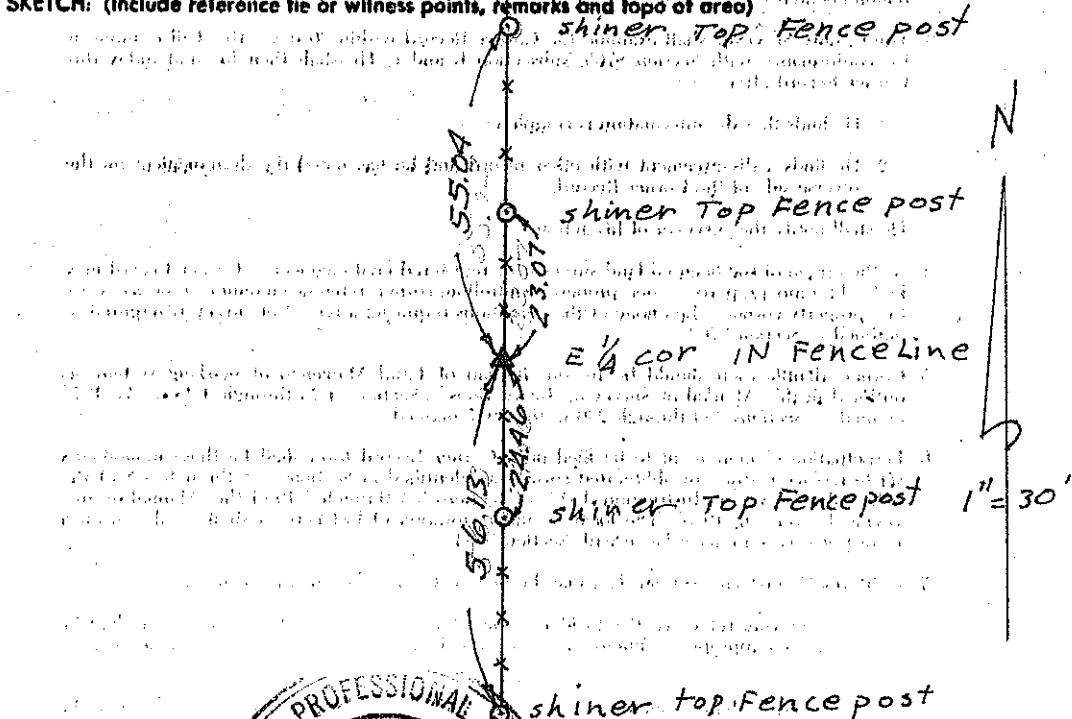
PHYSICAL DESCRIPTION OF CORNER FOUND; EVIDENCE AND METHOD USED TO IDENTIFY OR REESTABLISH

Found 3/4" I.P. 6" up RCE 9767

PHYSICAL DESCRIPTION OF MONUMENTS REBUILT OR PERPETUATED

CALIFORNIA COORDINATE SYSTEM ORDER: FIRST SECOND THIRD
 STATIONS USED: NGS (USC & GS) STATE COUNTY OTHER STATION _____ STATION _____
 ZONE _____ ELEVATION _____ NORTHINGS (N) _____ EASTINGS (E) _____

SKETCH: (Include reference tie or witness points, remarks and topo of area)



SURVEYOR'S CERTIFICATE
 THIS CORNER RECORD WAS PREPARED BY ME [Signature] UNDER MY
 DIRECTION IN CONFORMANCE WITH THE LAND SURVEYERS ACT
 ON April 24 1975 P. No. 13,900
 SIGNED: [Signature]
 I.S. or R.C.E. No. _____
 STATE OF CALIFORNIA

COUNTY SURVEYOR'S CERTIFICATE
 THE CORNER RECORD WAS RECEIVED 5-1 1975
 AND EXAMINED AND FILED 5-6 1975
 BY: [Signature]
 TITLE: County Engineer
 DOCUMENT No. 75-17-02
 STATEMENT ON BACK OF SHEET YES NO