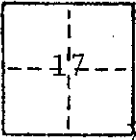


CORNER RECORD

COUNTY OF MADERA T. 9S R. 17E M.D.B.&M. MERIDIAN CALIFORNIA
 CORNER TYPE: GOV'T. CORNER MEANDER RANCHO CONTROL OTHER
 CORNER IDENTIFICATION — DATE OF VISIT 1-26-77



S.E. Corner Section 17, T9S, ^{R17E} M.D.B.&M.

CORNER — LEFT AS FOUND FOUND AND TAGGED REESTABLISHED OBLITERATED CORNER REBUILT

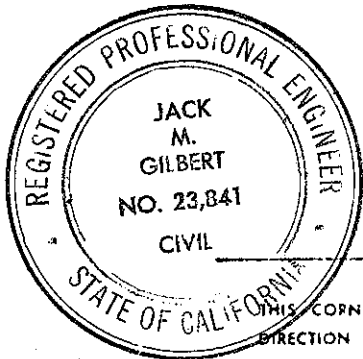
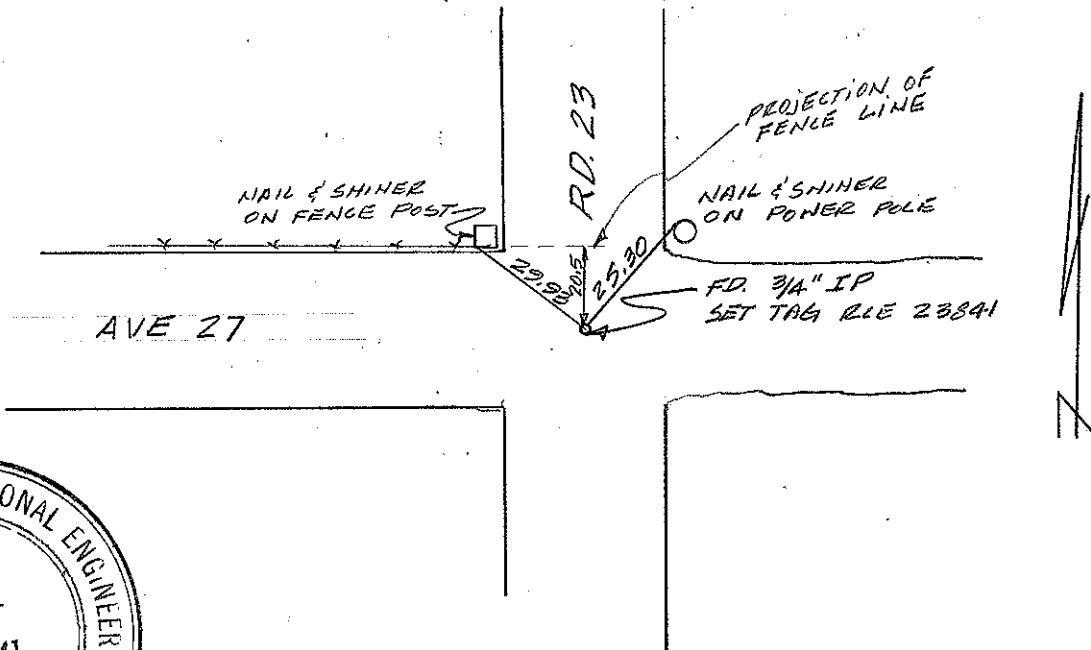
PHYSICAL DESCRIPTION OF CORNER FOUND; EVIDENCE AND METHOD USED TO IDENTIFY OR REESTABLISH

Found 3/4" Iron Pipe, set tag RCE 23841

PHYSICAL DESCRIPTION OF MONUMENTS REBUILT OR PERPETUATED

CALIFORNIA COORDINATE SYSTEM ORDER: FIRST SECOND THIRD
 STATIONS USED: NOS (USC & GS) STATE COUNTY OTHER STATION _____ STATION _____
 ZONE _____ ELEVATION _____ NORTHINGS (Y) _____ EASTINGS (X) _____

SKETCH: (Include reference tie or witness points, remarks and topo of area)



SURVEYOR'S CERTIFICATE
 THIS CORNER RECORD WAS PREPARED BY ME OR UNDER MY DIRECTION IN CONFORMANCE WITH THE LAND SURVEYORS ACT ON 4-6-77 1977

SIGNED: Jack M. Gilbert
 L.S. or R.C.E. No. _____

SEAL

COUNTY SURVEYOR'S CERTIFICATE
 THE CORNER RECORD WAS RECEIVED 4-7-77 1977
 AND EXAMINED AND FILED May 2 1977
 BY: A. Brode
 TITLE: Co. Eng.
 DOCUMENT No. 77-06-20

STATEMENT ON BACK OF SHEET

YES NO