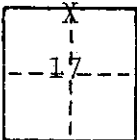


CORNER RECORD

COUNTY OF MADERA T. 9S R. 17E M.D.B. & M. MERIDIAN CALIFORNIA
 CORNER TYPE: GOVT. CORNER MEANDER RANCHO CONTROL OTHER
 CORNER IDENTIFICATION - DATE OF VISIT 2-11 19 77



Witness to North 1/4 Corner Section 17, T9S,
 917E, M.D.B. & M.

CORNER - LEFT AS FOUND FOUND AND TAGGED REESTABLISHED OBLITERATED CORNER REBUILT

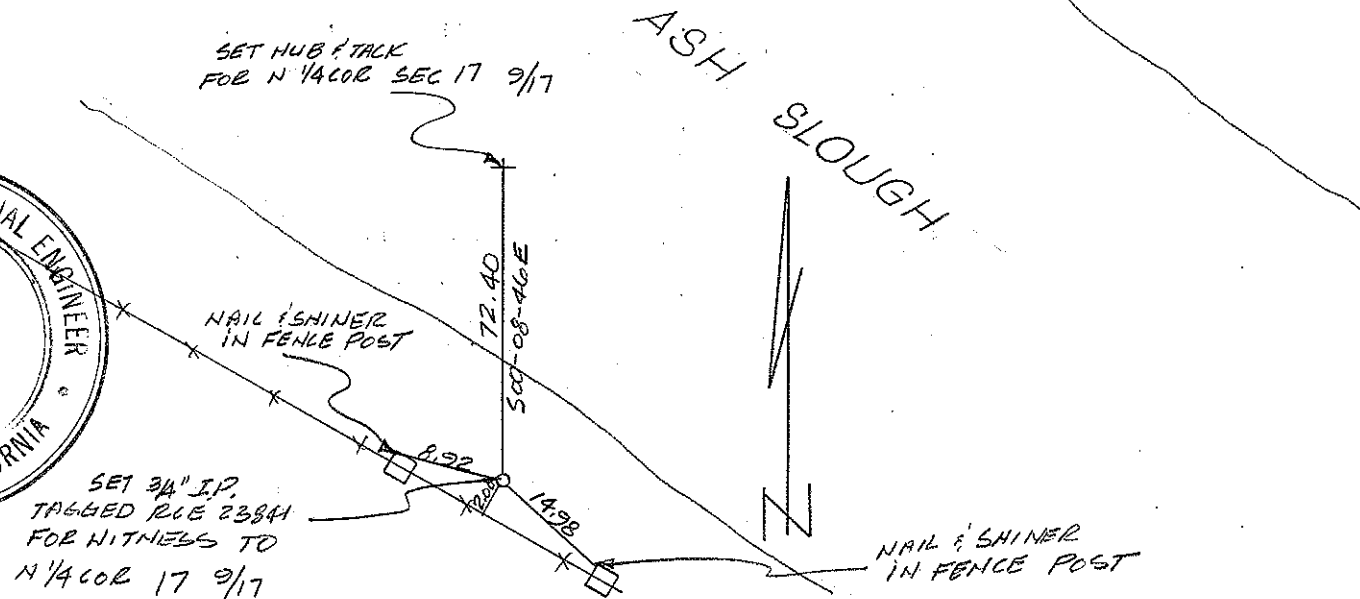
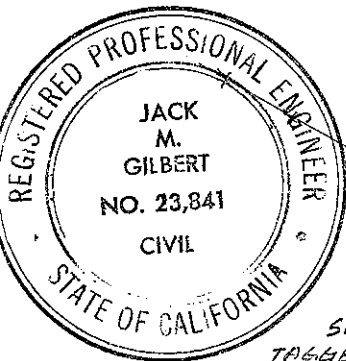
PHYSICAL DESCRIPTION OF CORNER FOUND; EVIDENCE AND METHOD USED TO IDENTIFY OR REESTABLISH

Set temporary point for north 1/4 corner Section 17 on split between N.E. Corner and NW Corner. Set 3/4" Iron Pipe tagged RCE 23841 to south on center section line at top of bank to Ash Slough for witness to north 1/4 corner Section 17, T9S, R17E, M.D.B. & M.

PHYSICAL DESCRIPTION OF MONUMENTS REBUILT OR PERPETUATED

CALIFORNIA COORDINATE SYSTEM ORDER: FIRST SECOND THIRD
 STATIONS USED: NGS (USC & GS) STATE COUNTY OTHER STATION _____ STATION _____
 ZONE _____ ELEVATION _____ NORTHINGS (Y) _____ EASTINGS (X) _____

SKETCH: (Include reference tie or witness points, remarks and topo of area)



SURVEYOR'S CERTIFICATE
 THIS CORNER RECORD WAS PREPARED BY ME OR UNDER MY DIRECTION IN CONFORMANCE WITH THE LAND SURVEYORS ACT ON 4-6 19 77
 SIGNED: Jack M. Gilbert
 L.S. or R.C.E. No. _____

COUNTY SURVEYOR'S CERTIFICATE
 THE CORNER RECORD WAS RECEIVED 4-7-1977
 AND EXAMINED AND FILED May 2 1977
 BY: A. Grote
 TITLE: Co. Engr.
 DOCUMENT No. 77-06-22
 STATEMENT ON BACK OF SHEET YES NO

SEAL