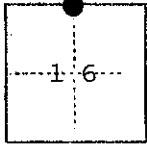


# CORNER RECORD

COUNTY OF Madera T. 9 S. R. 17 E. M.D.B. & MERIDIAN CALIFORNIA

CORNER TYPE: GOV'T. CORNER  MEANDER  RANCHO  CONTROL  OTHER

CORNER IDENTIFICATION — DATE OF VISIT February 19 75



North quarter corner, Section 16, T. 9 S., R. 17 E., M.D.B. & M.

CORNER — LEFT AS FOUND  FOUND AND TAGGED  REESTABLISHED OBLITERATED CORNER  REBUILT

**PHYSICAL DESCRIPTION OF CORNER FOUND; EVIDENCE AND METHOD USED TO IDENTIFY OR REESTABLISH**

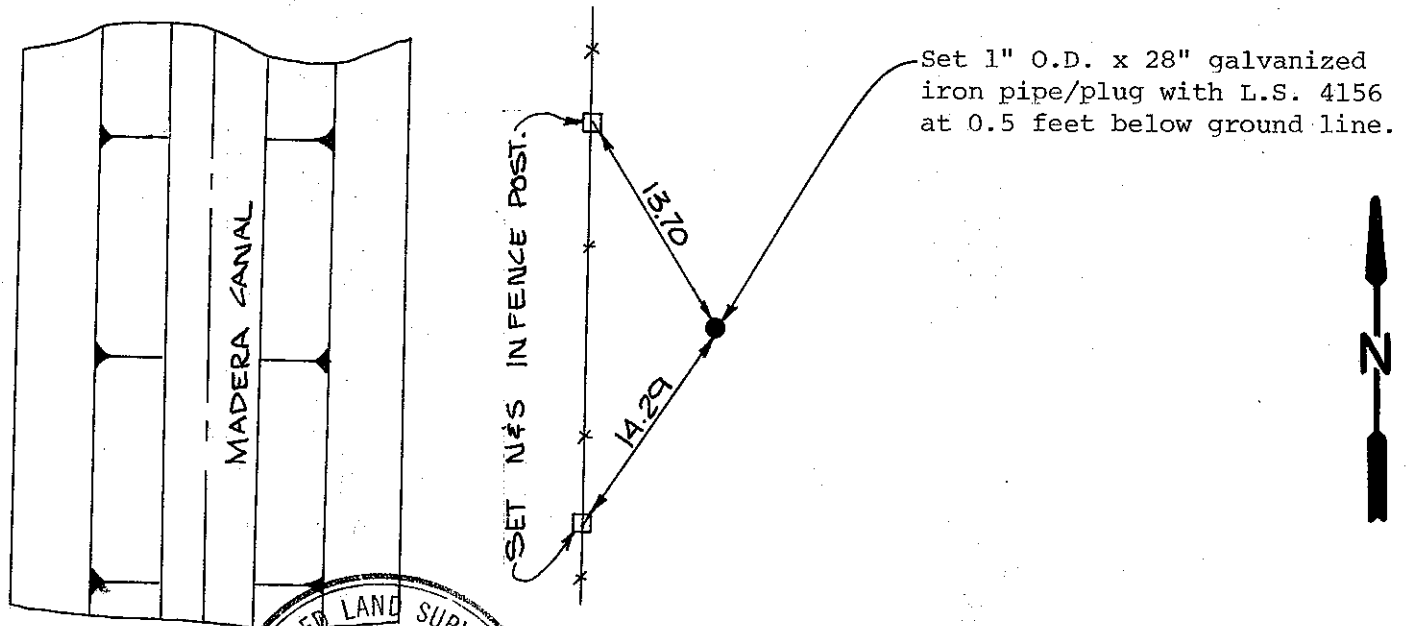
The corner was re-established by proportional measurement between the Northwest corner and the Northeast corner of Section 16, Township 9 South, Range 17 East, M.D.B. & M.

**PHYSICAL DESCRIPTION OF MONUMENTS REBUILT OR PERPETUATED**

Set a 1" O.D. x 28" galvanized iron pipe with a plug marked L.S. 4156 at 0.5 feet below the ground line.

CALIFORNIA COORDINATE SYSTEM ORDER: FIRST  SECOND  THIRD   
 STATIONS USED: NGS (USC & GS)  STATE  COUNTY  OTHER  STATION \_\_\_\_\_ STATION \_\_\_\_\_  
 ZONE \_\_\_\_\_ ELEVATION \_\_\_\_\_ NORTHINGS (Y) \_\_\_\_\_ EASTINGS (X) \_\_\_\_\_

**SKETCH: (include reference tie or witness points, remarks and topo of area)**



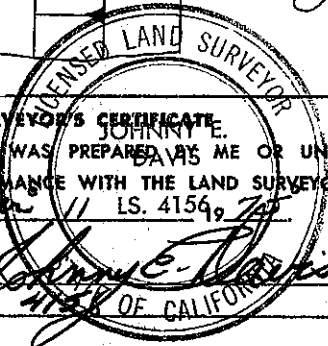
Set 1" O.D. x 28" galvanized iron pipe/plug with L.S. 4156 at 0.5 feet below ground line.

**SURVEYOR'S CERTIFICATE**

THIS CORNER RECORD WAS PREPARED BY ME OR UNDER MY DIRECTION IN CONFORMANCE WITH THE LAND SURVEYORS ACT ON November 11 LS. 4156, 75

SIGNED: Johnny E. Davis

L.S. 4156 No. \_\_\_\_\_ OF CALIFORNIA



SEAL

**COUNTY SURVEYOR'S CERTIFICATE**

THE CORNER RECORD WAS RECEIVED 1-30 19 76 AND EXAMINED AND FILED 2-5 19 76

BY: A. Grate  
 TITLE: County Engineer

DOCUMENT No. 76-01-7

STATEMENT ON BACK OF SHEET

YES  NO