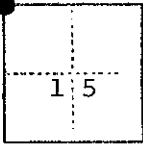


CORNER RECORD

COUNTY OF Madera T. 9 S. R. 17 E. M.D.B. & M. MERIDIAN CALIFORNIA

CORNER TYPE: GOV'T. CORNER MEANDER RANCHO CONTROL OTHER

CORNER IDENTIFICATION — DATE OF VISIT February 19 75



Northwest corner, Section 15, T. 9 S., R. 17 E., M.D.B. & M.

CORNER — LEFT AS FOUND FOUND AND TAGGED REESTABLISHED OBLITERATED CORNER REBUILT

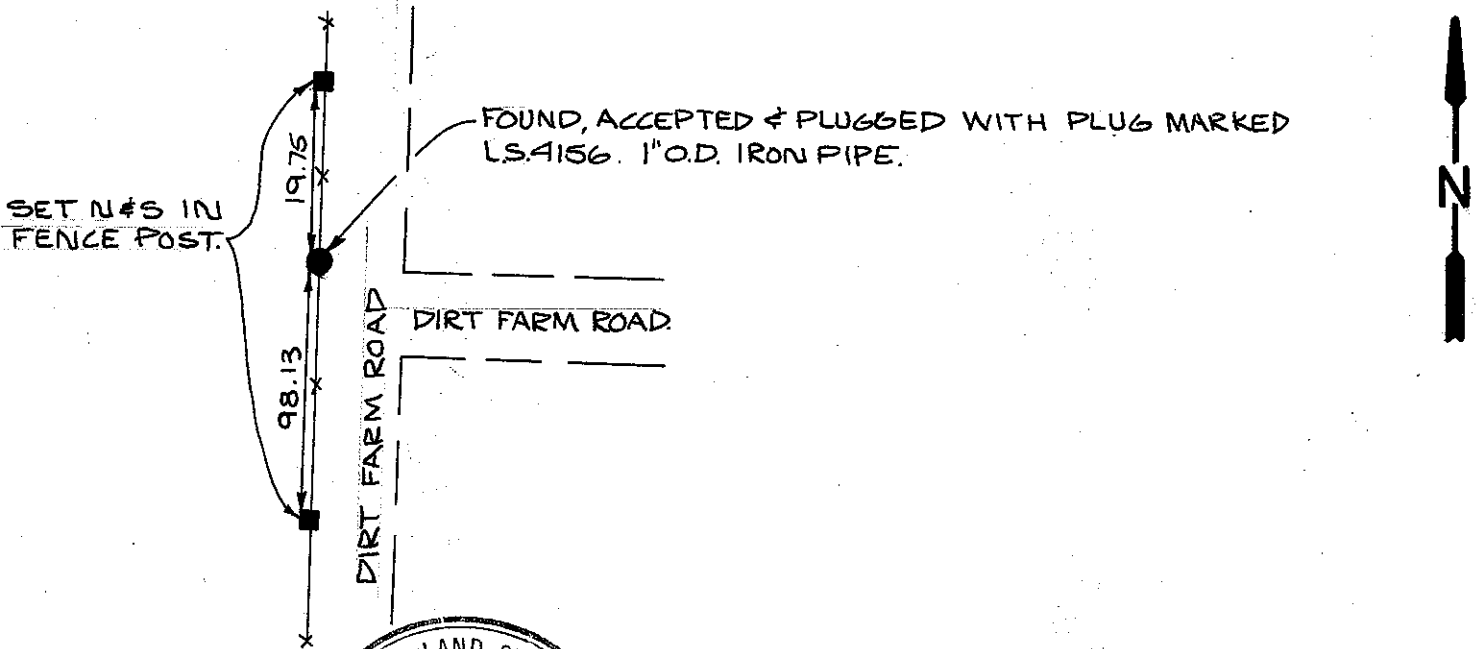
PHYSICAL DESCRIPTION OF CORNER FOUND; EVIDENCE AND METHOD USED TO IDENTIFY OR REESTABLISH

Found and accepted a 1" O.D. pipe in north/south fence line at 0.5 feet below ground line.

PHYSICAL DESCRIPTION OF MONUMENTS REBUILT OR PERPETUATED

CALIFORNIA COORDINATE SYSTEM ORDER: FIRST SECOND THIRD
STATIONS USED: NGS (USC & GS) STATE COUNTY OTHER STATION _____ STATION _____
ZONE _____ ELEVATION _____ NORTHINGS (Y) _____ EASTINGS (X) _____

SKETCH: (Include reference tie or witness points, remarks and topo of area)

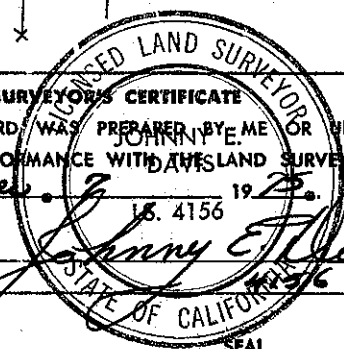


SURVEYOR'S CERTIFICATE

THIS CORNER RECORD WAS PREPARED BY ME OR UNDER MY DIRECTION IN CONFORMANCE WITH THE LAND SURVEYORS ACT ON November 7 19 75 L.S. 4156

SIGNED: Johnny E. Hayes

L.S. or R.C.E. No. _____



COUNTY SURVEYOR'S CERTIFICATE

THE CORNER RECORD WAS RECEIVED 1-30 19 76 AND EXAMINED AND FILED 2-5 19 76 BY: A. Grote TITLE: County Engineer DOCUMENT No. 76-01-6

STATEMENT ON BACK OF SHEET

YES NO