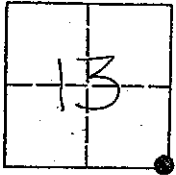


CORNER RECORD

COUNTY OF MADERA TOWNSHIP 9 SOUTH, RANGE 17 EAST, M.D.B.&M. CALIFORNIA

CORNER TYPE: GOV'T. CORNER MEANDER RANCHO CONTROL OTHER

CORNER IDENTIFICATION - DATE OF VISIT: 5-20 19 93



S.E. COR. 13, 9/17

CORNER - LEFT AS FOUND FOUND AND TAGGED REESTABLISHED OBLITERATED CORNER REBUILT

PHYSICAL DESCRIPTION OF CORNER FOUND: EVIDENCE AND METHOD USED TO IDENTIFY OR REESTABLISH

REESTABLISHED SECTION CORNER BY SINGLE PROPORTIONATE MEASUREMENT FROM ADJACENT SECTION CORNER ALONG THE RANGE LINE R.ITE. (REF: PM#3221)

PHYSICAL DESCRIPTION OF MONUMENTS REBUILT OR PERPETUATED

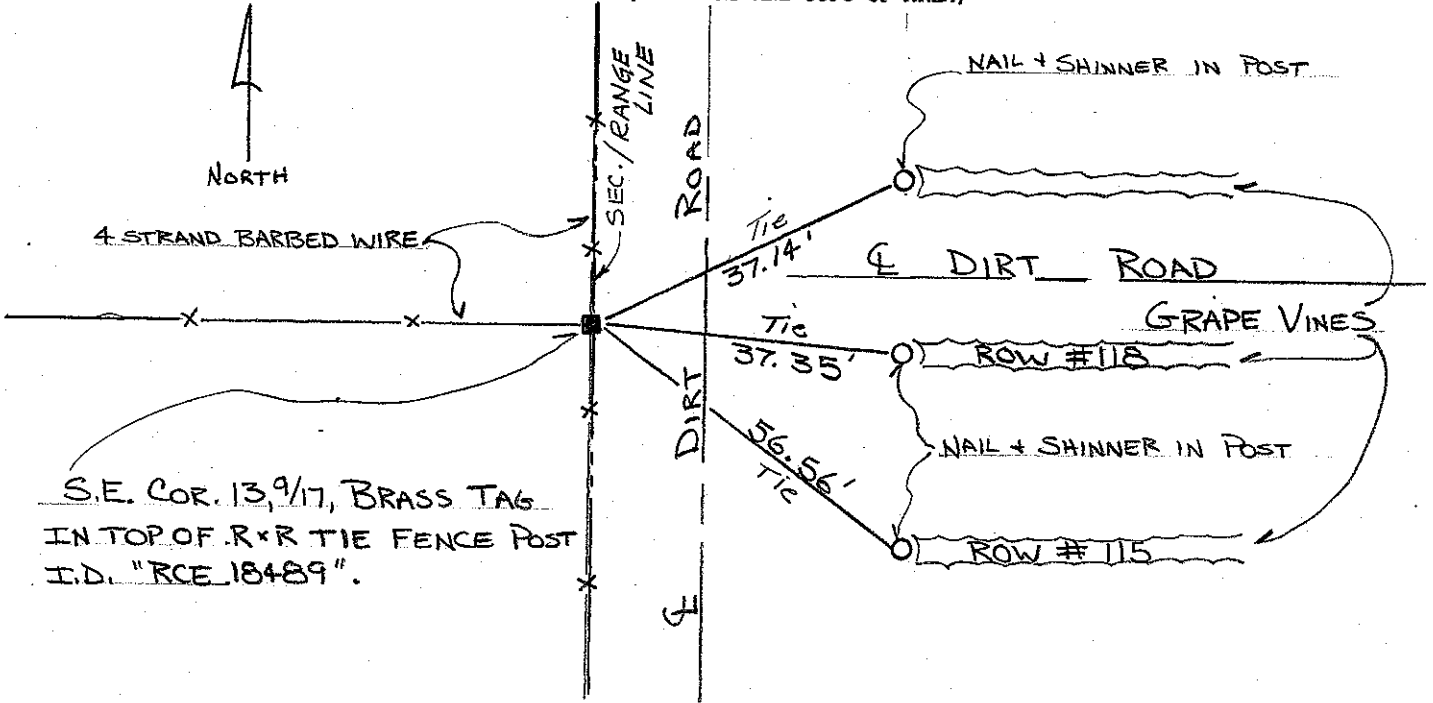
SET BRASS TAG IN TOP OF RAIL ROAD TIE FENCE POST I.D. "RCE 18489".

CALIFORNIA COORDINATE SYSTEM ORDER: FIRST SECOND THIRD

STATIONS USED: NGS (USC & GS) STATE COUNTY OTHER STATION _____ STATION _____

ZONE _____ ELEVATION _____ NORTHINGS (Y) _____ EASTINGS (X) _____

SKETCH: (INCLUDE REFERENCE TIE OR WITNESS POINTS, REMARKS AND TOPO OF AREA)



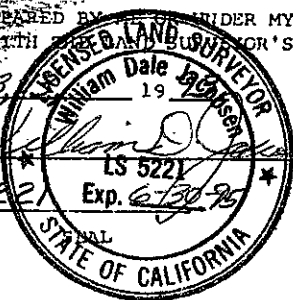
REVISED 8-13-93

SURVEYOR'S CERTIFICATE

THIS CORNER RECORD WAS PREPARED BY _____ UNDER MY DIRECTION IN CONFORMANCE WITH _____ ACT ON _____

SIGNED: _____

L.S. or R.C.E. No: 5221



COUNTY SURVEYOR'S CERTIFICATE

THE CORNER RECORD WAS RECEIVED _____ 19 _____

AND EXAMINED AND FILED 8-23 19 93.

BY: K. Kell

TITLE: Eng. Tech.

DOCUMENT No: _____

STATEMENT ON BACK OF SHEET: YES NO