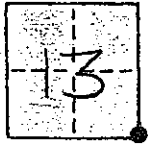


CORNER RECORD

COUNTY OF MADERA T. 9 S. R. 17 E MOB MERIDIAN CALIFORNIA

CORNER TYPE: GOV'T. CORNER MEANDER RANCHO CONTROL OTHER

CORNER IDENTIFICATION — DATE OF VISIT 5/22 19 92



S.E. Cor. 13, 9/17

CORNER — LEFT AS FOUND FOUND AND TAGGED REESTABLISHED OBLITERATED CORNER REBUILT

PHYSICAL DESCRIPTION OF CORNER FOUND; EVIDENCE AND METHOD USED TO IDENTIFY OR REESTABLISH

REESTABLISHED SECTION CORNER BY SINGLE PROPORTIONATE MEASUREMENT FROM ADJACENT SECTION CORNER ALONG THE RANGE LINE R 17 E.

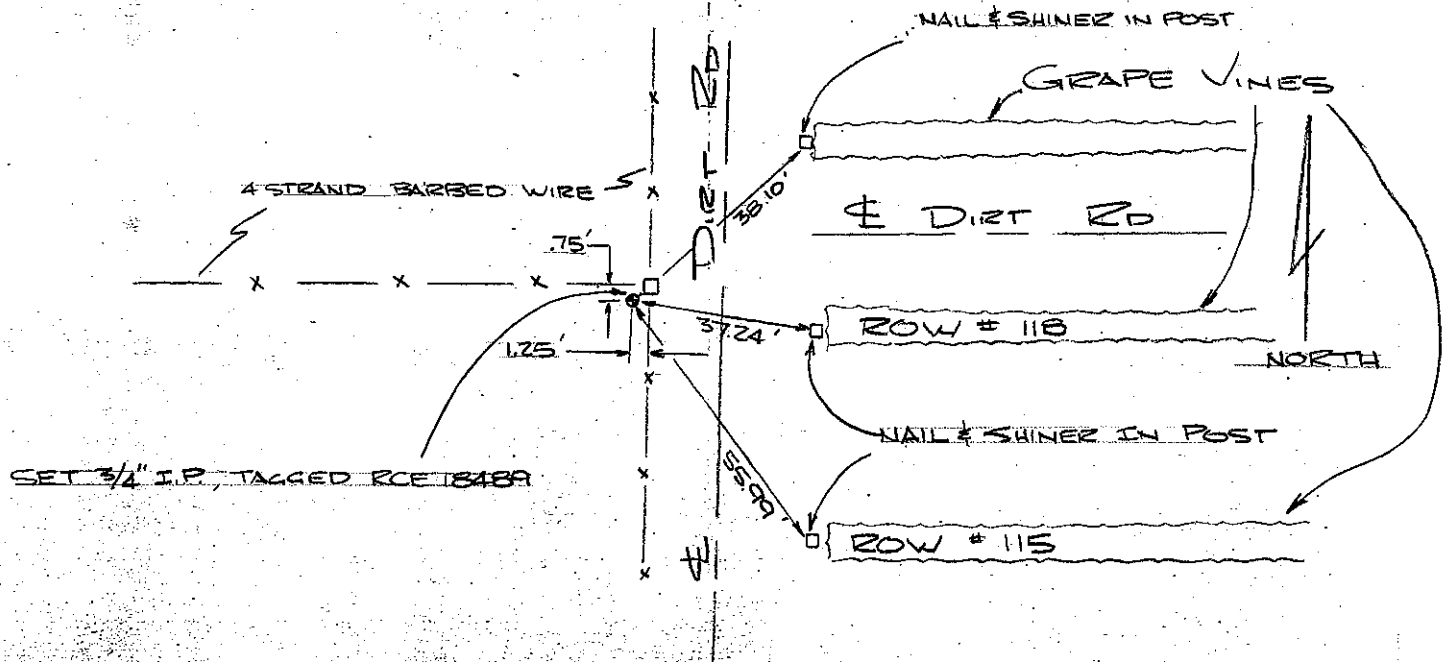
(REF: PM#3221)

PHYSICAL DESCRIPTION OF MONUMENTS REBUILT OR PERPETUATED

SET 3/4" I.P. ; 24" LONG, DN. 0.25, TAGGED "RCE. 18489"

CALIFORNIA COORDINATE SYSTEM ORDER: FIRST SECOND THIRD
 STATIONS USED: NGS (USC & GS) STATE COUNTY OTHER STATION _____ STATION _____
 ZONE _____ ELEVATION _____ NORTHINGS (Y) _____ EASTINGS (X) _____

SKETCH: (Include reference tie or witness points, remarks and topo of area)



SURVEYOR'S CERTIFICATE

THIS CORNER RECORD WAS PREPARED BY ME OR UNDER MY DIRECTION IN CONFORMANCE WITH THE LAND SURVEY ACT ON July 1

SIGNED: William D. Jakobson

L.S. or R.C.E. No. 5221



COUNTY SURVEYOR'S CERTIFICATE

THE CORNER RECORD WAS RECEIVED _____ 19____ AND EXAMINED AND FILED 7-6 1992

BY: W. Douglas Shinson

TITLE: Co. Eng.

DOCUMENT No. _____

STATEMENT ON BACK OF SHEET

YES NO