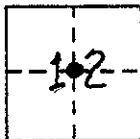


CORNER RECORD

COUNTY OF MADERA T. 9S. R. 17E. M.D.B. & MERIDIAN CALIFORNIA  
CORNER TYPE: GOV'T. CORNER  MEANDER  RANCHO  CONTROL  OTHER   
CORNER IDENTIFICATION - DATE OF VISIT NOVEMBER 10 1976



CENTER 1/4 CORNER SECTION 12

CORNER - LEFT AS FOUND  FOUND AND TAGGED  REESTABLISHED OBLITERATED CORNER  REBUILT

PHYSICAL DESCRIPTION OF CORNER FOUND; EVIDENCE AND METHOD USED TO IDENTIFY OR REESTABLISH

FOUND 1" REBAR - UP 6"

PHYSICAL DESCRIPTION OF MONUMENTS REBUILT OR PERPETUATED

I TAGGED L.S. 2737 (WIRED ON).

CALIFORNIA COORDINATE SYSTEM ORDER: FIRST  SECOND  THIRD   
STATIONS USED: NGS (USC & GS)  STATE  COUNTY  OTHER  STATION \_\_\_\_\_ STATION \_\_\_\_\_  
ZONE \_\_\_\_\_ ELEVATION \_\_\_\_\_ NORTHINGS (Y) \_\_\_\_\_ EASTINGS (X) \_\_\_\_\_

SKETCH: (Include reference tie or witness points, remarks and topo of area)

4.5' W. OF FENCE N.  
ON LINE FENCE W.  
39.0' N. OF FENCE W. (S/S AVENUE W.).  
32.2' W. OF FENCE S.  
46.45' NW OF 4" STEEL POST N/S OF GATE (FENCE S.)  
47.50' NE OF 4" STEEL POST SW/S OF GATE (FENCE W.)  
J.N. 76-145 F.B. 545 p. 50

SURVEYOR'S CERTIFICATE

THIS CORNER RECORD WAS PREPARED BY ME OR UNDER MY DIRECTION IN CONFORMANCE WITH THE LAND SURVEYORS ACT ON NOVEMBER 22, 1976.

SIGNED: William D. Gentry  
L.S. & R.C.E. No.: 2737

SEAL

COUNTY SURVEYOR'S CERTIFICATE

THE CORNER RECORD WAS RECEIVED DECEMBER 6, 1976  
AND EXAMINED AND FILED DEC 13, 1976.

BY: A. Grote

TITLE: Co. Engr.

DOCUMENT No. 36-37-02

STATEMENT ON BACK OF SHEET

YES

NO