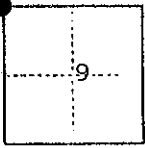


CORNER RECORD

COUNTY OF Madera T. 9 S. R. 17 E. M.D.B. & MERIDIAN CALIFORNIA

CORNER TYPE: GOVT. CORNER MEANDER RANCHO CONTROL OTHER

CORNER IDENTIFICATION -- DATE OF VISIT February 1975



Northwest corner, Section 9, T. 9 S., R. 17 E., M.D.B. & M.

CORNER -- LEFT AS FOUND FOUND AND TAGGED REESTABLISHED OBLITERATED CORNER REBUILT

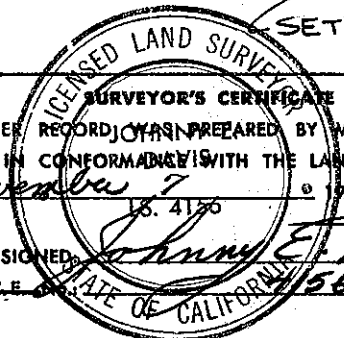
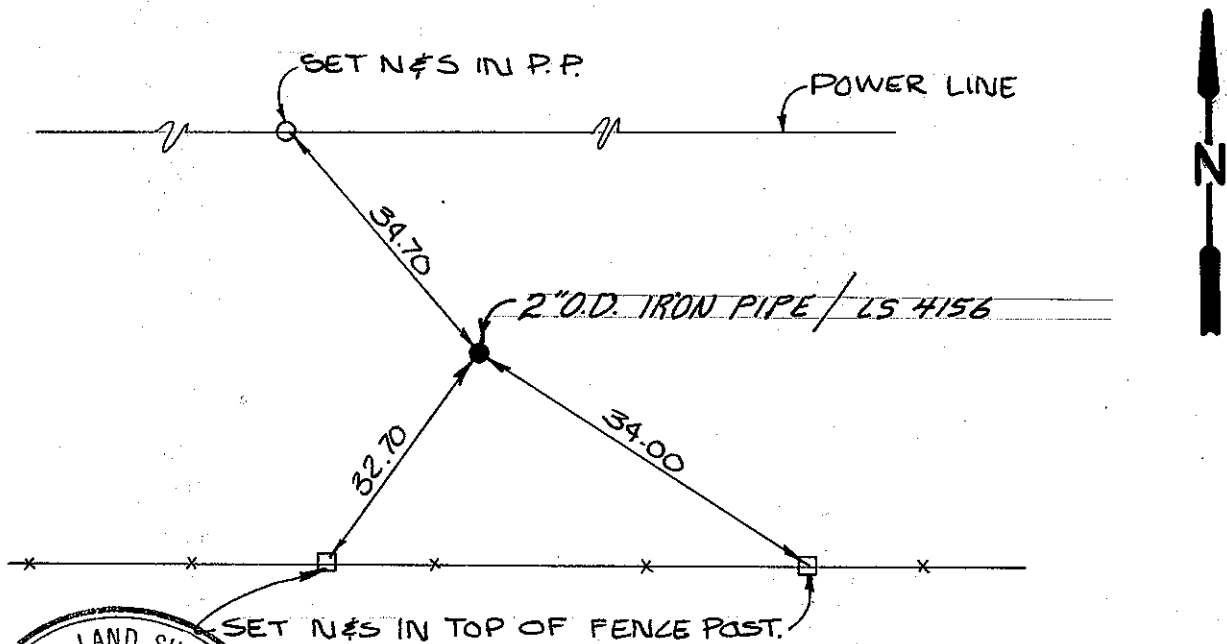
PHYSICAL DESCRIPTION OF CORNER FOUND; EVIDENCE AND METHOD USED TO IDENTIFY OR REESTABLISH

2" O.D. iron pipe with 2" x 2" hub.

PHYSICAL DESCRIPTION OF MONUMENTS REBUILT OR PERPETUATED

CALIFORNIA COORDINATE SYSTEM ORDER: FIRST SECOND THIRD
STATIONS USED: NGS (USC & GS) STATE COUNTY OTHER STATION _____ STATION _____
ZONE _____ ELEVATION _____ NORTHINGS (Y) _____ EASTINGS (X) _____

SKETCH: (include reference tie or witness points, remarks and topo of area)



SURVEYOR'S CERTIFICATE
THIS CORNER RECORD WAS PREPARED BY ME OR UNDER MY DIRECTION IN CONFORMANCE WITH THE LAND SURVEYORS ACT ON November 7 1975
L.S. # 18,4120

SIGNED: Johnny E. Davis
L.S. # 18,4120

SEAL

COUNTY SURVEYOR'S CERTIFICATE
THE CORNER RECORD WAS RECEIVED 1-30 1976
AND EXAMINED AND FILED 2-5 1976

BY: A. Grote
TITLE: County Engineer

DOCUMENT No. 76-01-4

STATEMENT ON BACK OF SHEET

YES NO