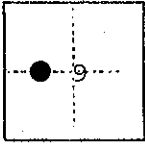


# CORNER RECORD

COUNTY OF Madera T. 9 S. R. 17 E. M.D.B. & S MERIDIAN CALIFORNIA

CORNER TYPE: GOV'T. CORNER  MEANDER  RANCHO  CONTROL  OTHER

CORNER IDENTIFICATION — DATE OF VISIT February 19 75



1/16 Corner: Northwest corner of the Northeast quarter of the Southwest quarter of Section 9, T. 9 S., R. 17 E., M.D.B. & M.

CORNER — LEFT AS FOUND  FOUND AND TAGGED  REESTABLISHED OBLITERATED CORNER  REBUILT

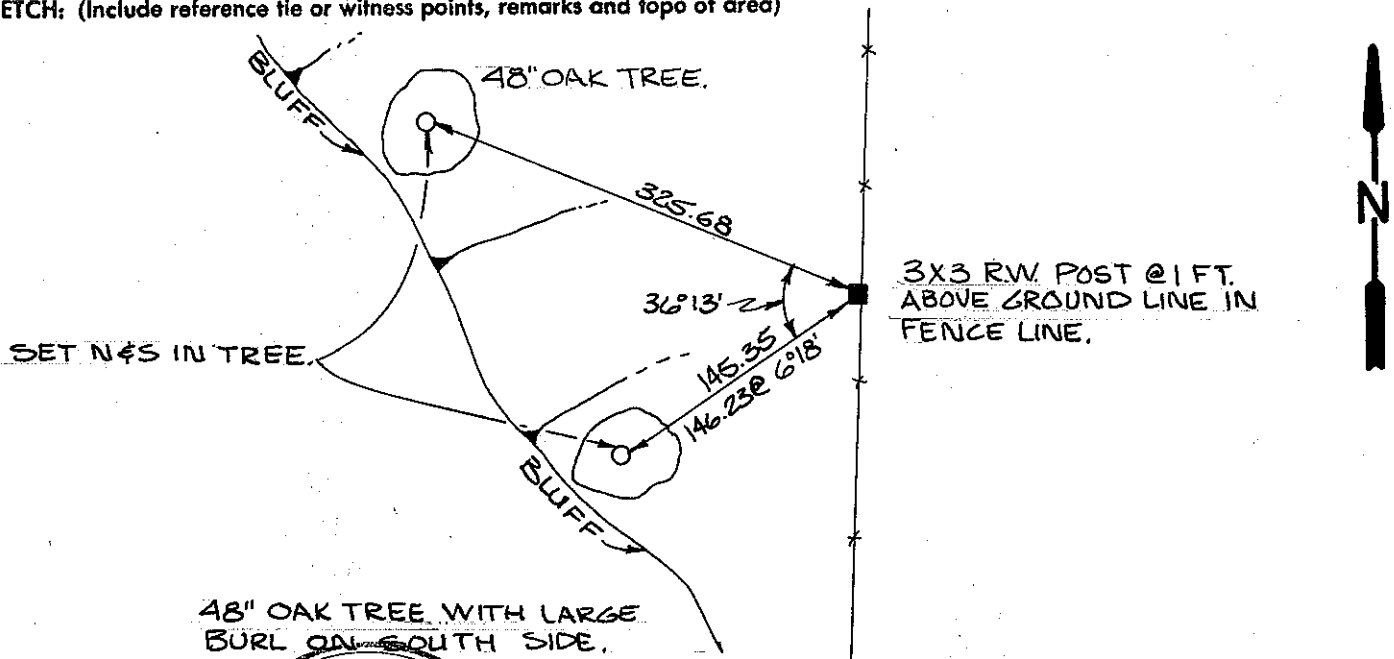
**PHYSICAL DESCRIPTION OF CORNER FOUND; EVIDENCE AND METHOD USED TO IDENTIFY OR REESTABLISH**

3" x 3" Redwood post extending one foot above ground line in North/South fence line.

**PHYSICAL DESCRIPTION OF MONUMENTS REBUILT OR PERPETUATED**

CALIFORNIA COORDINATE SYSTEM ORDER: FIRST  SECOND  THIRD   
 STATIONS USED: NGS (USC & GS)  STATE  COUNTY  OTHER  STATION \_\_\_\_\_ STATION \_\_\_\_\_  
 ZONE \_\_\_\_\_ ELEVATION \_\_\_\_\_ NORTHINGS (Y) \_\_\_\_\_ EASTINGS (X) \_\_\_\_\_

**SKETCH: (Include reference tie or witness points, remarks and topo of area)**



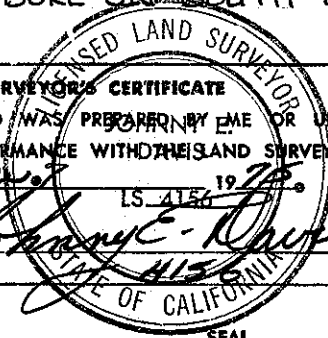
48" OAK TREE WITH LARGE BURL ON SOUTH SIDE.

**SURVEYOR'S CERTIFICATE**

THIS CORNER RECORD WAS PREPARED BY ME OR UNDER MY DIRECTION IN CONFORMANCE WITH THE LAND SURVEYORS ACT ON November 7 19 75

SIGNED [Signature] L.S. No. 4156

L.S. or R.G.S. No. \_\_\_\_\_ STATE OF CALIFORNIA



**COUNTY SURVEYOR'S CERTIFICATE**

THE CORNER RECORD WAS RECEIVED 1-30 19 76 AND EXAMINED AND FILED 2-5 19 76

BY: A. Grotte

TITLE: County Engineer

DOCUMENT No. 76-01-1

STATEMENT ON BACK OF SHEET

YES  NO