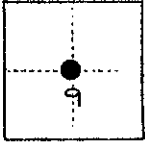


CORNER RECORD

COUNTY OF Madera T. 9 S. R. 17 E. M.D.B. & MERIDIAN CALIFORNIA

CORNER TYPE: GOVT. CORNER MEANDER RANCHO CONTROL OTHER

CORNER IDENTIFICATION -- DATE OF VISIT February 19 75



Center quarter corner, Section 9, T. 9 S., R. 17 E., M.D.B. & M.

CORNER — LEFT AS FOUND FOUND AND TAGGED REESTABLISHED OBLITERATED CORNER REBUILT

PHYSICAL DESCRIPTION OF CORNER FOUND; EVIDENCE AND METHOD USED TO IDENTIFY OR REESTABLISH

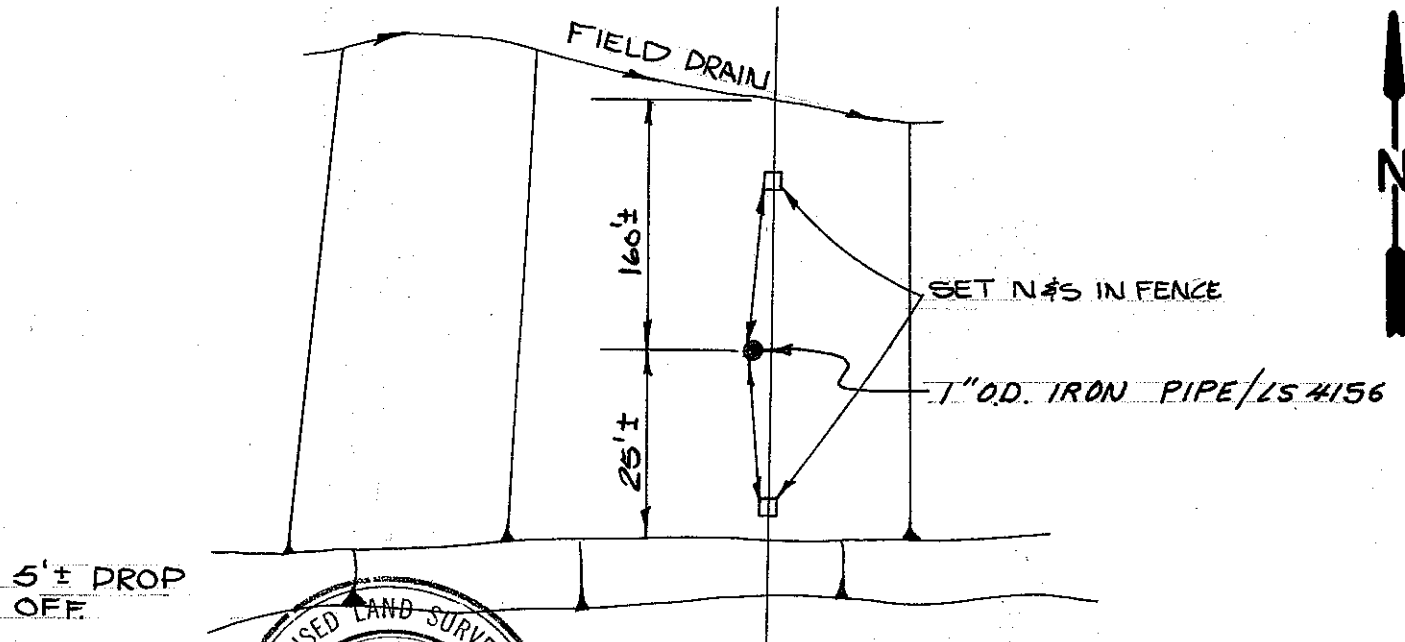
Found and accepted 1" O.D. x 12" iron pipe. Replaced 12" iron pipe with 1" O.D. x 28" galvanized iron pipe with a plastic plug marked L.S. 4156 at 0.5 feet below ground line.

PHYSICAL DESCRIPTION OF MONUMENTS REBUILT OR PERPETUATED

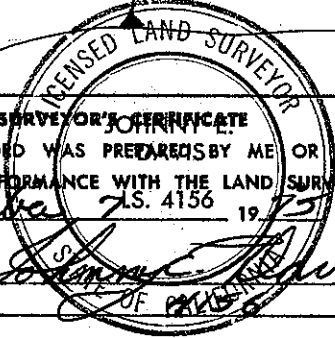
Replaced 1" x 12" iron pipe with a 1" O.D. x 28" galvanized iron pipe with a plastic plug marked L.S. 4156. Top of pipe at 0.5 feet below ground line.

CALIFORNIA COORDINATE SYSTEM ORDER: FIRST SECOND THIRD
 STATIONS USED: NGS (USC & GS) STATE COUNTY OTHER STATION _____ STATION _____
 ZONE _____ ELEVATION _____ NORTHINGS (Y) _____ EASTINGS (X) _____

SKETCH: (Include reference tie or witness points, remarks and topo of area)



5' ± DROP OFF



SURVEYOR'S CERTIFICATE
 THIS CORNER RECORD WAS PREPARED BY ME OR UNDER MY DIRECTION IN CONFORMANCE WITH THE LAND SURVEYORS ACT ON November 7 19 75
 SIGNED: [Signature]
 L.S. or P.C. No.:

COUNTY SURVEYOR'S CERTIFICATE
 THE CORNER RECORD WAS RECEIVED 1-30 19 76
 AND EXAMINED AND FILED 2-5 19 76
 BY: A. Grote
 TITLE: County Engineer
 DOCUMENT No. 76-01-2

STATEMENT ON BACK OF SHEET YES NO