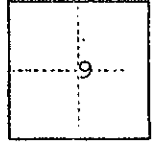


CORNER RECORD

COUNTY OF Madera T. 9 S. R. 17 E. M.D.B. & MERIDIAN CALIFORNIA

CORNER TYPE: GOV'T. CORNER MEANDER RANCHO CONTROL OTHER

CORNER IDENTIFICATION — DATE OF VISIT February 1975



Boundary Meander corner indicated on survey notes for Arthur Avillar in Section 8, T. 9 S., R. 17 E., dated March 15, 1946, in field book 184 at page 16, in the Madera County Engineers Office.

CORNER — LEFT AS FOUND FOUND AND TAGGED REESTABLISHED OBLITERATED CORNER REBUILT

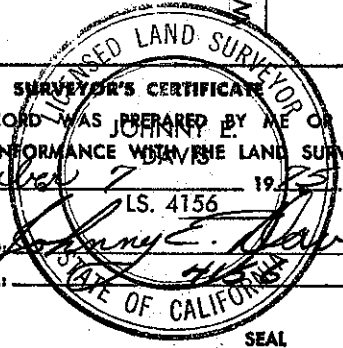
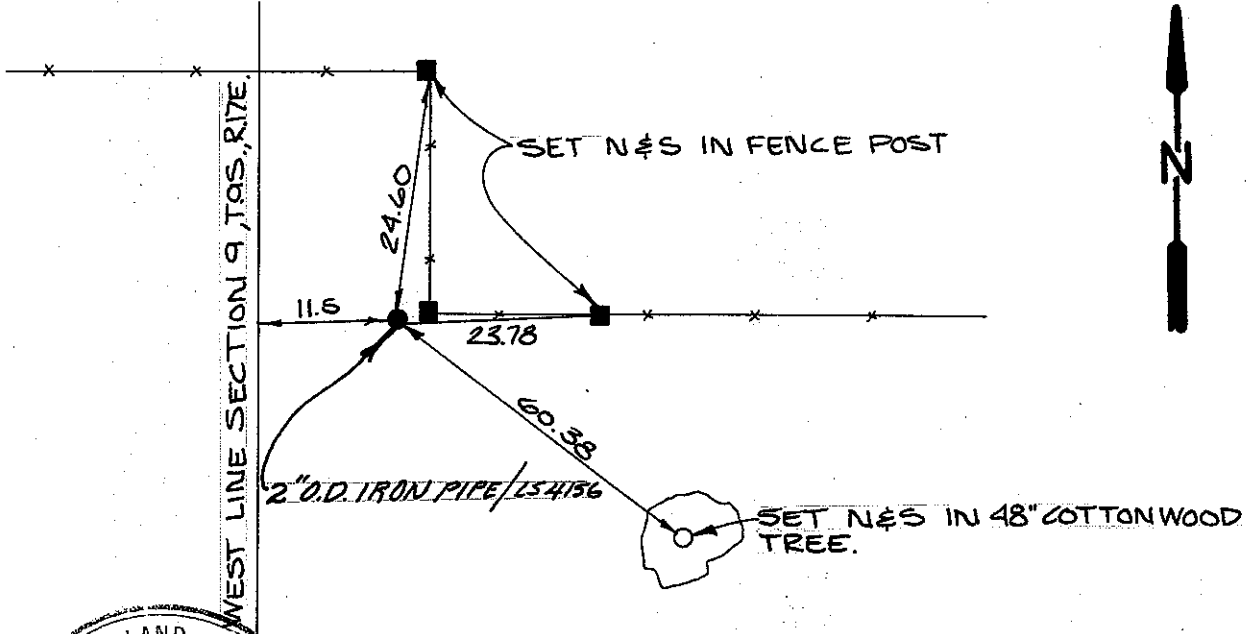
PHYSICAL DESCRIPTION OF CORNER FOUND; EVIDENCE AND METHOD USED TO IDENTIFY OR REESTABLISH

2" O.D. iron pipe at 0.75 feet Southwest of fence corner

PHYSICAL DESCRIPTION OF MONUMENTS REBUILT OR PERPETUATED

CALIFORNIA COORDINATE SYSTEM ORDER: FIRST SECOND THIRD
 STATIONS USED: NGS (USC & GS) STATE COUNTY OTHER STATION _____ STATION _____
 ZONE _____ ELEVATION _____ NORTHINGS (Y) _____ EASTINGS (X) _____

SKETCH: (Include reference tie or witness points, remarks and topo of area)



SURVEYOR'S CERTIFICATE
 THIS CORNER RECORD WAS PREPARED BY ME OR UNDER MY DIRECTION IN CONFORMANCE WITH THE LAND SURVEYORS ACT ON November 7 1975
 SIGNED: Johnny E. Davis
 L.S. or R.C.E. No.: LS. 4156

COUNTY SURVEYOR'S CERTIFICATE
 THE CORNER RECORD WAS RECEIVED 1-30 1976
 AND EXAMINED AND FILED 2-5 1976
 BY: A. Broto
 TITLE: County Engineer
 DOCUMENT No. 76-01-8

STATEMENT ON BACK OF SHEET

YES NO