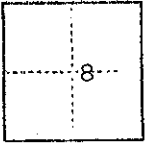


CORNER RECORD

COUNTY OF Madera T. 9 S. R. 17 E. M.D.B. & _____ MERIDIAN CALIFORNIA

CORNER TYPE: GOV'T. CORNER MEANDER RANCHO CONTROL OTHER

CORNER IDENTIFICATION — DATE OF VISIT February 19 75



Property corner: Northwest corner of Parcel No. 3 of Joint Tenancy Grant Deed recorded in Book 715 at Page 139, O.R.M.C.

CORNER — LEFT AS FOUND FOUND AND TAGGED REESTABLISHED OBLITERATED CORNER REBUILT

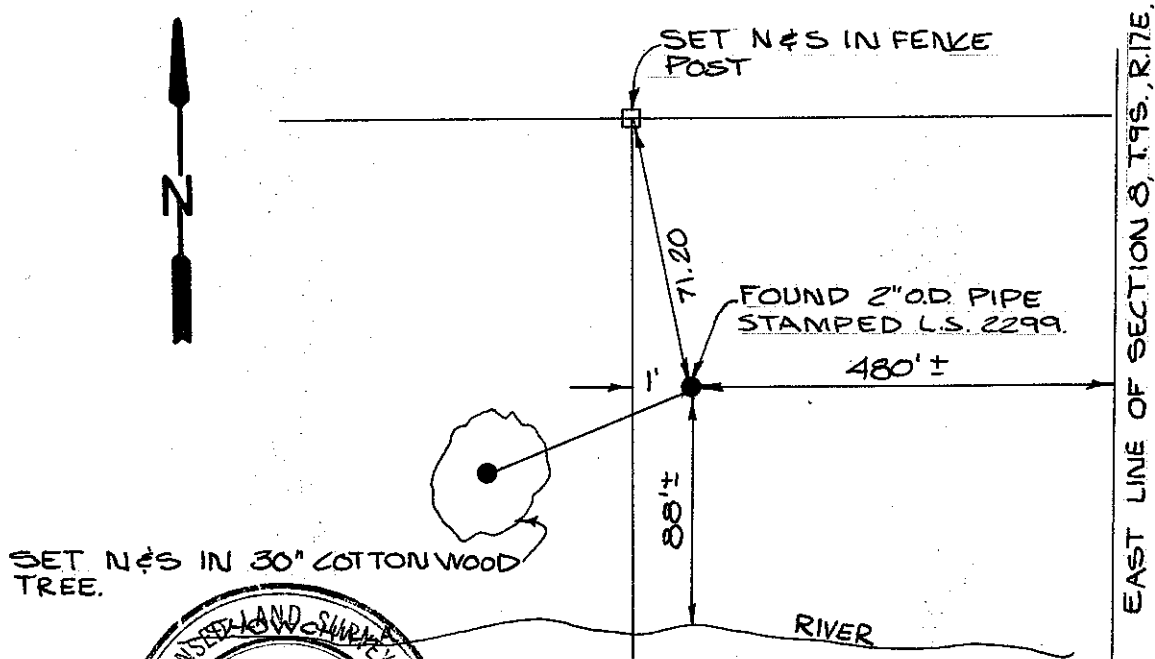
PHYSICAL DESCRIPTION OF CORNER FOUND; EVIDENCE AND METHOD USED TO IDENTIFY OR REESTABLISH

Found and accepted 2" O.D. iron pipe stamped L.S. 2299.

PHYSICAL DESCRIPTION OF MONUMENTS REBUILT OR PERPETUATED

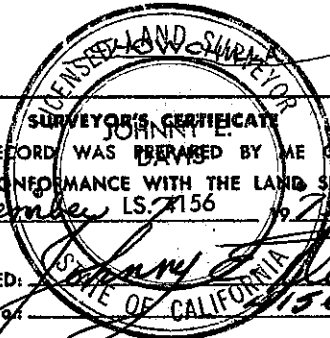
CALIFORNIA COORDINATE SYSTEM ORDER: FIRST SECOND THIRD
 STATIONS USED: NGS (USC & GS) STATE COUNTY OTHER STATION _____ STATION _____
 ZONE _____ ELEVATION _____ NORTHINGS (Y) _____ EASTINGS (X) _____

SKETCH: (Include reference tie or witness points, remarks and topo of area)



THIS CORNER RECORD WAS PREPARED BY ME OR UNDER MY DIRECTION IN CONFORMANCE WITH THE LAND SURVEYORS ACT ON November LS. 7156 19 75

SIGNED: Johnny E. Davis
 L.S. or R.C.E. No. 7156



SEAL

COUNTY SURVEYOR'S CERTIFICATE
 THE CORNER RECORD WAS RECEIVED 1-30 19 76
 AND EXAMINED AND FILED 2-5 19 76
 BY: A. Broto
 TITLE: County Engineer
 DOCUMENT No. 76-01-9

STATEMENT ON BACK OF SHEET

YES NO