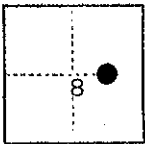


# CORNER RECORD

COUNTY OF Madera T. 9 S. R. 17 E. M.D.B. & MERIDIAN CALIFORNIA

CORNER TYPE: GOV'T. CORNER  MEANDER  RANCHO  CONTROL  OTHER

CORNER IDENTIFICATION — DATE OF VISIT February 19 75



1/16 Corner: Northwest corner of the Northeast quarter of the Southeast quarter of Section 8, T. 9 S., R. 17 E., M.D.B. & M.

CORNER — LEFT AS FOUND  FOUND AND TAGGED  REESTABLISHED OBLITERATED CORNER  REBUILT

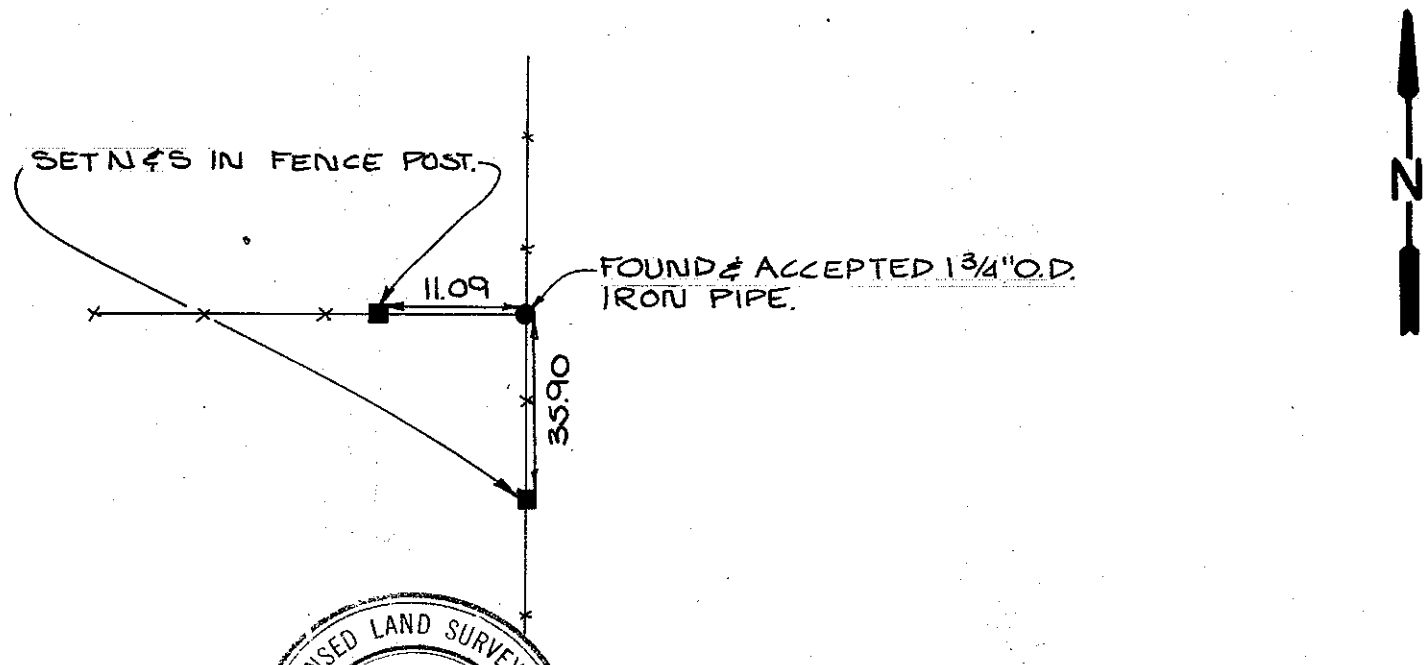
**PHYSICAL DESCRIPTION OF CORNER FOUND; EVIDENCE AND METHOD USED TO IDENTIFY OR REESTABLISH**

Found, accepted and tagged 1 3/4" O.D. iron pipe at the intersection North/South fence line with fence to West.

**PHYSICAL DESCRIPTION OF MONUMENTS REBUILT OR PERPETUATED**

CALIFORNIA COORDINATE SYSTEM ORDER: FIRST  SECOND  THIRD   
 STATIONS USED: NGS (USC & GS)  STATE  COUNTY  OTHER  STATION \_\_\_\_\_ STATION \_\_\_\_\_  
 ZONE \_\_\_\_\_ ELEVATION \_\_\_\_\_ NORTHINGS (Y) \_\_\_\_\_ EASTINGS (X) \_\_\_\_\_

**SKETCH: (Include reference tie or witness points, remarks and topo of area)**



**SURVEYOR'S CERTIFICATE**  
 THIS CORNER RECORD WAS PREPARED BY ME OR UNDER MY DIRECTION IN CONFORMANCE WITH THE LAND SURVEYORS ACT ON November 7 1975 L.S. 415619  
 SIGNED: Johnny E. Davis  
 L.S. or R.C.E. No. \_\_\_\_\_

**COUNTY SURVEYOR'S CERTIFICATE**  
 THE CORNER RECORD WAS RECEIVED 1-30 1976  
 AND EXAMINED AND FILED 2-5 1976  
 BY: A. Grote  
 TITLE: County Engineer  
 DOCUMENT No. 76-01-5  
 STATEMENT ON BACK OF SHEET YES  NO

SEAL