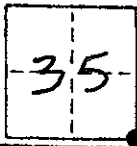


CORNER RECORD

COUNTY OF MADERA T. 9 S. R. 16 E. M.D.B.M. MERIDIAN CALIFORNIA

CORNER TYPE: GOV'T. CORNER MEANDER RANCHO CONTROL OTHER

CORNER IDENTIFICATION - DATE OF VISIT 11-10 1982



S.E. COR. LOT 496 FAIRMead colony #4
BK 3 OF MAPS, Pg 27 M.C.P.

CORNER - LEFT AS FOUND FOUND AND TAGGED REESTABLISHED OBLITERATED CORNER REBUILT

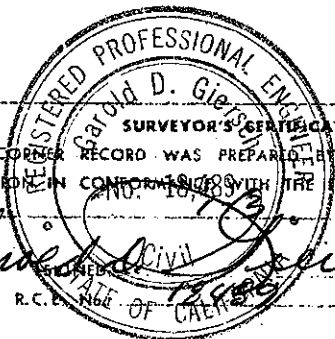
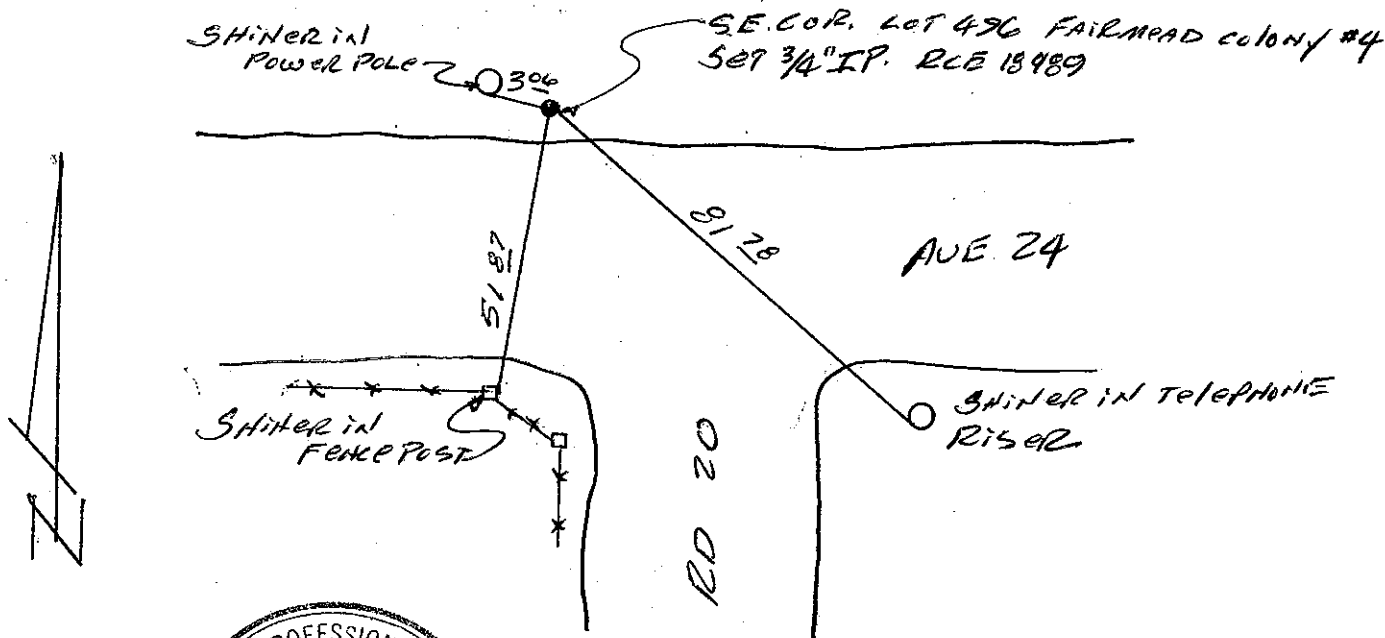
PHYSICAL DESCRIPTION OF CORNER FOUND; EVIDENCE AND METHOD USED TO IDENTIFY OR REESTABLISH

PHYSICAL DESCRIPTION OF MONUMENTS REBUILT OR PERPETUATED

SET 3/4" IRON PIPE TAGGED RCE 18489 AT RECORD DISTANCE FROM S.W. COR LOT 499 FAIRMead colony #4, ON LINE BETWEEN N.W. COR. LOT 4, FAIRMead colony, BK 2 OF MAPS, Pg. 52 M.C.P. AND N.E. COR. LOT 1, FAIRMead colony

CALIFORNIA COORDINATE SYSTEM ORDER: FIRST SECOND THIRD
STATIONS USED: NGS (USC & GS) STATE COUNTY OTHER STATION _____ STATION _____
ZONE _____ ELEVATION _____ NORTHINGS (Y) _____ EASTINGS (X) _____

SKETCH: (Include reference tie or witness points, remarks and topo of area)



THIS CORNER RECORD WAS PREPARED BY ME OR UNDER MY DIRECTION IN CONFORMANCE WITH THE LAND SURVEYORS ACT ON _____ 1983

David D. Gier
REGISTERED PROFESSIONAL ENGINEER
STATE OF CALIFORNIA

SEAL

COUNTY SURVEYOR'S CERTIFICATE

THE CORNER RECORD WAS RECEIVED _____ 19____ AND EXAMINED AND FILED BY *[Signature]* TITLE: _____

DOCUMENT No. _____

STATEMENT ON BACK OF SHEET

YES NO