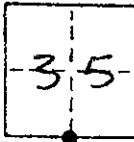


CORNER RECORD

COUNTY OF MADERA T. 9 S R. 16 E MERIDIAN CALIFORNIA
 CORNER TYPE: GOVT. CORNER MEANDER RANCHO CONTROL OTHER
 CORNER IDENTIFICATION — DATE OF VISIT 11-10 1982



S.E. COR. LOT 499 FAIRMead COLONY #4
 BK 3 OF MAPS, PG 27 M.C.R.

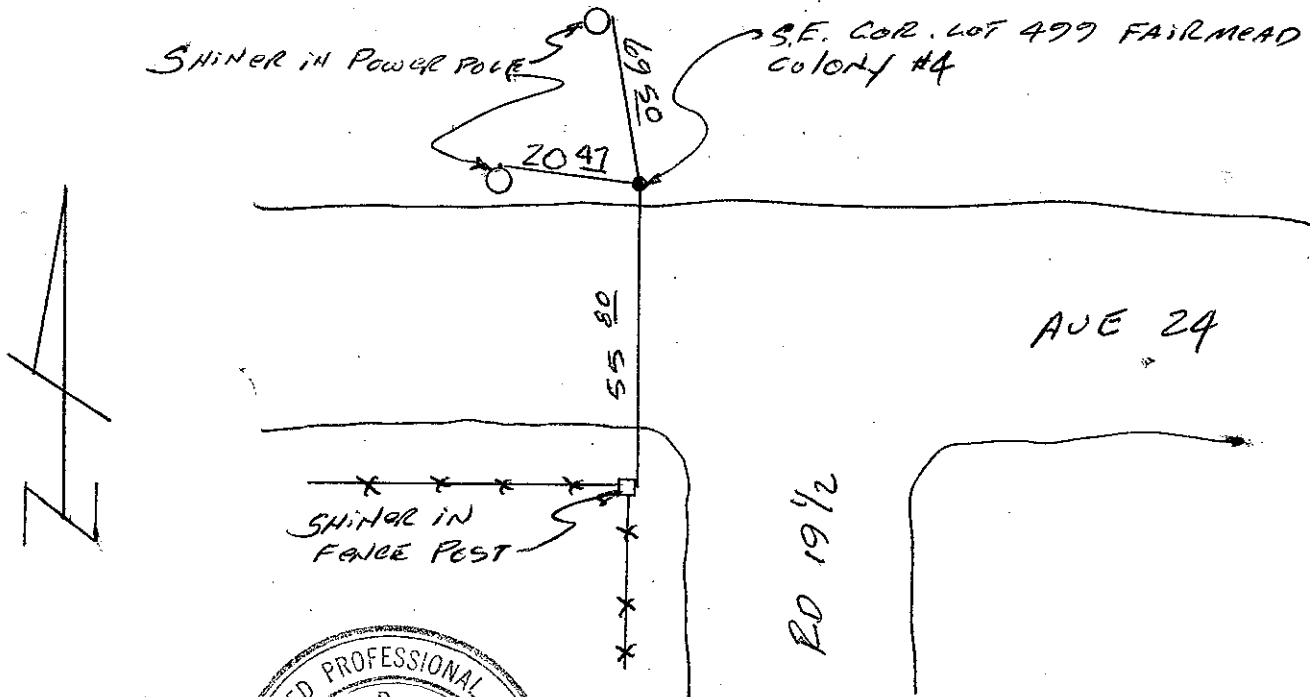
CORNER — LEFT AS FOUND FOUND AND TAGGED REESTABLISHED OBLITERATED CORNER RESULT

PHYSICAL DESCRIPTION OF CORNER FOUND; EVIDENCE AND METHOD USED TO IDENTIFY OR REESTABLISH
FD. NAIL PER PM #1883, REPLACED WITH 3/4" IP. TAGGED
RCE 18489

PHYSICAL DESCRIPTION OF MONUMENTS RESULT OR PERPETUATED

CALIFORNIA COORDINATE SYSTEM ORDER: FIRST SECOND THIRD
 STATIONS USED: NGS (USC & GS) STATE COUNTY OTHER STATION _____ STATION _____
 ZONE _____ ELEVATION _____ NORTHINGS (Y) _____ EASTINGS (X) _____

SKETCH: (Include reference tie or witness points, remarks and topo of area)



REGISTERED PROFESSIONAL SURVEYOR'S CERTIFICATE
 THIS CORNER RECORD WAS PREPARED BY ME OR UNDER MY DIRECTION IN CONFORMANCE WITH THE LAND SURVEYORS ACT
 ON NOV 18, 1982 AT 18,489

[Signature]
 STATE OF CALIFORNIA
 SEAL

COUNTY SURVEYOR'S CERTIFICATE
 THE CORNER RECORD WAS RECEIVED _____ 19____
 AND EXAMINED AND FILED _____ 19____
 BY *[Signature]*
 TITLE: _____

DOCUMENT No. _____
 STATEMENT ON BACK OF SHEET YES NO