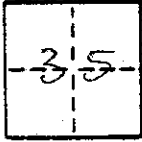


CORNER RECORD

COUNTY OF MADERA T. 9 R. 16 MOBE MERIDIAN CALIFORNIA
 CORNER TYPE: GOVT. CORNER MEANDER RANCHO CONTROL OTHER
 CORNER IDENTIFICATION - DATE OF VISIT 11-10 1982



N.E. COR. OF LOT 495
 FAIRMEAD COLONY #4

CORNER - LEFT AS FOUND FOUND AND TAGGED REESTABLISHED OBLITERATED CORNER RESULT

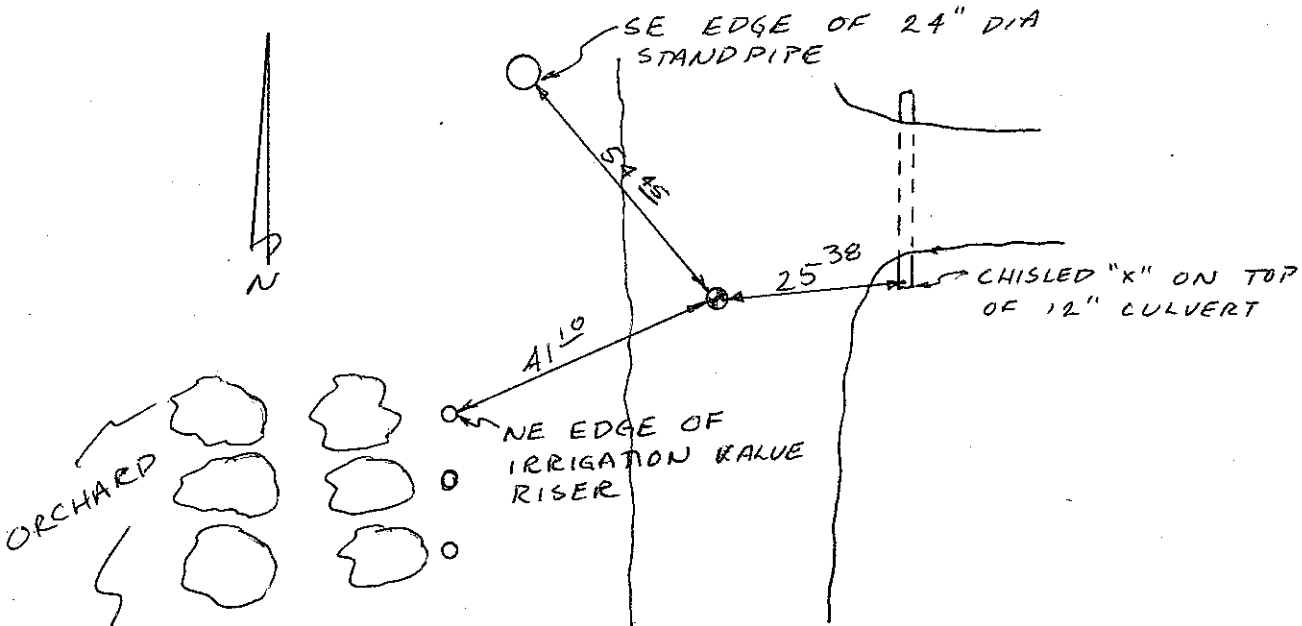
PHYSICAL DESCRIPTION OF CORNER FOUND; EVIDENCE AND METHOD USED TO IDENTIFY OR REESTABLISH

SET 3/4" IRON PIPE
 TAG RCE 18,489

PHYSICAL DESCRIPTION OF MONUMENTS RESULT OR PERPETUATED

CALIFORNIA COORDINATE SYSTEM ORDER: FIRST SECOND THIRD
 STATIONS USED: NGS (USC & GS) STATE COUNTY OTHER STATION _____ STATION _____
 ZONE _____ ELEVATION _____ NORTHINGS (N) _____ EASTINGS (E) _____

SKETCH: (Include reference tie or witness points, remarks and topo of area)



REGISTERED PROFESSIONAL SURVEYOR
 David D. Gies
 No. 19,502
 State of California

THIS CORNER RECORD WAS PREPARED BY ME OR UNDER MY DIRECTION IN CONFORMANCE WITH THE LAND SURVEYORS ACT ON _____
 SIGNED: _____
 L.S. or (R.C.E.) _____

COUNTY SURVEYOR'S CERTIFICATE

THE CORNER RECORD WAS RECEIVED Nov 17 1982
 AND EXAMINED AND FILED
 BY: James D. Johnson
 TITLE: County Surveyor

DOCUMENT No. _____
 STATEMENT ON BACK OF SHEET YES NO

SEAL