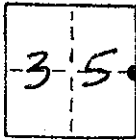


CORNER RECORD

COUNTY OF MADERA T. 9 S R. 16 E M D B 4 MERIDIAN CALIFORNIA
 CORNER TYPE: GOVT. CORNER MEANDER RANCHO CONTROL OTHER
 CORNER IDENTIFICATION -- DATE OF VISIT 11-10 1982



NE. COR. LOT 495 FAIRMead COLONY #4
 BK. 3 OF MAPS, PG 27 M.C.R.

CORNER -- LEFT AS FOUND FOUND AND TAGGED REESTABLISHED OBLITERATED CORNER REBUILT

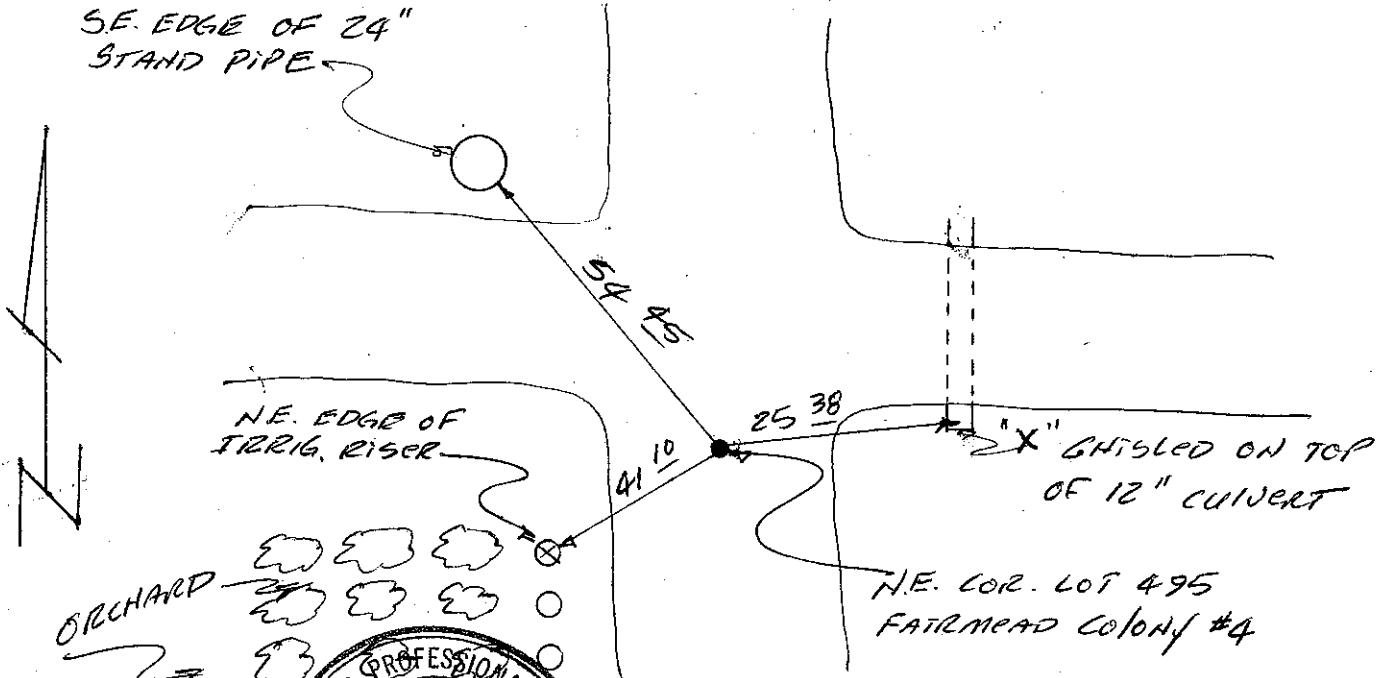
PHYSICAL DESCRIPTION OF CORNER FOUND; EVIDENCE AND METHOD USED TO IDENTIFY OR REESTABLISH

Set. 3/4" I.P. TAGGED R.C.E. 18489 BY SINGLE PROPORTION

PHYSICAL DESCRIPTION OF MONUMENTS REBUILT OR PERPETUATED

CALIFORNIA COORDINATE SYSTEM ORDER: FIRST SECOND THIRD
 STATIONS USED: NGS (USC & GS) STATE COUNTY OTHER STATION _____ STATION _____
 ZONE _____ ELEVATION _____ NORTHINGS (Y) _____ EASTINGS (X) _____

SKETCH: (Include reference tie or witness points, remarks and topo of area)



THIS CORNER RECORD WAS PREPARED BY ME OR UNDER MY DIRECTION IN CONFORMANCE WITH THE LAND SURVEYORS ACT ON _____ No. 18,489 _____

[Signature]
 of R.C.E. STATE OF CALIFORNIA



SEAL

COUNTY SURVEYOR'S CERTIFICATE

THE CORNER RECORD WAS RECEIVED _____ 19____ AND EXAMINED AND FILED _____ 19____

BY *[Signature]*
 TITLE: _____

DOCUMENT No. _____

STATEMENT ON BACK OF SHEET

YES NO