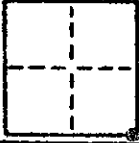


CORNER RECORD

COUNTY OF MADERA T. 9 S R. 16 E M.D.B. & M. MERIDIAN Madera CALIFORNIA

CORNER TYPE: GOV'T. CORNER MEANDER RANCHO CONTROL OTHER

CORNER IDENTIFICATION — DATE OF VISIT November 1974



S.E. Corner Section 34

CORNER — LEFT AS FOUND FOUND AND TAGGED REESTABLISHED OBLITERATED CORNER REBUILT

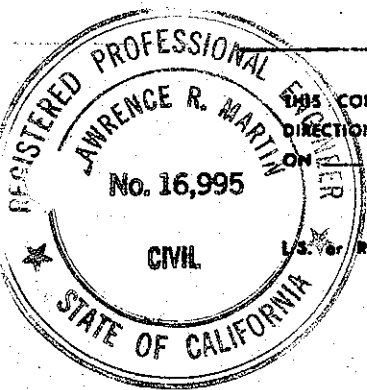
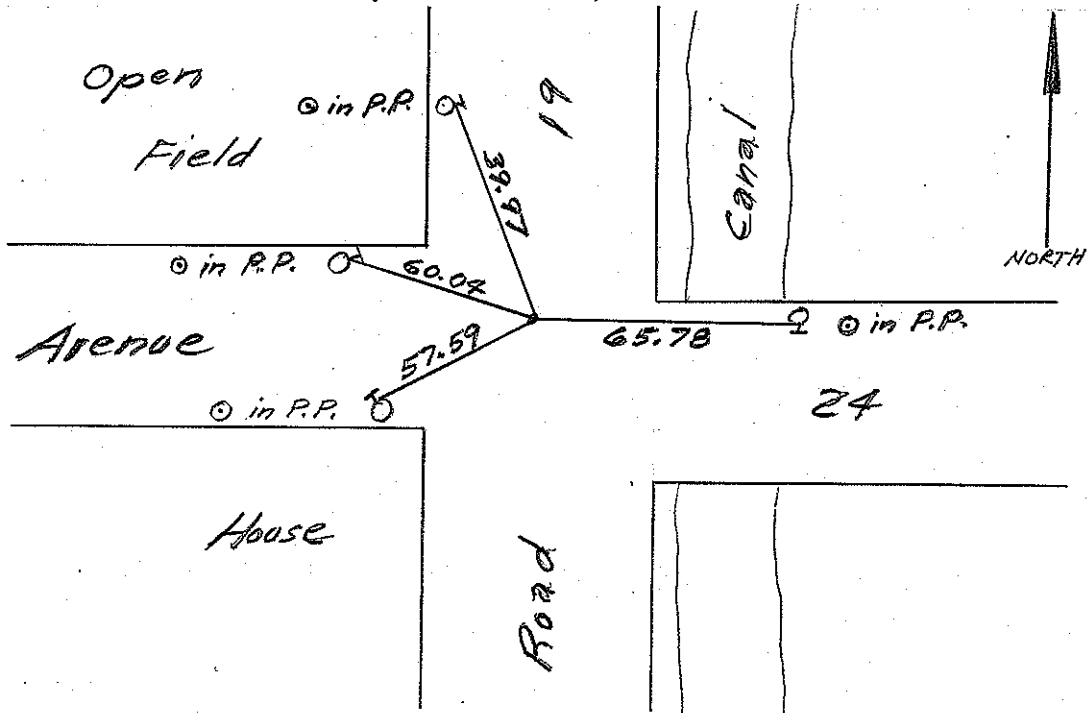
PHYSICAL DESCRIPTION OF CORNER FOUND; EVIDENCE AND METHOD USED TO IDENTIFY OR REESTABLISH

*Found 1 1/2" pipe with brass cap 1.0' down.
Brass cap stamped 34 | 35*

PHYSICAL DESCRIPTION OF MONUMENTS REBUILT OR PERPETUATED

CALIFORNIA COORDINATE SYSTEM ORDER: FIRST SECOND THIRD
 STATIONS USED: NGS (USC & GS) STATE COUNTY OTHER STATION _____ STATION _____
 ZONE _____ ELEVATION _____ NORTHINGS (Y) _____ EASTINGS (X) _____

SKETCH: (Include reference tie or witness points, remarks and topo of area)



SURVEYOR'S CERTIFICATE

THIS CORNER RECORD WAS PREPARED BY ME OR UNDER MY DIRECTION IN CONFORMANCE WITH THE LAND SURVEYORS ACT

ON Nov. 18, 1974

SIGNED: Lawrence R. Martin
 L.S. No. R.C.E. No. 16,995

SEAL

COUNTY SURVEYOR'S CERTIFICATE

THE CORNER RECORD WAS RECEIVED Nov. 23 1974
 AND EXAMINED AND FILED Dec 3 1974

BY: Albert O. Grote
 TITLE: County Engineer

DOCUMENT No. 74-30-1

STATEMENT ON BACK OF SHEET

YES NO