

CORNER RECORD

COUNTY OF MADERA T. 9 S R. 16 E M.D.B. & M MERIDIAN MADERA CALIFORNIA

CORNER TYPE: GOVT. CORNER MEANDER RANCHO CONTROL OTHER

CORNER IDENTIFICATION — DATE OF VISIT November 19 74



N.E. Corner Section 34

CORNER — LEFT AS FOUND FOUND AND TAGGED REESTABLISHED OBLITERATED CORNER REBUILT

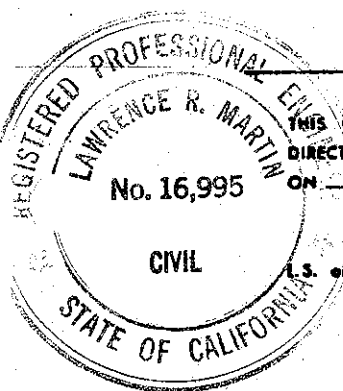
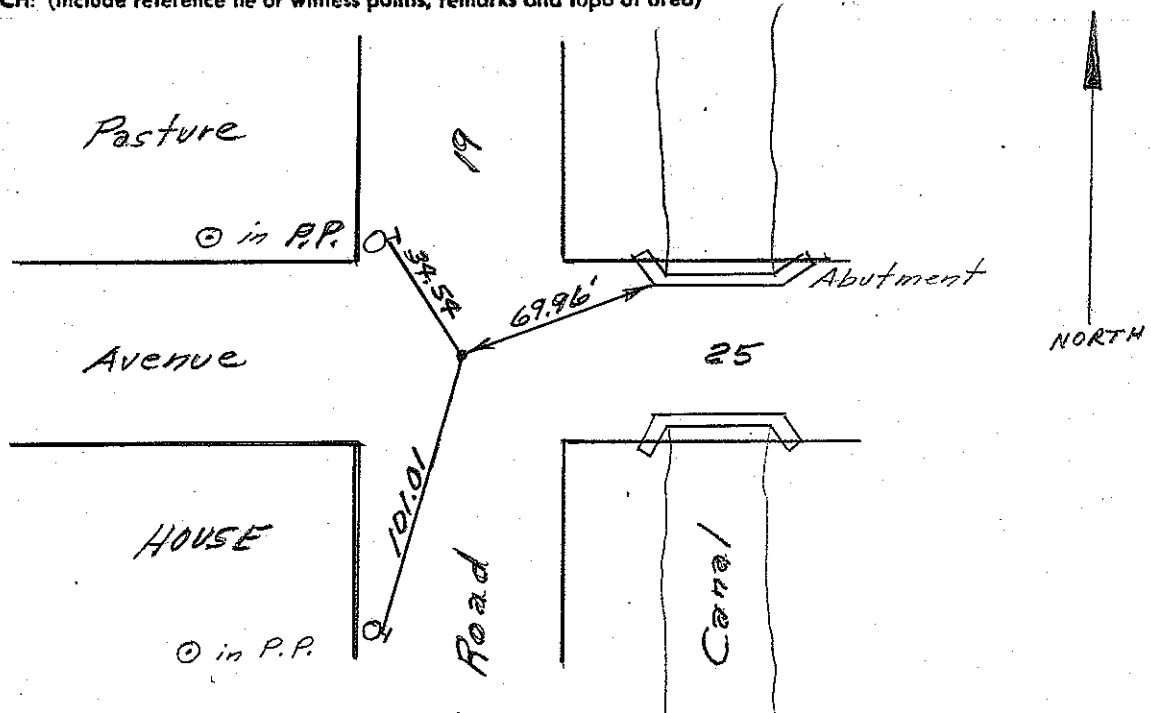
PHYSICAL DESCRIPTION OF CORNER FOUND; EVIDENCE AND METHOD USED TO IDENTIFY OR REESTABLISH

Found 1 1/2" iron pipe, .25' down, Tagged R.C.E. 16,995

PHYSICAL DESCRIPTION OF MONUMENTS REBUILT OR PERPETUATED

CALIFORNIA COORDINATE SYSTEM ORDER: FIRST SECOND THIRD
 STATIONS USED: NGS (USC & GS) STATE COUNTY OTHER STATION _____ STATION _____
 ZONE _____ ELEVATION _____ NORTHINGS (Y) _____ EASTINGS (X) _____

SKETCH: (Include reference tie or witness points, remarks and topo of area)



SURVEYOR'S CERTIFICATE

THIS CORNER RECORD WAS PREPARED BY ME OR UNDER MY DIRECTION IN CONFORMANCE WITH THE LAND SURVEYORS ACT ON Nov. 18 1974

SIGNED: Lawrence R. Martin
 P.S. or R.C.E. No. 16,995

SEAL

COUNTY SURVEYOR'S CERTIFICATE

THE CORNER RECORD WAS RECEIVED Nov. 23 1974 AND EXAMINED AND FILED Dec. 3 1974

BY Albert O. Grote
 TITLE: County Engineer
 DOCUMENT No. 74-30-3

STATEMENT ON BACK OF SHEET

YES NO