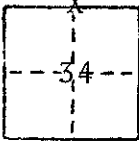


CORNER RECORD

COUNTY OF MADERA T. 9S R. 16E M.D.B. & M. (MADERA CALIFORNIA)
 CORNER TYPE: GOVT. CORNER MEANDER 2-2 RANCHO CONTROL OTHER
 CORNER IDENTIFICATION -- DATE OF VISIT 1977



N 1/4 CORNER SECTION 34 T9S, R16E M.D.B. & M.

CORNER -- LEFT AS FOUND FOUND AND TAGGED REESTABLISHED OBLITERATED CORNER RESULT

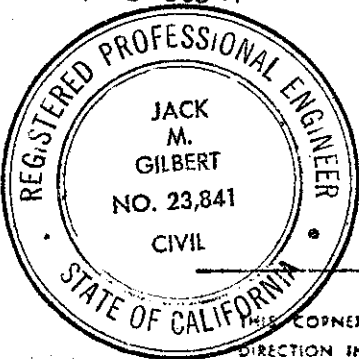
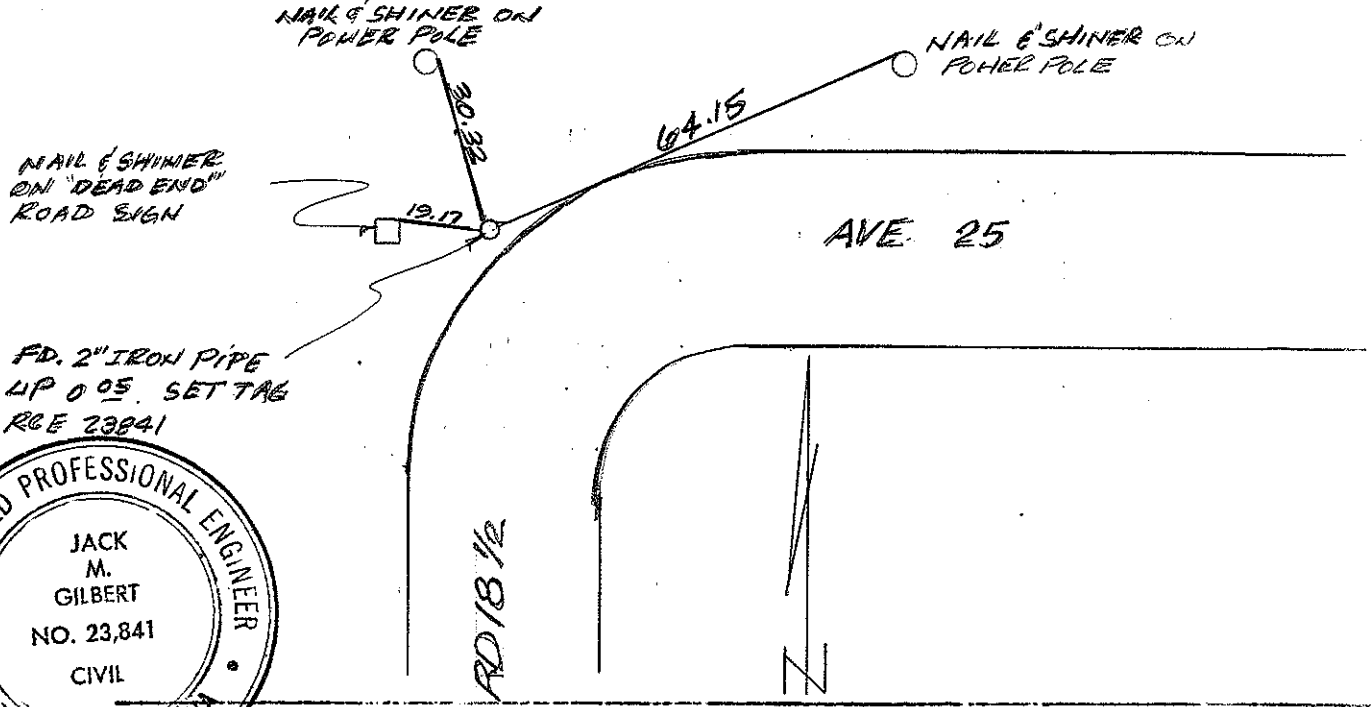
PHYSICAL DESCRIPTION OF CORNER FOUND; EVIDENCE AND METHOD USED TO IDENTIFY OR REESTABLISH

FOUND 2" IRON PIPE, SET TAG RCE 23841.

PHYSICAL DESCRIPTION OF MONUMENTS REBUILT OR PERPETUATED

CALIFORNIA COORDINATE SYSTEM ORDER. FIRST SECOND THIRD
 STATIONS USED: NGS (USC & GS) STATE COUNTY OTHER STATION _____ STATION _____
 ZONE _____ ELEVATION _____ NORTHINGS (Y) _____ EASTINGS (X) _____

SKETCH. (Include reference tie or witness points, remarks and topo of area)



SURVEYOR'S CERTIFICATE
 THIS CORNER RECORD WAS PREPARED BY ME OR UNDER MY DIRECTION IN CONFORMANCE WITH THE LAND SURVEYORS ACT ON 4-6-1977
 SIGNED Jack M. Gilbert
 L.S. or R.C.E. No. _____

COUNTY SURVEYOR'S CERTIFICATE
 THE CORNER RECORD WAS RECEIVED 4-7-1977 AND EXAMINED AND FILED May 2 1977
 BY A. Grote
 TITLE: Co. Eng.
 DOCUMENT No. 77-06-10

SEAL

STATEMENT ON BACK OF SHEET YES NO