

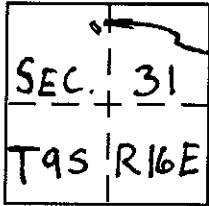
CORNER RECORD

Document Number _____

City of Chowchilla

County of Madera, California

Brief Legal Description Lot 9 of Block 188 of The Assessors Map of Blocks in the City of Chowchilla, recorded in Volume 5 of Maps, at Page 120, Madera County Records.



LOCATION OF PARCEL

CORNER TYPE

Government Corner Control
 Meander Property
 Rancho Other
 Date of Survey December 31, 2003

COORDINATES (Optional)

N. _____
 E. _____
 Zone _____ NAD27 NAD83
 NAD83 Epoch _____
 Elev. _____
 Vert. Datum: NGVD29 NAVD88
 Meas. Units: Metric Imperial

Corner - Left as found Found and tagged Established Reestablished Rebuilt

Identification and type of corner found: Evidence used to identify or procedure used to establish or reestablish the corner: Reestablished corners using standard proportionate measurement techniques. (See diagram on reverse side).

A description of the physical condition of the monument as found and as set or reset: Set 3/4" x 30" iron pipe with plastic tag, LS 4546, Flush, at the corners of Lot 9 of Block 188 of The Assessors Map of Block in the City of Chowchilla, recorded in Vol. 5 of Maps at Pg. 120, Madera County Records. (See diagram on reverse side).

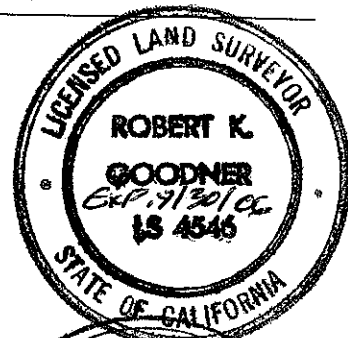
SURVEYOR'S STATEMENT

This Corner Record was prepared by me or under my direction in conformance with the Land Surveyors Act on 2/24/04
 Signed [Signature] P.L.S. or R.C.E. No. LS 4546

COUNTY SURVEYOR'S STATEMENT

This Corner Record was received 3/30/04
 and examined and filed 3/30/04
 Signed [Signature] P.L.S. or R.C.E. No. 6968
 Title ACTING CO. SURVEYOR

County Surveyor's Comment _____



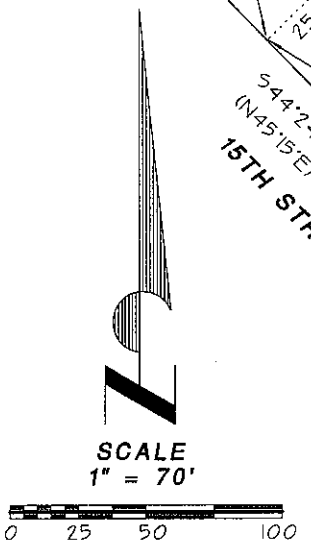
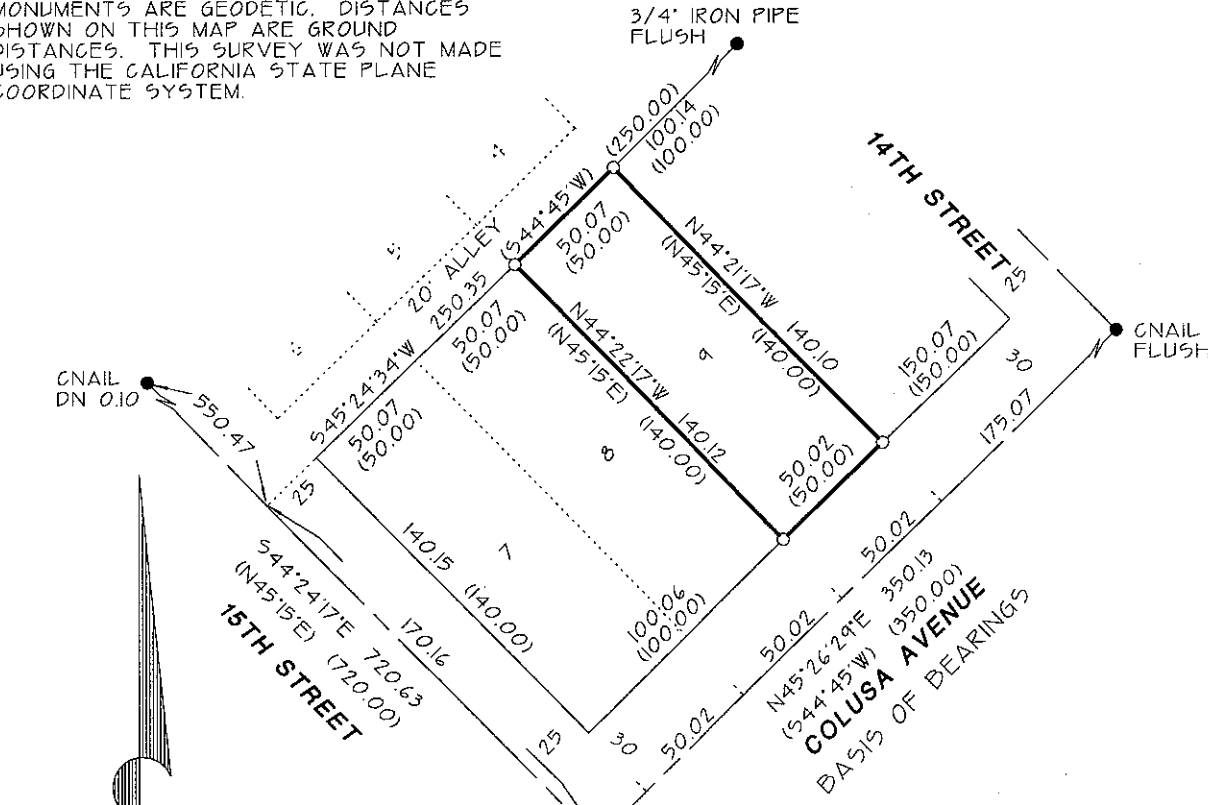
LOT 9
OF
BLOCK 188 OF THE ASSESSORS MAP OF BLOCKS
IN CITY OF CHOWCHILLA, RECORDED IN VOLUME 5
OF MAPS AT PAGE 120,
MADERA COUNTY RECORDS

GPS NOTE

THE WORLD GEODETIC SYSTEM OF 1984 (WG584) IS AN EARTH CENTERED-EARTH FIXED COORDINATE SYSTEM. DIRECTION IN THIS SYSTEM IS EQUIVALENT TO ASTRONOMIC DIRECTION, BUT NOT SUBJECT TO LOCAL GRAVITATIONAL ANOMALIES (DEFLECTION OF THE VERTICAL). IT IS THEREFORE A BETTER REPRESENTATION OF TRUE DIRECTION. THIS SURVEY WAS MADE USING THE GLOBAL POSITIONING SYSTEM (GPS) WHICH GATHERS DATA IN WG584. SINCE ALL FOUND MONUMENTS ON THIS SURVEY WERE LOCATED IN WG584, DIRECTIONS BETWEEN THESE MONUMENTS ARE GEODETIC. DISTANCES SHOWN ON THIS MAP ARE GROUND DISTANCES. THIS SURVEY WAS NOT MADE USING THE CALIFORNIA STATE PLANE COORDINATE SYSTEM.

BASIS OF BEARINGS

WG584 BEARING ALONG THE CENTERLINE OF COLUSA AVENUE BETWEEN FOUND MONUMENTS AT 14TH STREET AND 15TH STREET TAKEN AS N45°26'29"E (SEE GPS NOTE)



LEGEND

- INDICATES MONUMENT FOUND AND ACCEPTED AS NOTED
- INDICATES 3/4" IRON PIPE SET AT LOT CORNERS, TAGGED LS 4546, FLUSH
- (..) RECORD DATA, OR CALCULATED FROM RECORD DATA PER THE ASSESSORS MAP OF BLOCKS IN CITY OF CHOWCHILLA, VOL. 5 OF MAPS AT PG. 120, M.C.R.