

CORNER RECORD

Document Number _____

City of CHOWCHILLA

County of MADERA, California

Brief Legal Description LOTS IN THE CITY OF CHOWCHILLA, BK. 5 MAPS, PG. 120, M.C.R.

SEL.	30
T. 9S.	R. 16E.
M.D.	B. & M.

LOCATION OF PARCELS

CORNER TYPE

Government Corner Control
 Meander Property
 Rancho Other

Date of Survey NOVEMBER 15, 2005

COORDINATES (Optional)

N. _____
 E. _____
 Zone _____ NAD27 NAD83
 NAD83 Epoch _____
 Elev. _____
 Vert. Datum: NGVD29 NAVD88
 Meas. Units: Metric Imperial

Corner - Left as found Found and tagged Established Reestablished Rebuilt

Identification and type of corner found: Evidence used to identify or procedure used to establish or reestablish the corner:
REESTABLISHED CORNERS OF LOT 10 IN BLOCK 67 AND LOT 6 IN BLOCK 68 OF THE CITY OF CHOWCHILLA AS SHOW ON THE MAP RECORDED IN BOOK 5 OF MAPS AT PAGE 120, MADERA COUNTY RECORDS, USING STANDARD PROPORTIONATE MEASUREMENT TECHNIQUES (SEE DIAGRAM ON REVERSE)

A description of the physical condition of the monument as found and as set or reset: SET 3/4" x 30' IRON PIPE TAGGED LS 4546 FLUSH, OR AS NOTED ON THE DIAGRAM, AT THE ABOVE STATED CORNERS IN THE CITY OF CHOWCHILLA, BOOK 5 OF MAPS, PAGE 120, MADERA COUNTY RECORDS (DIAGRAM ON REVERSE)

SURVEYOR'S STATEMENT

This Corner Record was prepared by me or under my direction in conformance with the Land Surveyor's Act on 4/17/06

Signed [Signature] P.L.S. or R.C.E. No. LS 4546



COUNTY SURVEYOR'S STATEMENT

This Corner Record was received 4/19/06 and examined and filed 4/19/06

Signed [Signature] P.L.S. or R.C.E. No. 32951
 Title County Engineer / County Surveyor



County Surveyor's Comment _____

HUMBOLT AVENUE

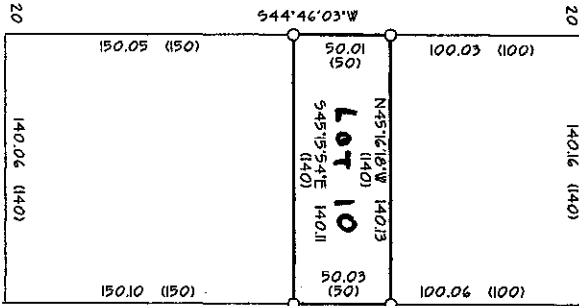
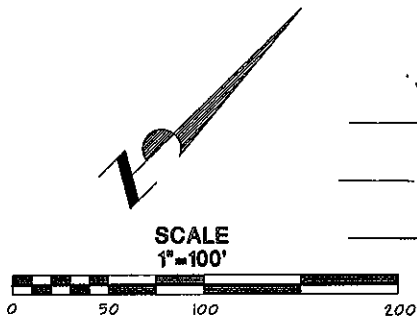
BASIS OF BEARINGS
 N44°45'00"E 719.90
 (N44°45'E) (720)

PKNAIL
FLUSH

GNAIL
DN 0.05

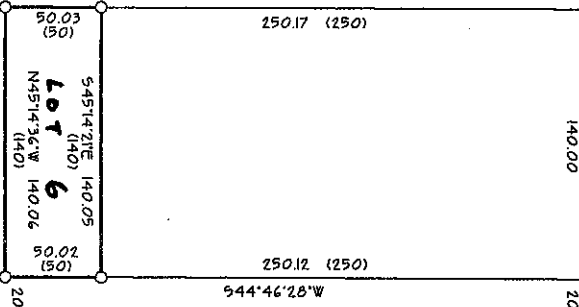
LEGEND

- FOUND MONUMENT AND ACCEPTED AS NOTED
 - SET 3/4" I.P. TAGGED LS 4546 FLUSH, OR AS NOTED
 - (...) RECORD DATA OR CALCULATED FROM RECORD DATA PER THE ASSESSOR'S MAP OF BLOCKS IN THE CITY OF CHOWCHILLA AS SHOWN IN BOOK 5 OF MAPS AT PAGE 120, MADERA COUNTY RECORDS
- POSITIONS NOT MONUMENTED ARE CALCULATED



ALAMEDA AVENUE

N44°47'10"E 360.22
 (N44°45'E) (360)



BASIS OF BEARINGS

BASIS OF BEARINGS IS THE CENTERLINE OF HUMBOLT AVENUE BETWEEN FOUND MONUMENTS AT THE CENTERLINE OF 4TH STREET AND 6TH STREET AS SHOWN IN BOOK 5 OF MAPS AT PAGE 120, MADERA COUNTY RECORDS. TAKEN AS N44°45'E

3/4" I.P.
 LS 4403 100.02
 UP 0.20 (100)

N44°45'44"E 460.10
 (N44°45'E) (460)

COLUSA AVENUE

GNAIL
FLUSH

545°17'02"E 360.33
 (N45°15'W) (360)

4TH STREET

NAIL &
SHINER
FLUSH

545°13'04"E 359.99
 (N45°15'W) (360)

545°14'35"E 720.24
 (N45°15'W) (720)

5TH STREET

