

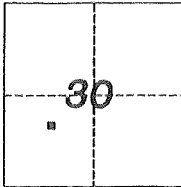
# CORNER RECORD

Agency Index \_\_\_\_\_

Document Number \_\_\_\_\_

City of CHOWCHILLA County of MADERA, California

Brief Legal Description LOTS 8 & 9, BLOCK 134, BOOK 5 OF MAPS, PAGE 119, MADERA COUNTY RECORDS



T9S/R16E  
M.D.B.M.

### CORNER TYPE

Government Corner  Control   
 Meander  Property   
 Rancho  Other

Date of Survey DECEMBER 3, 2021

### COORDINATES (Optional)

N. \_\_\_\_\_ E. \_\_\_\_\_

Elevation \_\_\_\_\_

Units  Metric  U.S. Survey Foot

Horizontal Datum \_\_\_\_\_

Zone \_\_\_\_\_ Epoch Date \_\_\_\_\_

Vertical Datum \_\_\_\_\_

Complies with Public Resources Code §§8801-8819

Complies with Public Resources Code §§8890-8902

PLS Act Ref.:  8765(d)  8771  8773  Other:

Corner/Monument:  Left as found  Established  Rebuilt  Pre-Construction

Found and tagged  Reestablished  Referenced  Post-Construction

Narrative of corner identified and monument as found, set, reset, replaced, or removed:

See sheet #2 for description(s):

NO MONUMENTS WERE FOUND WITHIN OR AROUND BLOCK 134. CURB SPLITS DETERMINED CENTER LINES OF RIGHT-OF-WAYS. BLOCK AND LOTS ARE PRORATED IN FROM CENTER LINES. EXISTING FENCE LOCATIONS FOR LOTS 7 THROUGH 12 ARE IN SUBSTANTIAL AGREEMENT WITH THESE CALCULATED LOT LINES.



### SURVEYOR'S STATEMENT

This Corner Record was prepared by me or under my direction in conformance with

the Professional Land Surveyors' Act on JANUARY 20, 2022

Signed Richard C. Shepard P.L.S. or R.C.E. No. 6218

### COUNTY SURVEYOR'S STATEMENT

This Corner Record was received 1/25/2022

and examined and filed 1/25/2022

Signed Peter Rei P.L.S. or R.C.E. No. 5963

Title Acting County Surveyor

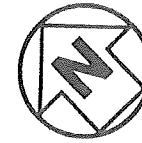
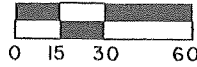
County Surveyor's Comment



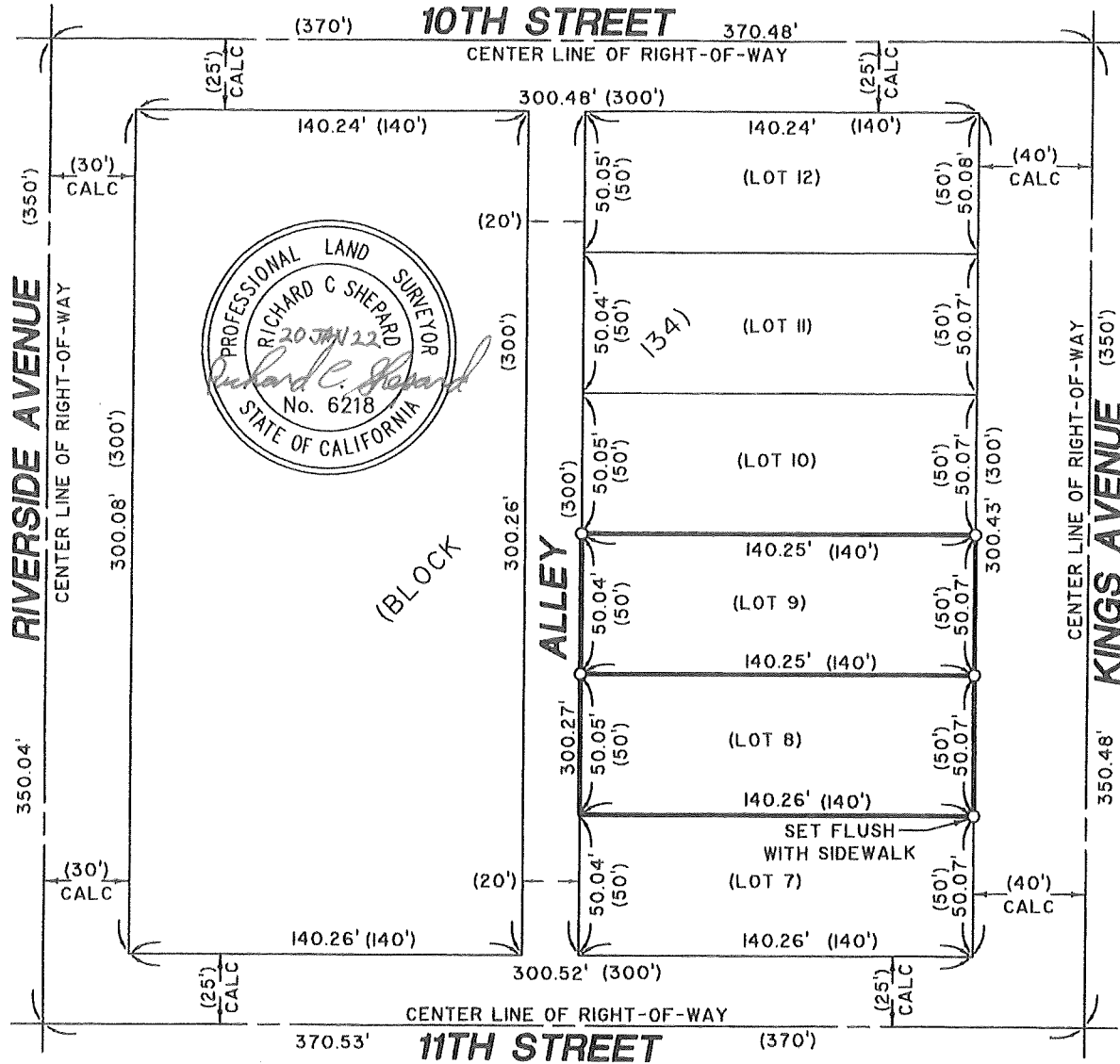
**LEGEND**

- SET .75" x 30" IRON PIPE, DOWN 6",  
CAPPED LS 621B, UNLESS NOTED  
OTHERWISE

SCALE: 1" = 60'



( )  
ASSESSOR'S MAP OF BLOCKS IN THE  
CITY OF CHOWCHILLA, BOOK 5 OF  
MAPS, PAGE 119, MADERA COUNTY  
RECORDS



**NOTES**

- ROAD ALIGNMENTS ARE CENTERLINE OF RIGHT-OF-WAY
- ROAD CENTERLINES WERE CALCULATED BY MEANS OF SPLITTING EXISTING CURB LINES. LOT PROPERTY LINES WERE VERIFIED BY LINES OF OCCUPATION.
- DISTANCES NOT MONUMENTED HAVE BEEN CALCULATED

**BEDROCK ENGINEERING**  
A solid foundation for your next project  
Land Surveying • Civil Engineering • Utility Locating

P.O. Box 25783  
Fresno, CA 93729  
voice: 559.645.4849  
fax: 559.645.4869  
www.bedrockeng.com  
21-6218