

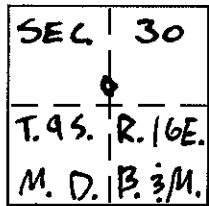
# CORNER RECORD

Document Number \_\_\_\_\_

City of CHOWCHILLA

County of MADERA, California

Brief Legal Description LOT 4, BLK. 86, CITY OF CHOWCHILLA, BK. 3 MAPS, PG. 20, M.C.R.



### CORNER TYPE

Government Corner  Control   
 Meander  Property   
 Rancho  Other   
 Date of Survey FEBRUARY 10, 2006

### COORDINATES (Optional)

N. \_\_\_\_\_  
 E. \_\_\_\_\_  
 Zone \_\_\_\_\_ NAD27  NAD83   
 NAD83 Epoch \_\_\_\_\_  
 Elev. \_\_\_\_\_  
 Vert. Datum: NGVD29  NAVD88   
 Meas. Units: Metric  Imperial

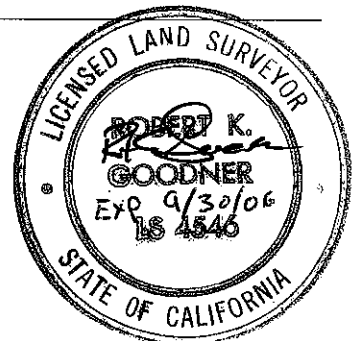
Corner - Left as found  Found and tagged  Established  Reestablished  Rebuilt

Identification and type of corner found: Evidence used to identify or procedure used to establish or reestablish the corner: REESTABLISHED THE NLY, SLY, ELY, AND WLY CORNERS OF LOT 4, BLOCK 86 OF THE MAP OF THE CITY OF CHOWCHILLA AS SHOWN IN BOOK 3 OF MAPS AT PAGE 20, MADERA COUNTY RECORDS, USING STANDARD PROPORTIONATE MEASUREMENT TECHNIQUES. (SEE DIAGRAM ON REVERSE.)

A description of the physical condition of the monument as found and as set or reset: SET 3/4"x 30" IRON PIPE TAGGED LS 4546, OR AS NOTED ON THE DIAGRAM, AT THE ABOVE STATED CORNERS AS SHOWN ON THE MAP RECORDED IN BOOK 3 OF MAPS AT PAGE 20, MADERA COUNTY RECORDS (SEE DIAGRAM ON REVERSE.)

### SURVEYOR'S STATEMENT

This Corner Record was prepared by me or under my direction in conformance with the Land Surveyor's Act on 3/22/06  
 Signed [Signature] P.L.S. or R.C.E. No. 4546



### COUNTY SURVEYOR'S STATEMENT

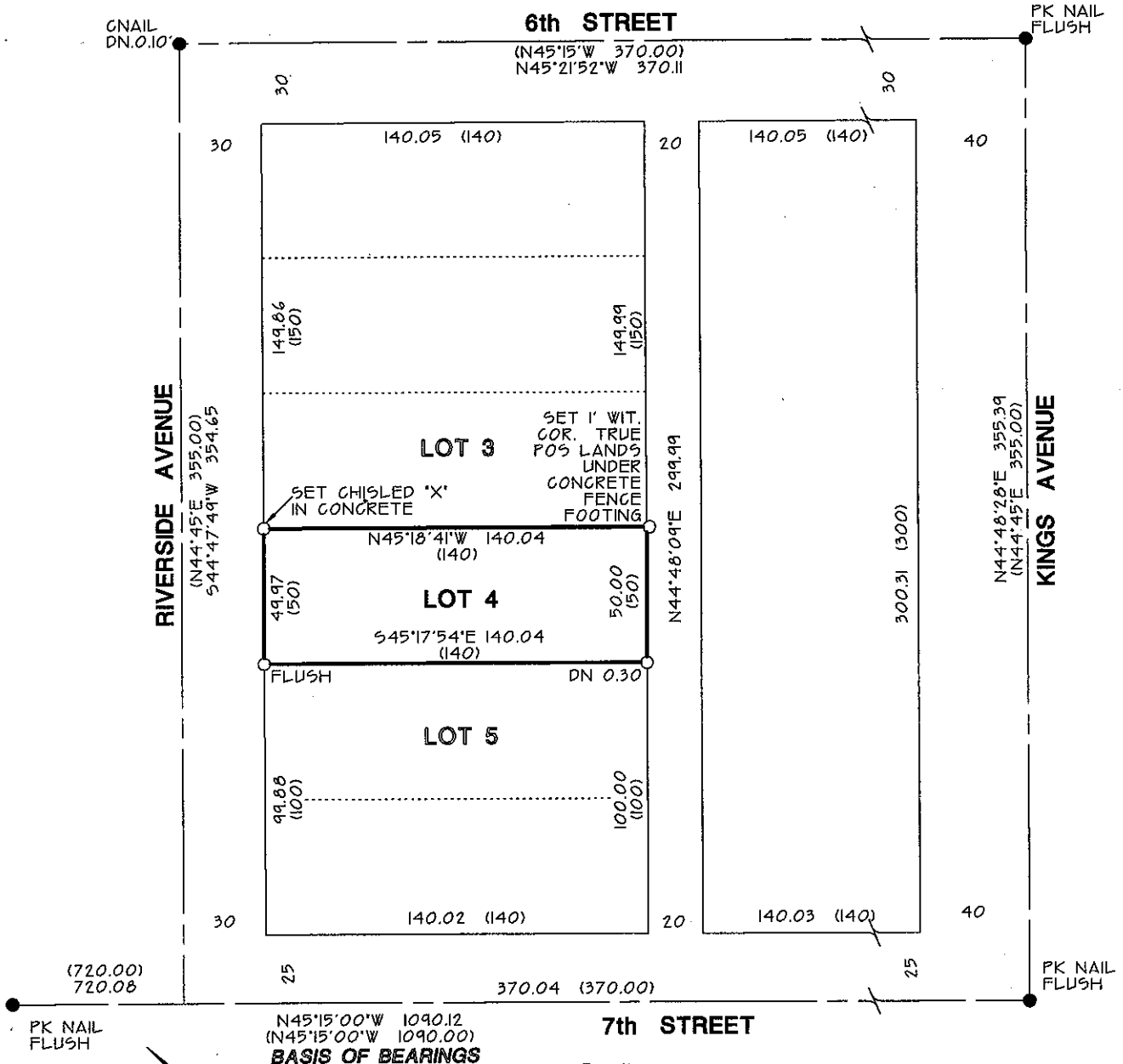
This Corner Record was received 3/29/06  
 and examined and filed 3/29/06  
 Signed [Signature] P.L.S. or R.C.E. No. 32951  
 Title County Surveyor



County Surveyor's Comment \_\_\_\_\_

**BASIS OF BEARINGS**

BASIS OF BEARINGS IS THE CENTERLINE OF 7TH STREET BETWEEN FOUND MONUMENTS AT THE CENTERLINES OF KINGS AVENUE AND MONTEREY AVANUE AS SHOWN ON THE MAP RECORDED IN BOOKS OF MAPS AT PAGE 20, MADERA COUNTY RECORDS TAKEN AS N45°15'00"W



**LEGEND**

- MONUMENT FOUND AND ACCEPTED AS NOTED
  - SET 3/4" I.P. TAGGED L54546 OR AS NOTED
  - (...) RECORD DATA OR CALCULATED FROM RECORD DATA PER THE MAP OF THE CITY OF CHOWCHILLA AS SHOWN IN BK. 3 OF MAPS AT PG. 20, MADERA COUNTY RECORDS
- POSITIONS NOT MONUMENTED ARE CALCULATED

**SCALE**  
 1"=60'

