

CORNER RECORD

Document Number _____

City of CHOWCHILLA

County of MADERA, California

Brief Legal Description LOT 4, BLK. 86, CITY OF CHOWCHILLA, BK. 3 MAPS, PG. 20, M.C.R.

SEC. 30	LOCATION
T. 9S. R. 16E.	OF
M. D. B. 3M.	PARCEL

CORNER TYPE

Government Corner Control

Meander Property

Rancho Other

Date of Survey FEBRUARY 10 2006

COORDINATES (Optional)

N. _____

E. _____

Zone _____ NAD27 NAD83

NAD83 Epoch _____

Elev. _____

Vert. Datum: NGVD29 NAVD88

Meas. Units: Metric Imperial

Corner - Left as found Found and tagged Established Reestablished Rebuilt

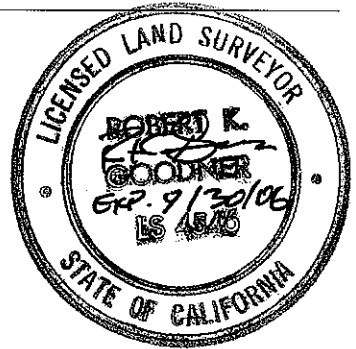
Identification and type of corner found: Evidence used to identify or procedure used to establish or reestablish the corner: REESTABLISHED THE NLY, SLY, ELY, AND WLY CORNERS OF LOT 4, BLOCK 86 OF THE MAP OF THE CITY OF CHOWCHILLA AS SHOWN IN BOOK 3 OF MAPS AT PAGE 20, MADERA COUNTY RECORDS, USING STANDARD PROPORTIONATE MEASUREMENT TECHNIQUES. (SEE DIAGRAM ON REVERSE.)

A description of the physical condition of the monument as found and as set or reset: SET 3/4"x 30" IRON PIPE TAGGED LS 4546, OR AS NOTED ON THE DIAGRAM, AT THE ABOVE STATED CORNERS AS SHOWN ON THE MAP RECORDED IN BOOK 3 OF MAPS AT PAGE 20, MADERA COUNTY RECORDS (SEE DIAGRAM ON REVERSE.)

SURVEYOR'S STATEMENT

This Corner Record was prepared by me or under my direction in conformance with the Land Surveyor's Act on 4/25/06

Signed [Signature] P.L.S. or R.C.E. No. 4546



COUNTY SURVEYOR'S STATEMENT

This Corner Record was received 5/24/06

and examined and filed 5/24/06

Signed [Signature] P.L.S. or R.C.E. No. 32951

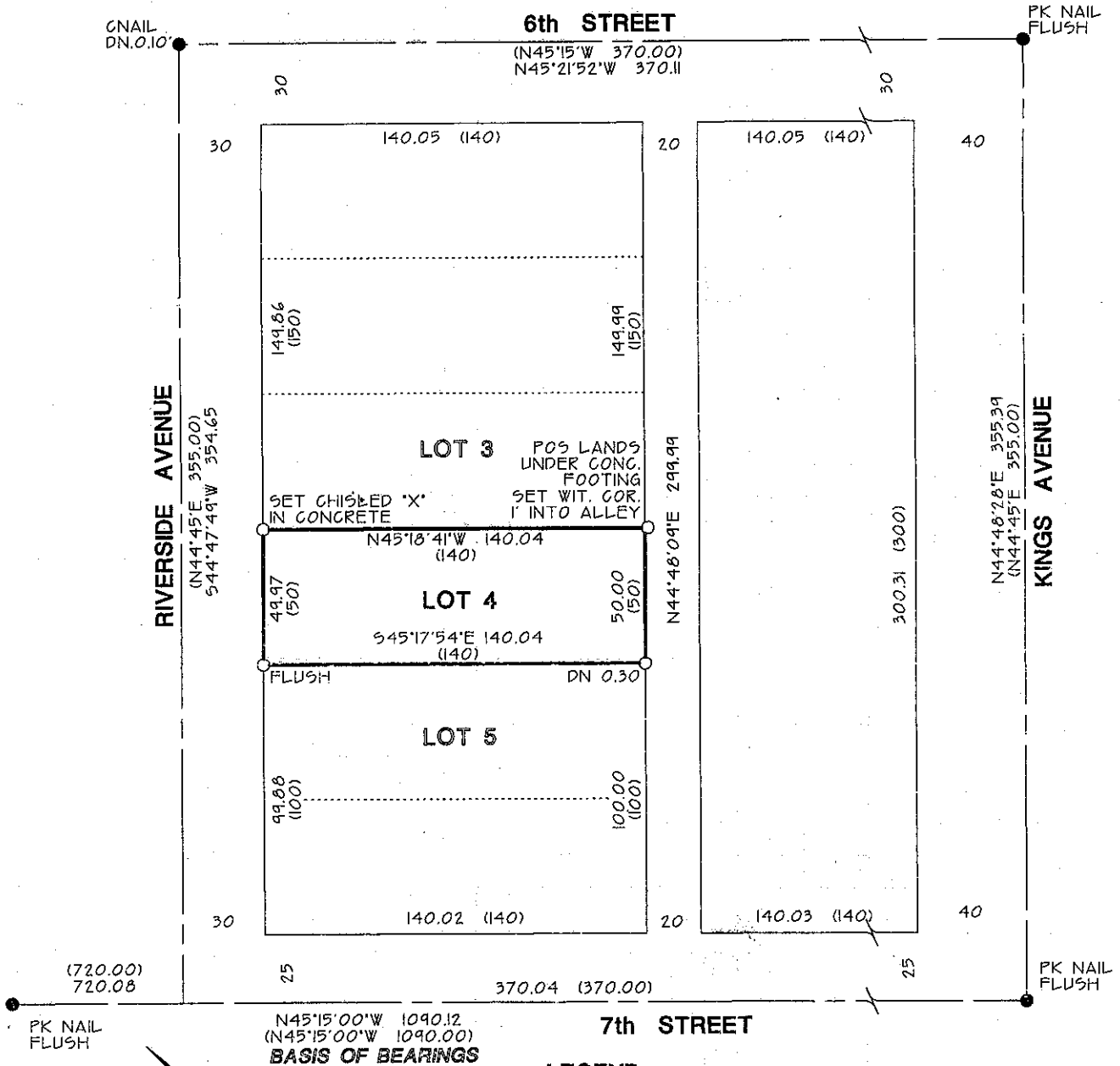
Title County Surveyor



County Surveyor's Comment _____

BASIS OF BEARINGS

BASIS OF BEARINGS IS THE CENTERLINE OF 7TH STREET BETWEEN FOUND MONUMENTS AT THE CENTERLINES OF KINGS AVENUE AND MONTEREY AVENUE AS SHOWN ON THE MAP RECORDED IN BOOK 3 OF MAPS AT PAGE 20, MADERA COUNTY RECORDS TAKEN AS N45°15'00"W



LEGEND

- MONUMENT FOUND AND ACCEPTED AS NOTED
- SET 3/4" I.P. TAGGED L54546 OR AS NOTED
- (...) RECORD DATA OR CALCULATED FROM RECORD DATA PER THE MAP OF THE CITY OF CHOWCHILLA AS SHOWN IN BK. 3 OF MAPS AT PG. 20, MADERA COUNTY RECORDS
- POSITIONS NOT MONUMENTED ARE CALCULATED

SCALE
 1"=60'

