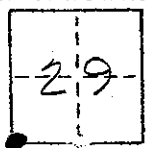


CORNER RECORD

COUNTY OF MADERA T. 9S R. 16E MDB&M MERIDIAN CALIFOR: _____
 CORNER TYPE: GOVT. CORNER MEANDER RANCHO CONTROL OTHER
 CORNER IDENTIFICATION — DATE OF VISIT MARCH 19 75



WEST
 South ~~SW~~ Corner of Sec. 29, T9S, R16E.

CORNER — LEFT AS FOUND FOUND AND TAGGED REESTABLISHED OBLITERATED CORNER REBUILT

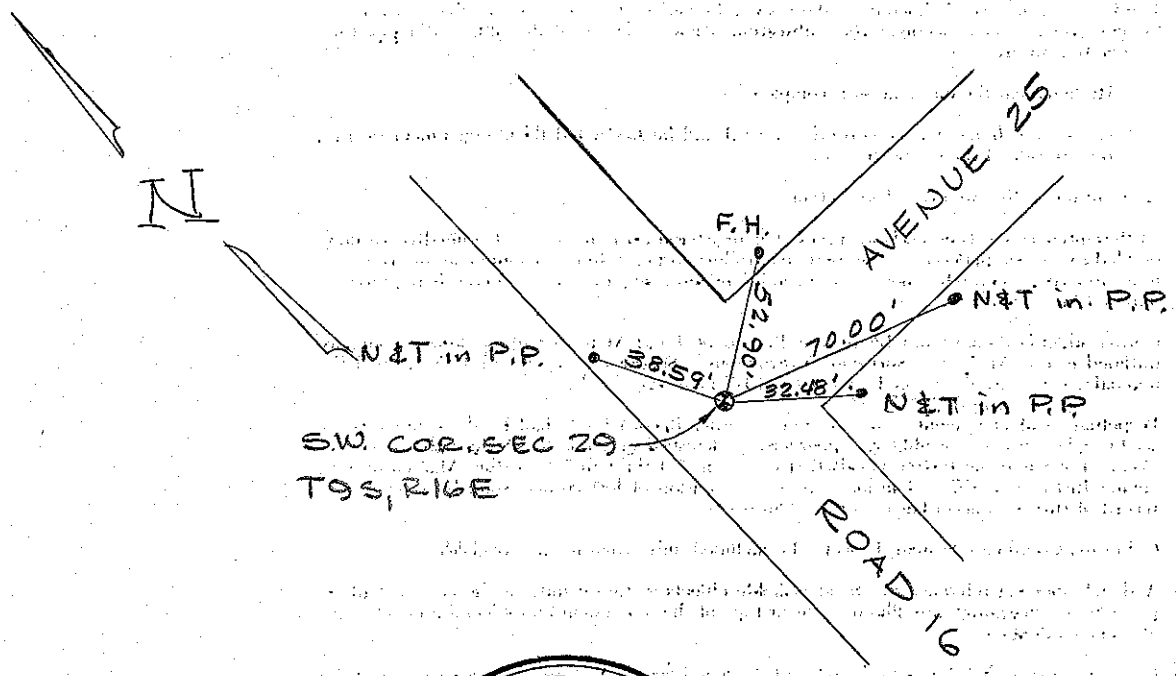
PHYSICAL DESCRIPTION OF CORNER FOUND; EVIDENCE AND METHOD USED TO IDENTIFY OR REESTABLISH

Found 2" Brass Cap set in concrete.

PHYSICAL DESCRIPTION OF MONUMENTS REBUILT OR PERPETUATED

CALIFORNIA COORDINATE SYSTEM ORDER: FIRST SECOND THIRD
 STATIONS USED: NGS (USC & GS) STATE COUNTY OTHER STATION _____ STATION _____
 ZONE _____ ELEVATION _____ NORTHINGS (?) _____ EASTINGS (?) _____

SKETCH: (Include reference tie or witness points, remarks and topo of area)



SURVEYOR'S CERTIFICATE
 THIS CORNER RECORD WAS PREPARED BY ME OR UNDER MY DIRECTION IN CONFORMANCE WITH THE LAND SURVEYORS ACT ON March 19 75 AT GILBERT
 SIGNED: Jack Gilbert
 L.S. or R.C.E. No. NO. 23841
 CIVIL
 STATE OF CALIFORNIA

COUNTY SURVEYOR'S CERTIFICATE
 THE CORNER RECORD WAS RECEIVED _____ 19 _____ AND EXAMINED AND FILED May 11 19 75 BY A. O. Grote TITLE: County Engineer
 DOCUMENT No. 75-12-2
 STATEMENT ON BACK OF SHEET YES NO