

CORNER RECORD

COUNTY OF MADERA T. 9S R. 16E MDB&M MERIDIAN CALIFOR: _____
 CORNER TYPE: GOVT. CORNER MEANDER RANCHO CONTROL OTHER
 CORNER IDENTIFICATION — DATE OF VISIT March 19 75



, South ^{1/4} Corner of Section 29, T9S, R16E

CORNER — LEFT AS FOUND FOUND AND TAGGED REESTABLISHED OBLITERATED CORNER REBUILT

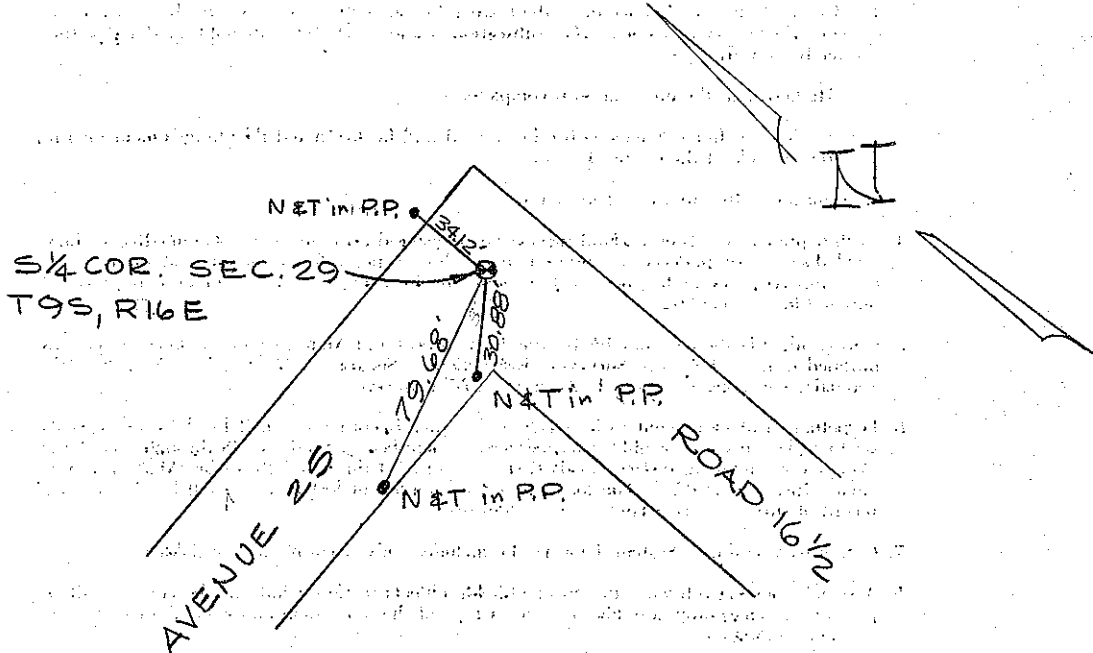
PHYSICAL DESCRIPTION OF CORNER FOUND; EVIDENCE AND METHOD USED TO IDENTIFY OR REESTABLISH

PHYSICAL DESCRIPTION OF MONUMENTS REBUILT OR PERPETUATED

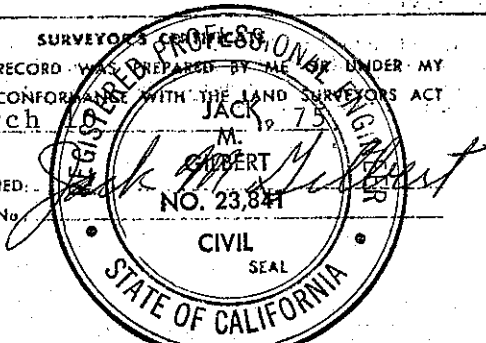
Set 3/4" I.P., Tagged R.C.E. 23,841

CALIFORNIA COORDINATE SYSTEM ORDER: FIRST SECOND THIRD
 STATIONS USED: NGS (USC & GS) STATE COUNTY OTHER STATION _____ STATION _____
 ZONE _____ ELEVATION _____ NORTHINGS (Y) _____ EASTINGS (X) _____

SKETCH: (Include reference tie or witness points, remarks and topo of area)



SURVEYOR'S PROFESSIONAL ENGINEER
 THIS CORNER RECORD WAS PREPARED BY ME OR UNDER MY DIRECTION IN CONFORMANCE WITH THE LAND SURVEYORS ACT ON March 19 75
 SIGNED: JACK M. GIBERT
 I.S. or R.C.E. No. NO. 23,841



COUNTY SURVEYOR'S CERTIFICATE
 THE CORNER RECORD WAS RECEIVED 3/10 1975
 AND EXAMINED AND FILED Mar 11 1975
 BY: A. O. Krote
 TITLE: County Engineer
 DOCUMENT No. 75-12-1
 STATEMENT ON BACK OF SHEET YES NO