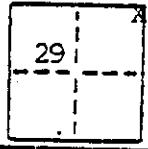


CORNER RECORD

COUNTY OF MADERA T. 9 S. R. 16 E. M.D.B. & MERIDIAN

CORNER TYPE: GOVT. CORNER MEANDER RANCHO CONTROL OTHER

CORNER IDENTIFICATION - DATE OF VISIT Aug 16 19 90



NE Cor section 29T.9S. R.16E.

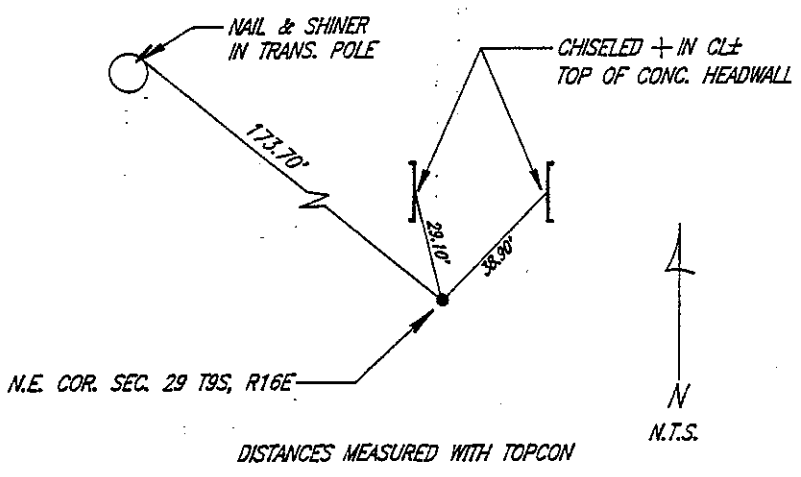
CORNER - LEFT AS FOUND FOUND AND TAGGED REESTABLISHED OBLITERATED CORNER REBUILT

PHYSICAL DESCRIPTION OF CORNER FOUND; EVIDENCE AND METHOD USED TO IDENTIFY OR REESTABLISH
 Fd 3/4" I.P. LS3733 Dn-0.1' Identified by record of survey filed in Vol 17 at pages 37-40 Madera County Records

PHYSICAL DESCRIPTION OF MONUMENTS RESULT OR PERPETUATED

CALIFORNIA COORDINATE SYSTEM ORDER: FIRST SECOND THIRD
 STATIONS USED: NGS (USC & GS) STATE COUNTY OTHER STATION _____
 ZONE _____ ELEVATION _____ NORTHINGS (N) _____ EASTINGS (E) _____

SKETCH: (Include reference tie or witness points, remarks and topo of area)



BEDESEN-CARDOZA-ANDREWS, INC.
 Civil Engineering-Land Surveying
 777 W. 22nd St., P.O. Box 391
 Merced, California 95341
 (209) 722-8042

SURVEYOR'S CERTIFICATE
 THIS CORNER RECORD WAS REESTABLISHED BY ME EDWARD M. CARDOZA UNDER MY
 DIRECTION IN CONFORMANCE WITH THE LAND SURVEYORS ACT
 ON 4-22 19 91
 SIGNED: Edward M. Cardoza
 L.S. or R.C.E. No. 3733
 STATE OF CALIFORNIA

EXP. 6-30-92

COUNTY SURVEYOR'S CERTIFICATE
 THE CORNER RECORD WAS RECEIVED 5-22 19 91
 AND EXAMINED AND FILED 5-23 19 91
 BY Dave Slinger
 TITLE: C. Eng
 DOCUMENT No. _____
 STATEMENT ON BACK OF SHEET YES NO