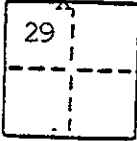


CORNER RECORD

COUNTY OF MADERA T. 9 S. R. 16 E. M.D.B. & MERIDIAN CALIF.

CORNER TYPE: GOVT. CORNER MEANDER RANCHO CONTROL OTHER

CORNER IDENTIFICATION - DATE OF VISIT Aug 16 1990



N 1/4 cor sec 29 T.9S. R.16E.

CORNER - LEFT AS FOUND FOUND AND TAGGED REESTABLISHED OBLITERATED CORNER RESULT

PHYSICAL DESCRIPTION OF CORNER FOUND; EVIDENCE AND METHOD USED TO IDENTIFY OR REESTABLISH

Found 3/4" I.P. tag unreadable. Retagged LS3733. Identified by record of survey filed in Vol 17 at pages 37-40 Madera County Records.

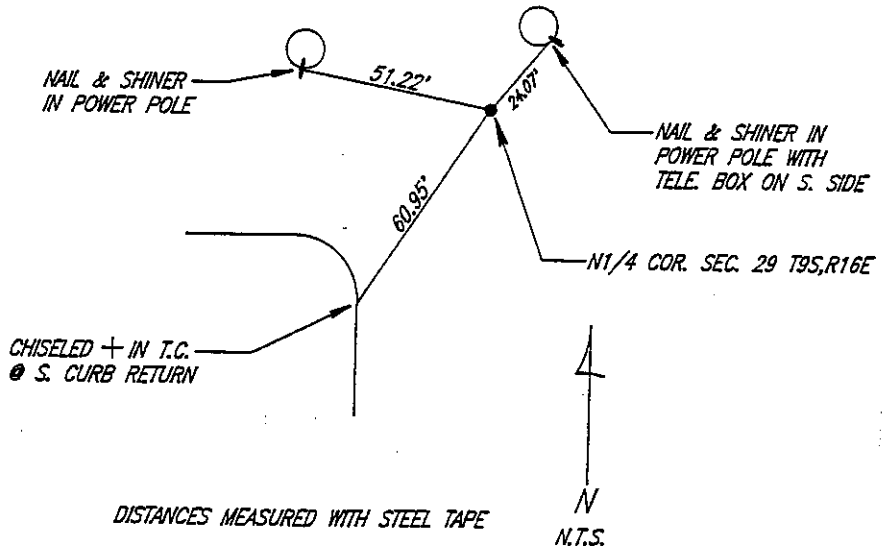
PHYSICAL DESCRIPTION OF MONUMENTS RESULT OR PERPETUATED


CALIFORNIA COORDINATE SYSTEM ORDER: FIRST SECOND THIRD

STATIONS USED: NGS (USC & GS) STATE COUNTY OTHER STATION _____

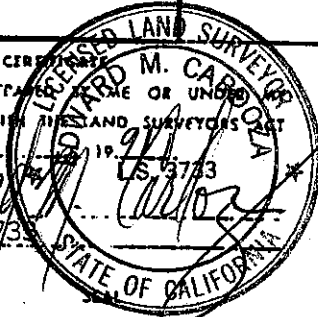
ZONE _____ ELEVATION _____ NORTHINGS (Y) _____ EASTINGS (X) _____

SKETCH: (Include reference tie or witness points, remarks and topo of area)



 **BEDESEN-CARDOZA-ANDREWS, INC.**
Civil Engineering-Land Surveying
777 W. 22nd St., P.O. Box 391
Merced, California 95341
(209) 722-8042

SURVEYOR'S CERTIFICATE
THIS CORNER RECORD WAS PREPARED BY STUART M. CARDOZA IN THE
DIRECTION IN CONFORMANCE WITH THE LAND SURVEYORS ACT
ON 4-22 1991 LS 3733
SIGNED: Stuart M. Cardoza
L.S. or R.C.E. No. LS3733



COUNTY SURVEYOR'S CERTIFICATE
THE CORNER RECORD WAS RECEIVED 5-22 1991
AND EXAMINED AND FILED 5-23 1991
BY W. Eugene Shindler
TITLE: Co. Eng.

DOCUMENT No. _____

STATEMENT ON BACK OF SHEET

YES NO

EXP. 6-30-92