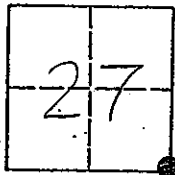


CORNER RECORD

COUNTY OF MADERA TOWNSHIP 9 SOUTH, RANGE 16 EAST, M. D. B. & M. CALIFORNIA

CORNER TYPE: GOV'T. CORNER MEANDER RANCHO CONTROL OTHER

CORNER IDENTIFICATION - DATE OF VISIT: JULY 22 1993



SOUTH EAST CORNER, SECTION 27, 9/16.

CORNER - LEFT AS FOUND FOUND AND TAGGED REESTABLISHED OBLITERATED CORNER REBUILT

PHYSICAL DESCRIPTION OF CORNER FOUND; EVIDENCE AND METHOD USED TO IDENTIFY OR REESTABLISH

FOUND 1 1/2" IRON PIPE, TAGGED R.C.E. 16995, DOWN 4".

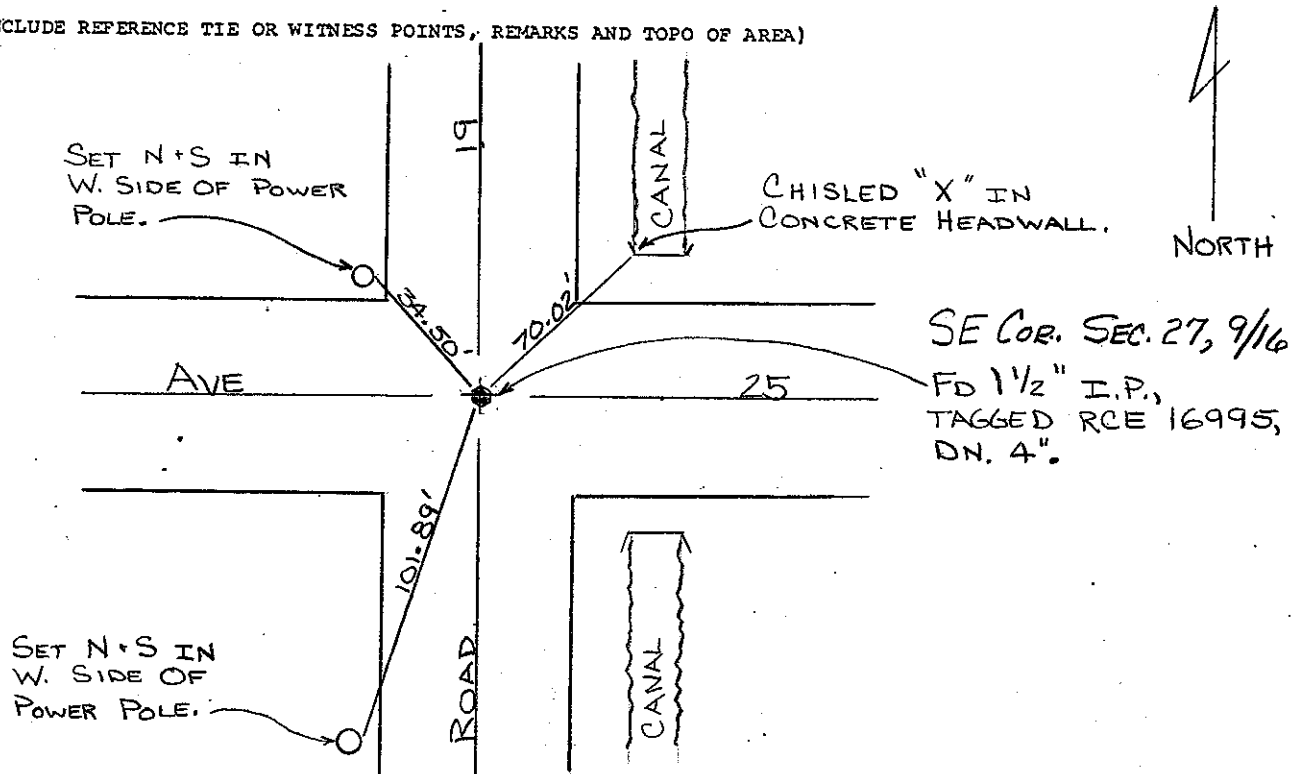
PHYSICAL DESCRIPTION OF MONUMENTS REBUILT OR PERPETUATED

CALIFORNIA COORDINATE SYSTEM ORDER: FIRST SECOND THIRD

STATIONS USED: NGS (USC & GS) STATE COUNTY OTHER STATION _____ STATION _____

ZONE _____ ELEVATION _____ NORTHINGS (Y) _____ EASTINGS (X) _____

SKETCH: (INCLUDE REFERENCE TIE OR WITNESS POINTS, REMARKS AND TOPO OF AREA)



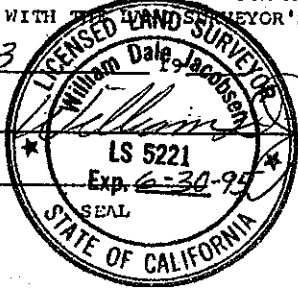
SURVEYOR'S CERTIFICATE

THIS CORNER RECORD WAS PREPARED BY ME OR UNDER MY DIRECTION IN CONFORMANCE WITH THE SURVEYOR'S ACT ON

Nov. 22, 1993

SIGNED: _____

(L.S) OF R.C.E. No: _____



COUNTY SURVEYOR'S CERTIFICATE

THE CORNER RECORD WAS RECEIVED 12-1 1993
AND EXAMINED AND FILED 12-3 1993.

BY: Ken J. Kell

TITLE: EUG. TECH.

DOCUMENT No: 39121

STATEMENT ON BACK OF SHEET: YES NO