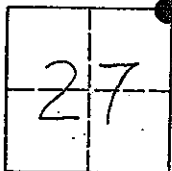


CORNER RECORD

COUNTY OF MADERA TOWNSHIP 9 SOUTH, RANGE 16 EAST, M.D.B.&M. CALIFORNIA

CORNER TYPE: GOV'T. CORNER MEANDER RANCHO CONTROL OTHER

CORNER IDENTIFICATION - DATE OF VISIT: July 22 1993



NORTH EAST CORNER, SECTION 27, 9/16.

CORNER - LEFT AS FOUND FOUND AND TAGGED REESTABLISHED OBLITERATED CORNER REBUILT

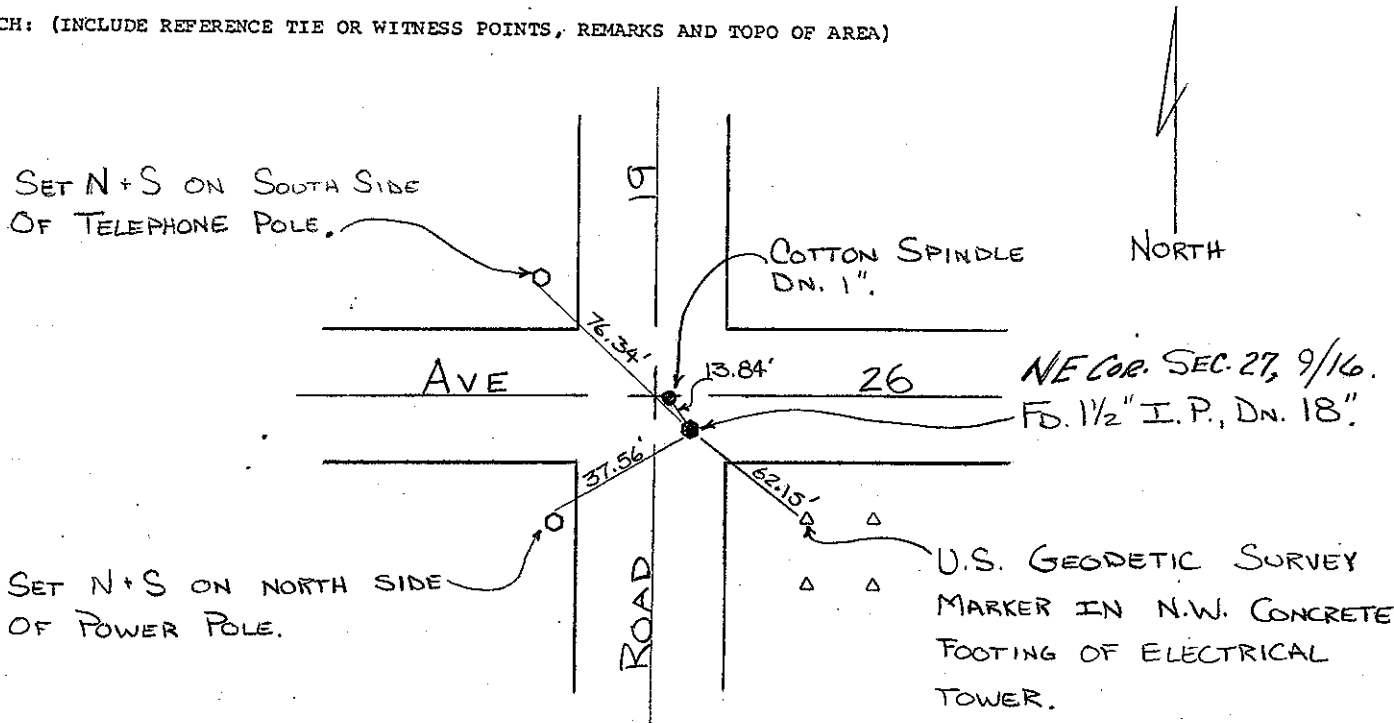
PHYSICAL DESCRIPTION OF CORNER FOUND; EVIDENCE AND METHOD USED TO IDENTIFY OR REESTABLISH

FOUND 1 1/2" IRON PIPE, NOT TAGGED, DOWN 18".

PHYSICAL DESCRIPTION OF MONUMENTS REBUILT OR PERPETUATED

CALIFORNIA COORDINATE SYSTEM ORDER: FIRST SECOND THIRD
 STATIONS USED: NGS (USC & GS) STATE COUNTY OTHER STATION _____ STATION _____
 ZONE _____ ELEVATION _____ NORTHINGS (Y) _____ EASTINGS (X) _____

SKETCH: (INCLUDE REFERENCE TIE OR WITNESS POINTS, REMARKS AND TOPO OF AREA)

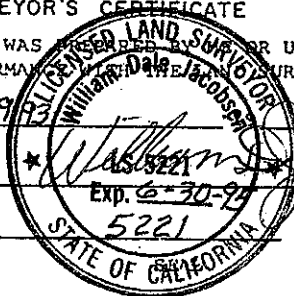


SURVEYOR'S CERTIFICATE

THIS CORNER RECORD WAS RECEIVED AND RECORDED UNDER MY DIRECTION IN CONFORMANCE WITH THE SURVEYOR'S ACT ON

Nov. 22, 1993

SIGNED: _____



L.S. or R.C.E. No: _____

COUNTY SURVEYOR'S CERTIFICATE

THE CORNER RECORD WAS RECEIVED 12-1 1993

AND EXAMINED AND FILED 12-2 1993.

BY: K. J. Kel

TITLE: ENG. TECH.

DOCUMENT No. 39121B

STATEMENT ON BACK OF SHEET: YES NO