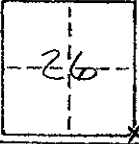


# CORNER RECORD

COUNTY OF Madera T. 9 S. R. 16 E MDB&M MERIDIAN CALIFORNIA

CORNER TYPE: GOVT. CORNER  MEANDER  RANCHO  CONTROL  OTHER

CORNER IDENTIFICATION — DATE OF VISIT October 24, 1974



S.E. corner of Section 26 T.9 S. R16 E M.D.B.&M.

CORNER — LEFT AS FOUND  FOUND AND TAGGED  REESTABLISHED OBLITERATED CORNER  REBUILT

PHYSICAL DESCRIPTION OF CORNER FOUND; EVIDENCE AND METHOD USED TO IDENTIFY OR REESTABLISH

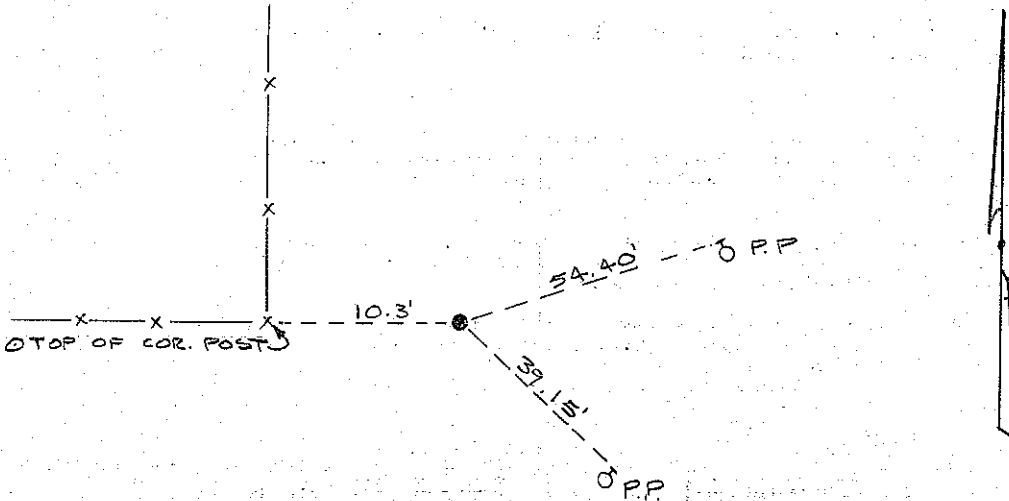
Reset corner as per Map of Fairmead Colony #3 Recorded in Volume 3 of Maps at Page 27 Madera County Records, Madera, California.

PHYSICAL DESCRIPTION OF MONUMENTS REBUILT OR PERPETUATED

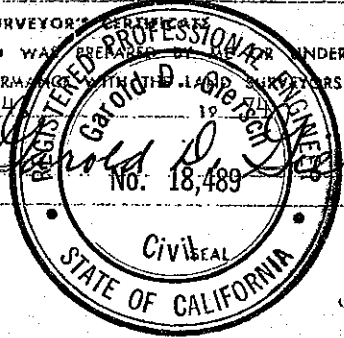
3/4" Iron Pipe tagged R.C.E. 18489 0.3' Under

CALIFORNIA COORDINATE SYSTEM ORDER: FIRST  SECOND  THIRD   
 STATIONS USED: NGS (USC & GS)  STATE  COUNTY  OTHER  STATION \_\_\_\_\_ STATION \_\_\_\_\_  
 ZONE \_\_\_\_\_ ELEVATION \_\_\_\_\_ NORTHINGS (Y) \_\_\_\_\_ EASTINGS (X) \_\_\_\_\_

SKETCH: (Include reference tie or witness points, remarks and topo of area)



SURVEYOR'S CERTIFICATE  
 THIS CORNER RECORD WAS PREPARED BY Garold D. Gersch UNDER MY  
 DIRECTION IN CONFORMANCE WITH THE LAND SURVEYORS ACT  
 ON November 4, 1974  
 SIGNED: Garold D. Gersch  
 L.S. or R.C.E. No.: No. 18,489



COUNTY SURVEYOR'S CERTIFICATE  
 THE CORNER RECORD WAS RECEIVED Nov. 4, 1974  
 AND EXAMINED AND FILED Dec. 3, 1974  
 BY Albert O. Grote  
 TITLE: County Engineer  
 DOCUMENT No. 74-29-2

STATEMENT ON BACK OF SHEET  
 YES  NO