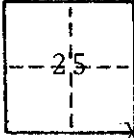


CORNER RECORD

COUNTY OF MADERA T. 9S R. 16E MDB&M MERIDIAN CALIFORNIA
 CORNER TYPE: GOVT. CORNER MEANDER RANCHO CONTROL OTHER
 CORNER IDENTIFICATION — DATE OF VISIT DECEMBER 11, 1974



S.E. Corner of Section 25
 T9S, R16E, M.D.B.&M.

CORNER — LEFT AS FOUND FOUND AND TAGGED REESTABLISHED OBLITERATED CORNER REBUILT

PHYSICAL DESCRIPTION OF CORNER FOUND; EVIDENCE AND METHOD USED TO IDENTIFY OR REESTABLISH

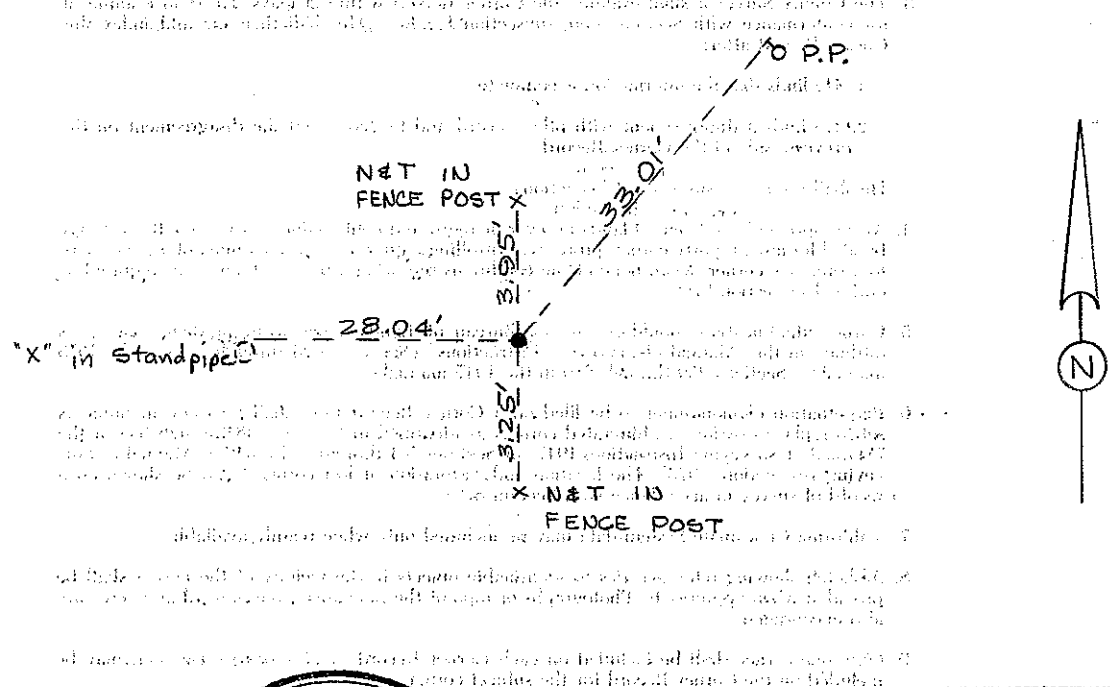
Found 1 1/2" Iron Pipe

PHYSICAL DESCRIPTION OF MONUMENTS REBUILT OR PERPETUATED

Tagged 1 1/2" Iron Pipe, R.C.E. 18,489

CALIFORNIA COORDINATE SYSTEM, ORDER: FIRST SECOND THIRD
 STATIONS USED: NCS (USC & GS) STATE COUNTY OTHER STATION: _____ STATION: _____
 ZONE _____ ELEVATION _____ NORTHINGS (N) _____ EASTINGS (E) _____

SKETCH: (Include reference tie or witness points, remarks and topo of area)



THIS CORNER RECORD PREPARED BY ME UNDER MY DIRECTION IN CONFORMANCE WITH THE LAND SURVEYORS ACT ON December 11, 1974
 SIGNED: David W. Deusch
 L.S. or R.C.E. No. 18,489
 REGISTERED PROFESSIONAL SURVEYOR
 No. 18,489
 Civil
 STATE OF CALIFORNIA

COUNTY SURVEYOR'S CERTIFICATE
 THE CORNER RECORD WAS RECEIVED 12/12 1974
 AND EXAMINED AND FILED 12/27 1974
 BY: A. Grote
 TITLE: County Engineer
 DOCUMENT No. 74-34-3
 STATEMENT ON BACK OF SHEET YES NO