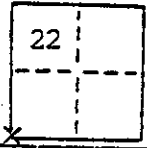


CORNER RECORD

COUNTY OF Madera T. 9 S R. 16E M.D.B. & MERIDIAN CALIF
 CORNER TYPE: GOVT. CORNER MEANDER RANCHO CONTROL OTHER
 CORNER IDENTIFICATION - DATE OF VISIT August 16 19 90



SW Cor. Sec 22 T.9S. R.16E.

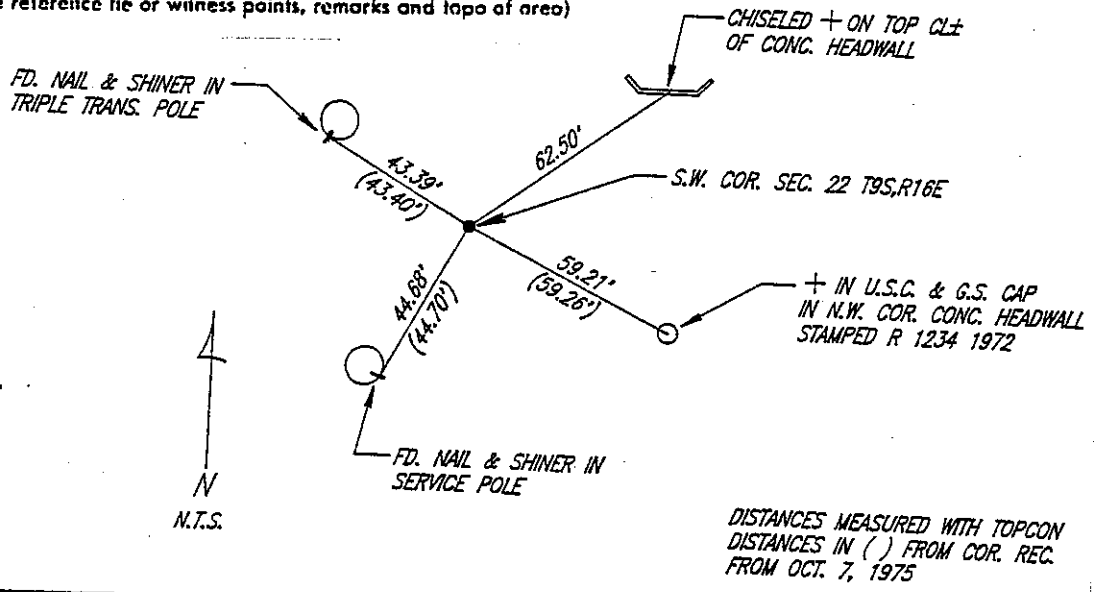
CORNER - LEFT AS FOUND FOUND AND TAGGED REESTABLISHED OBLITERATED CORNER RESULT

PHYSICAL DESCRIPTION OF CORNER FOUND; EVIDENCE AND METHOD USED TO IDENTIFY OR REESTABLISH
 Fd 1" I.P. No tag On 2.5' tagged LS3733. Identified by corner record on file Madera County (Ties only) and record of survey filed in Vol 17 at pages 37-40 shows 1" I.P.

PHYSICAL DESCRIPTION OF MONUMENTS RESULT OR PERPETUATED

CALIFORNIA COORDINATE SYSTEM ORDER: FIRST SECOND THIRD
 STATIONS USED: NGS (USC & GSI) STATE COUNTY OTHER STATION _____ STATION _____
 ZONE _____ ELEVATION _____ NORTHINGS (Y) _____ EASTINGS (X) _____

SKETCH: (Include reference tie or witness points, remarks and topo of area)



BEDESEN-CARDOZA-ANDREWS, INC.
 Civil Engineering-Land Surveying
 777 W. 22nd St. P.O. Box 391
 Merced, California 95341
 (209) 722-8042

SURVEYOR'S CERTIFICATE
 THIS CORNER RECORD WAS PREPARED BY ME OR UNDER MY SUPERVISION AND IN CONFORMANCE WITH THE LAND SURVEYING ACT ON 4-22 19 90 FOR LS 3733
 SIGNED: *[Signature]*
 L.S. or R.C.E. No.: LS 3733



EXP. 6-30-92

COUNTY SURVEYOR'S CERTIFICATE
 THE CORNER RECORD WAS RECEIVED 5-22 19 91
 AND EXAMINED AND FILED 5-23 19 91
 BY: *[Signature]*
 TITLE: Corner

DOCUMENT No. _____
 STATEMENT ON BACK OF SHEET YES NO