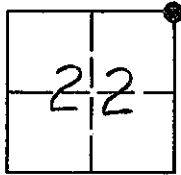


CORNER RECORD

COUNTY OF MADERA TOWNSHIP 9 SOUTH, RANGE 16 EAST, M.D.B. & M. CALIFORNIA

CORNER TYPE: GOV'T CORNER MEANDER RANCHO CONTROL OTHER

CORNER IDENTIFICATION - DATE OF VISIT: November 16, 1993



Northeast Corner Section 22, 9/16

CORNER - LEFT AS FOUND FOUND AND TAGGED REESTABLISHED OBLITERATED CORNER REBUILT

PHYSICAL DESCRIPTION OF CORNER FOUND; EVIDENCE AND METHOD USED TO IDENTIFY OR REESTABLISH

Found 3/4" iron pipe, not tagged, down 6"

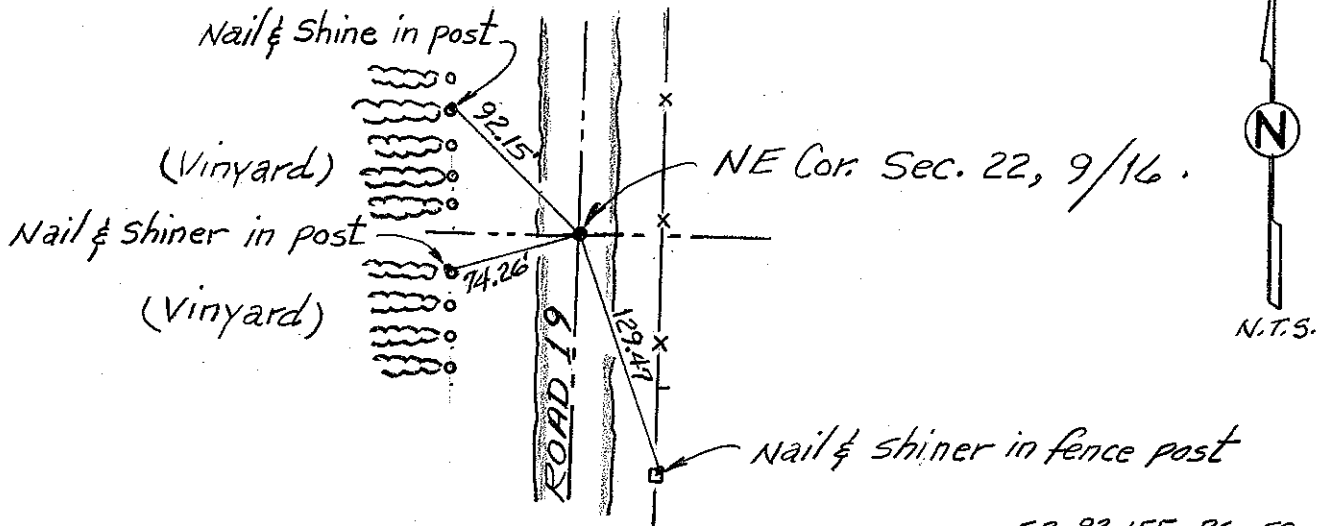
PHYSICAL DESCRIPTION OF MONUMENTS REBUILT OR PERPETUATED

CALIFORNIA COORDINATE SYSTEM ORDER: FIRST SECOND THIRD

STATION USED: NGS (USC & GS) STATE COUNTY OTHER STATION _____ STATION _____

ZONE _____ ELEVATION _____ NORTHINGS (Y) _____ EASTERINGS (X) _____

SKETCH: (INCLUDE REFERENCE TIE OR WITNESS POINTS, REMARKS AND TOPO OF AREA)



F.B. 93-155, PG. 58

SURVEYOR'S CERTIFICATE

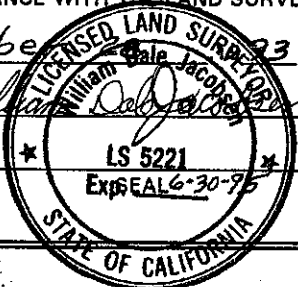
THIS CORNER RECORD WAS PREPARED BY ME OR UNDER MY DIRECTION IN CONFORMANCE WITH THE LAND SURVEYOR'S ACT ON

December 23, 1993

SIGNED: William Dale Jacobson

or R.C.E No: 5221

JN. V9305159



COUNTY SURVEYOR'S CERTIFICATE

THE CORNER RECORD WAS RECEIVED 12-15, 1993

AND EXAMINED AND FILED 12-20, 1993

BY: K. Kell

TITLE: ENG. TECH.

DOCUMENT NO. 395121

STATEMENT ON BACK OF SHEET: YES NO