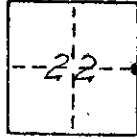


**CORNER RECORD**

COUNTY OF MADERA T. 9 S. R. 16 E. M.D.B. & M. MERIDIAN CALIFORNIA  
 CORNER TYPE: GOV'T. CORNER  MEANDER  RANCHO  CONTROL  OTHER   
 CORNER IDENTIFICATION — DATE OF VISIT DEC 18 1974



*E 1/4 COR SEC. 22*

CORNER — LEFT AS FOUND  FOUND AND TAGGED  REESTABLISHED OBLITERATED CORNER  REBUILT

PHYSICAL DESCRIPTION OF CORNER FOUND; EVIDENCE AND METHOD USED TO IDENTIFY OR REESTABLISH

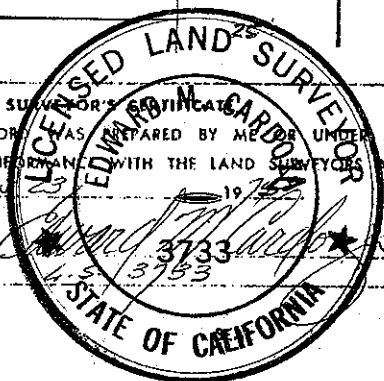
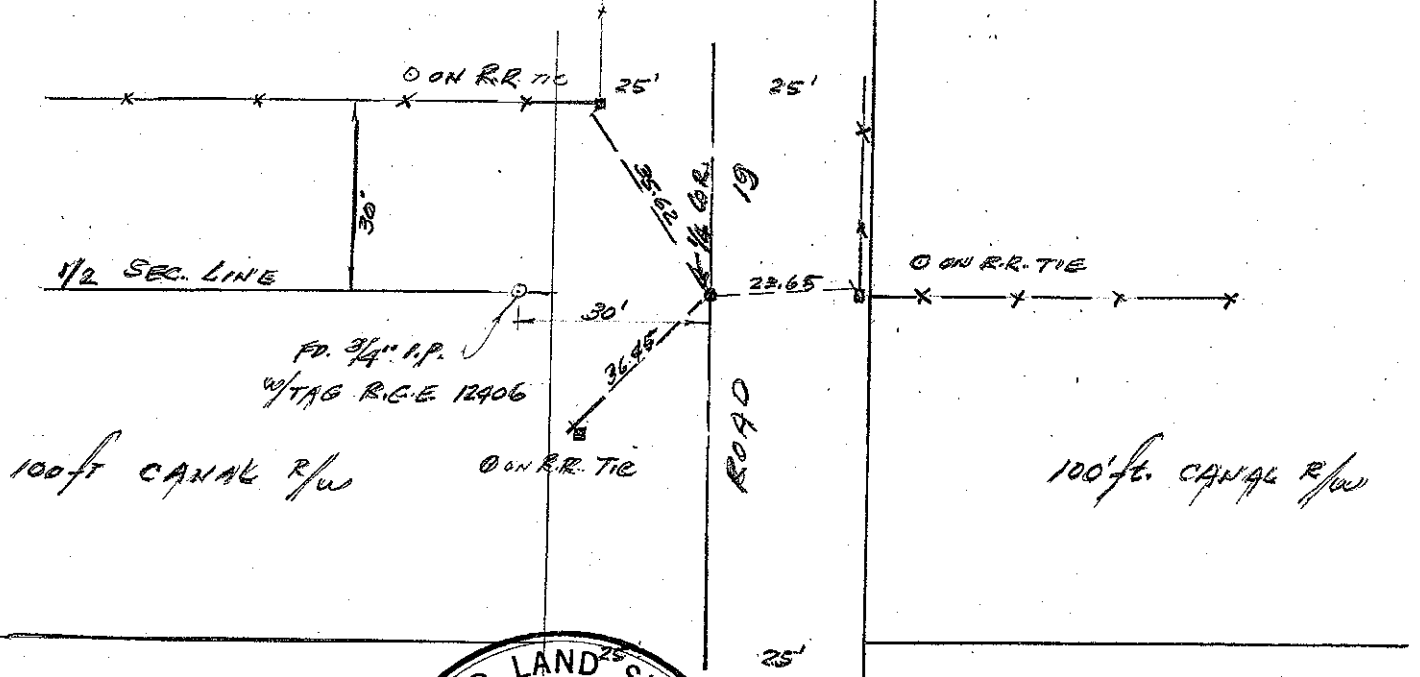
*FD. SPIKE w/ 2' OFFSETS 30.00 ft. E. of 3/4" I.P.  
 w/TAB R.C.E. 12406*

PHYSICAL DESCRIPTION OF MONUMENTS REBUILT OR PERPETUATED

*REPLACED SPIKE w/ 3/4" I.P. w/TAB L.S. 3733*

CALIFORNIA COORDINATE SYSTEM ORDER: FIRST  SECOND  THIRD   
 STATIONS USED: NGS (USC & GS)  STATE  COUNTY  OTHER  STATION \_\_\_\_\_ STATION \_\_\_\_\_  
 ZONE \_\_\_\_\_ ELEVATION \_\_\_\_\_ NORTHINGS (N) \_\_\_\_\_ EASTINGS (E) \_\_\_\_\_

SKETCH: (Include reference tie or witness points, remarks and topo of area)



SURVEYOR'S CERTIFICATE  
 THIS CORNER RECORD WAS PREPARED BY ME OR UNDER MY DIRECTION IN CONFORMANCE WITH THE LAND SURVEYORS ACT ON JAN 23 1975  
 SIGNED: *[Signature]* 3733  
 L.S. or R.C.E. No.: 3733

COUNTY SURVEYOR'S CERTIFICATE  
 THE CORNER RECORD WAS RECEIVED JAN 30 1975 AND EXAMINED AND FILED JAN 31 1975  
 BY: *[Signature]*  
 TITLE: County Engineer  
 DOCUMENT No. 75-7-1  
 STATEMENT ON BACK OF SHEET YES  NO