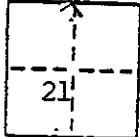


CORNER RECORD

COUNTY OF MADERA T. 9 S. R. 16 E. M.D.B. & MERIDIAN CA
 CORNER TYPE: GOVT. CORNER MEANDER RANCHO CONTROL OTHER
 CORNER IDENTIFICATION - DATE OF VISIT Aug 16 19 90



N 1/4 corner sec 21 T 9S R16E

CORNER - LEFT AS FOUND FOUND AND TAGGED REESTABLISHED OBLITERATED CORNER RESULT

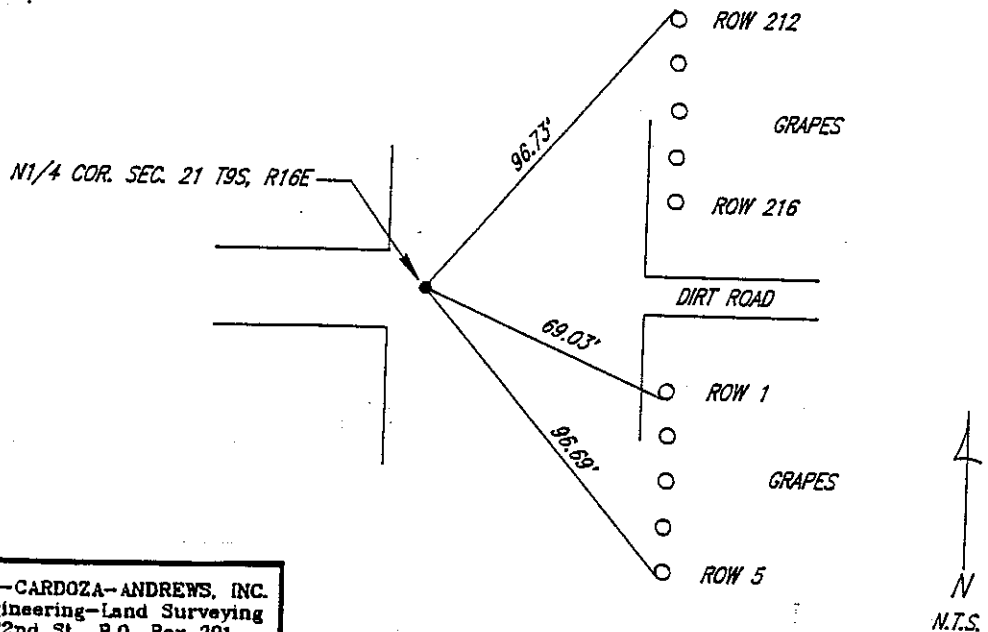
PHYSICAL DESCRIPTION OF CORNER FOUND; EVIDENCE AND METHOD USED TO IDENTIFY OR REESTABLISH

Fd 4" x 6" rdwd post North side of fence post. Both posts burnt off at ground level. Set 1/6" bolt in center rdwd post tagged LS 3733. identified by record of survey filed in Vol 17 at pages 37-40 Madera County records.

PHYSICAL DESCRIPTION OF MONUMENTS RESULT OR PERPETUATED

CALIFORNIA COORDINATE SYSTEM ORDER: FIRST SECOND THIRD
 STATIONS USED: NGS (USC & GSI) STATE COUNTY OTHER STATION _____ STATION _____
 ZONE _____ ELEVATION _____ NORTHINGS (Y) _____ EASTINGS (X) _____

SKETCH: (Include reference tie or witness points, remarks and topo of area)





BEDESEN-CARDOZA-ANDREWS, INC.
 Civil Engineering-Land Surveying
 777 W. 22nd St., P.O. Box 391
 Merced, California 95341
 (209) 722-8042

DISTANCES MEASURED WITH TOPCON

SURVEYOR'S CERTIFICATE
 THIS CORNER RECORD WAS PREPARED BY ME BEDESEN-CARDOZA-ANDREWS, INC. UNDER MY
 DIRECTION IN CONFORMANCE WITH THE LAND SURVEYORS ACT
 ON 4-22 19 90
 SIGNED: [Signature]
 L.S. or R.C.E. No. LS 3733



COUNTY SURVEYOR'S CERTIFICATE
 THE CORNER RECORD WAS RECEIVED 5-22 1991
 AND EXAMINED AND FILED 5-23 1991
 BY: [Signature]
 TITLE: Co. Log

DOCUMENT No. _____

STATEMENT ON BACK OF SHEET

YES NO

EXP. 6-30-92