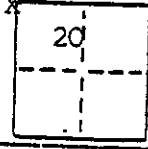


CORNER RECORD

COUNTY OF MADERA T. 9 S. R. 16 E. M.D.B. & MERIDIAN CA.
 CORNER TYPE: GOVT. CORNER MEANDER RANCHO CONTROL OTHER
 CORNER IDENTIFICATION - DATE OF VISIT August 16 1990



NW Cor sec 20 T9S R16E

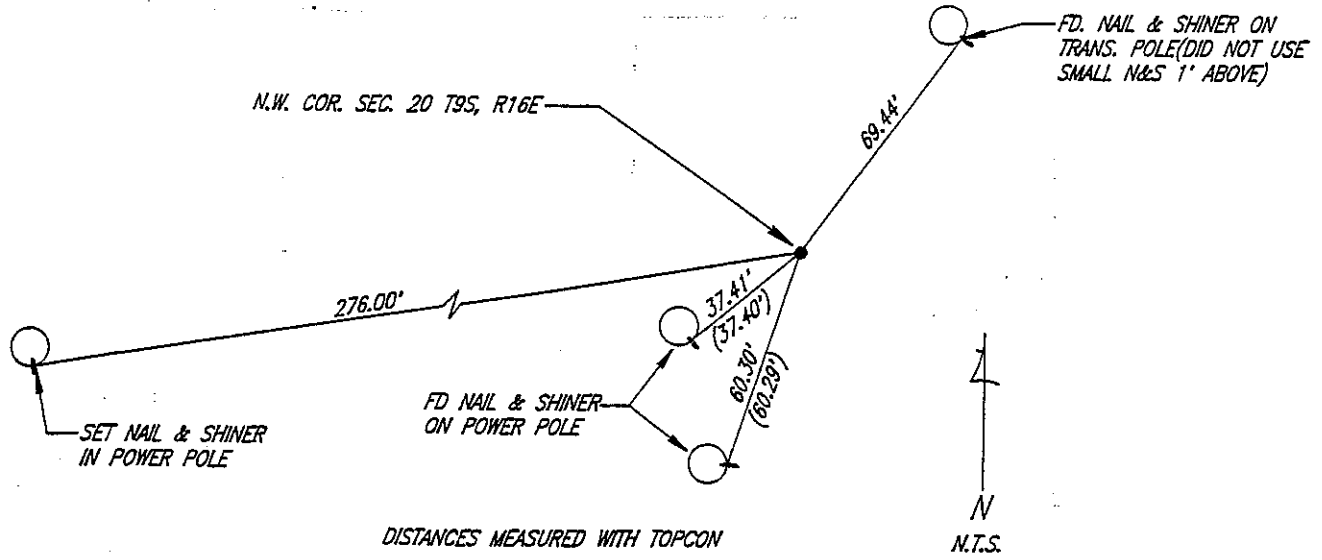
CORNER - LEFT AS FOUND FOUND AND TAGGED REESTABLISHED OBLITERATED CORNER RESULT

PHYSICAL DESCRIPTION OF CORNER FOUND; EVIDENCE AND METHOD USED TO IDENTIFY OR REESTABLISH.
 Fd. 3/4" I.P. with tag L.S. 3733 down 0.3' Identified by prior corner record filed in Madera County

PHYSICAL DESCRIPTION OF MONUMENTS RESULT OR PERPETUATED

CALIFORNIA COORDINATE SYSTEM ORDER: FIRST SECOND THIRD
 STATIONS USED: NGS (USC & GSI) STATE COUNTY OTHER STATION _____ STATION _____
 ZONE _____ ELEVATION _____ NORTHINGS (N) _____ EASTINGS (E) _____

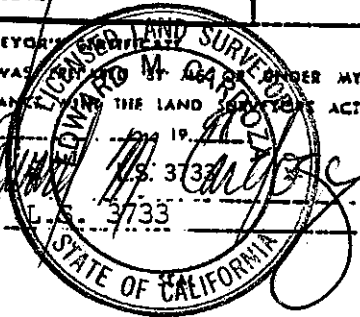
SKETCH: (Include reference tie or witness points, remarks and topo of area)



DISTANCES MEASURED WITH TOPCON

 **BEDESEN-CARDOZA-ANDREWS, INC.**
 Civil Engineering-Land Surveying
 777 W. 22nd St., P.O. Box 391
 Merced, California 95341
 (209) 722-8042

SURVEYOR'S CERTIFICATE
 THIS CORNER RECORD WAS RECEIVED BY ME AND UNDER MY
 DIRECTION IN CONFORMANCE WITH THE LAND SURVEYOR ACT
 ON 4-22 1990
 SIGNED: [Signature]
 L.S. or R.C.E. No. 3733



COUNTY SURVEYOR'S CERTIFICATE
 THE CORNER RECORD WAS RECEIVED 5-23 1991
 AND EXAMINED AND CHECKED 5-23-91
 BY: [Signature]
 TITLE: Co. Eng.

DOCUMENT No. _____
 STATEMENT ON BACK OF SHEET
 YES NO