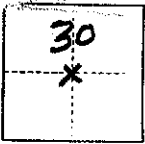


CORNER RECORD

COUNTY OF MADERA T. 8S R. 23E MD MERIDIAN CALIFORNIA
CORNER TYPE: GOV'T. CORNER MEANDER RANCHO CONTROL OTHER
IDENTIFICATION — DATE OF VISIT 8-11 19 75



C/4 Cor Sec 30, T8S, R23E, MDB&M

CORNER — LEFT AS FOUND FOUND AND TAGGED REESTABLISHED OBLITERATED CORNER REBUILT

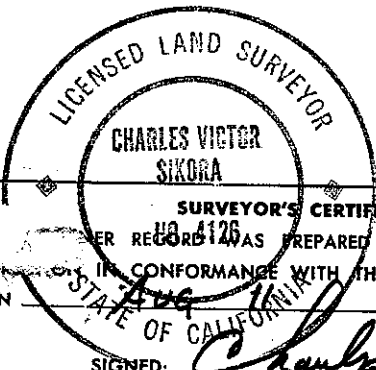
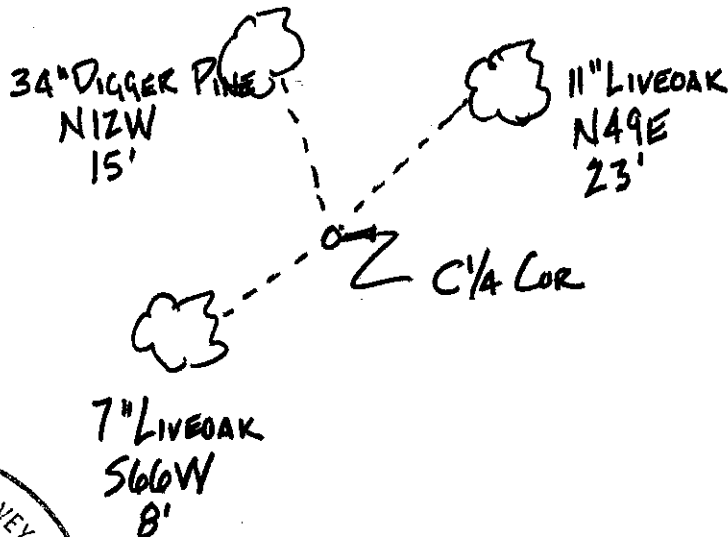
PHYSICAL DESCRIPTION OF CORNER FOUND; EVIDENCE AND METHOD USED TO IDENTIFY OR REESTABLISH

FOUND STANDARD P.G. & E. COR. WITH I.D. AS NOTED ON R/S MAP IN BK. 17, PG. 64.

PHYSICAL DESCRIPTION OF MONUMENTS REBUILT OR PERPETUATED

CALIFORNIA COORDINATE SYSTEM ORDER: FIRST SECOND THIRD
STATIONS USED: NGS (USC & GS) STATE COUNTY OTHER STATION _____ ELEVATION _____ NORTHINGS (Y) _____ EASTINGS (X) _____

SKETCH: (Include reference tie or witness points, remarks and topo of area)



SURVEYOR'S CERTIFICATE
THIS CORNER RECORD WAS PREPARED BY ME OR UNDER MY SUPERVISION IN CONFORMANCE WITH THE LAND SURVEYORS ACT ON Aug 11 19 75 IN THE COUNTY OF MADERA STATE OF CALIFORNIA
SIGNED: Charles Victor Sikora
L.S. or R.C.E. No.: LS4126

COUNTY SURVEYOR'S CERTIFICATE
THE CORNER RECORD WAS RECEIVED Aug 11 19 75 AND EXAMINED AND FILED Aug 11 19 75
BY: W.D. Grote
TITLE: County Engineer
DOCUMENT No. 75-26-01

STATEMENT ON BACK OF SHEET

YES NO