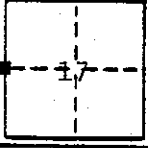


# CORNER RECORD

COUNTY OF Madera T. 8 S R. 23 E M.D.B. & MERIDIAN CALIFORNIA  
 CORNER TYPE: GOVT. CORNER  MEANDER  RANCHO  CONTROL  OTHER   
 CORNER IDENTIFICATION — DATE OF VISIT December 14, 1982



West 1/4 corner section 17 8/23  
 (Common to sections 17 and 18)

CORNER — LEFT AS FOUND  FOUND AND TAGGED  REESTABLISHED OBLITERATED CORNER  RESULT

PHYSICAL DESCRIPTION OF CORNER FOUND; EVIDENCE AND METHOD USED TO IDENTIFY OR REESTABLISH  
Found and Accepted: A 2 1/2" O.D., I.P., up 8" with a 3 1/2" brass cap stamped for the corner, with the BLM logo, per BLM notes of a dependent resurvey by Dale T. Bedell, Cadastral surveyor 1974. Found remains of original bearing tree per survey by J. R. Glover, 1878. Found 1 <sup>one</sup> bearing tree per the BLM resurvey in 1974.

PHYSICAL DESCRIPTION OF MONUMENTS RESULT OR PERPETUATED  
 Left monument as found. Set a metal post with a Forest Service K-tag and monument sign attached 4' + east of corner.

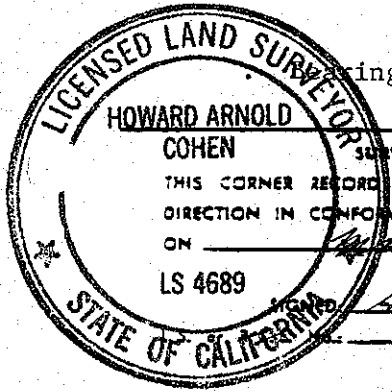
CALIFORNIA COORDINATE SYSTEM ORDER: FIRST  SECOND  THIRD   
 STATIONS USED: NGS (USC & GS)  STATE  COUNTY  OTHER  STATION \_\_\_\_\_ STATION \_\_\_\_\_  
 ZONE \_\_\_\_\_ ELEVATION \_\_\_\_\_ NORTHINGS (Y) \_\_\_\_\_ EASTINGS (X) \_\_\_\_\_

SKETCH: (Include reference tie or witness points, remarks and topo of area)

<u>Corner Ties</u>	<u>Cap Inscription</u>
<u>Original Bearing Trees</u>	T 8 S R 23 E
An Oak stump, 33" dia., bears N 34° 08' E; 23.1' (GLO 1878)	1/4
A fallen Ponderosa Pine, 14" dia., bears S 60° 31' E; 31.3'. (BLM 1974)	S 18   S 17 1974
<u>New Bearing Objects</u>	
A chiseled "+" in rock (3'X3'X14" high), bears N 4° 57' 48" E; 7.12'.	
A chiseled "+" in rock (4'X3 1/2'X16" high), bears N 77° 34' 22" W; 6.37'.	
A chiseled "+" in rock (2 1/2'X 1 1/2'X7" high), bears S 45° 18' 36" W; 15.55'.	
• The corner lies 1.15' NE of a found nail and shiner in a fence post (8"X8").	
• Fences run north and south from the corner.	
• A creek lies 15' + north of the corner. → ±	
• A creek lies 18' + west of the corner. ±	
• Corner is S 0° 16' 58" E; 2620.65' from NW corner section 17 8/23.	
• Corner is N 0° 00' 13" W; 2664.88' from SW corner section 17 8/23	

ings are to the center of trees at base.

L-5  
2-29



**SURVEYOR'S CERTIFICATE**  
 THIS CORNER RECORD WAS PREPARED BY ME OR UNDER MY DIRECTION IN CONFORMANCE WITH THE LAND SURVEYORS ACT ON Dec. 21 1983  
 LS 4689  
Howard Cohen  
4689

**COUNTY SURVEYOR'S CERTIFICATE**  
 THE CORNER RECORD WAS RECEIVED \_\_\_\_\_ 19\_\_\_\_  
 AND EXAMINED AND FILED \_\_\_\_\_ 19\_\_\_\_  
 BY: [Signature]  
 TITLE: \_\_\_\_\_  
 DOCUMENT No. \_\_\_\_\_  
 STATEMENT ON BACK OF SHEET