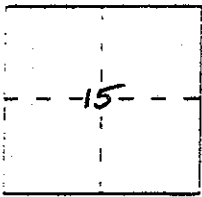


CORNER RECORD

Document Number _____

City of _____ County of Madera, California

Legal Description Lots 12 & 13 in Cascadel Woods Subdivision
per Book 7 of Maps at Page 37, M.C.R.



T. 8 S.
R. 23 E

CORNER TYPE

Government Corner Control
Meander Property
Rancho Other
Date of Survey August 25, 2004

COORDINATES
(Optional)

N. _____
E. _____
Zone _____ Datum _____
Elev. _____

Corner — Left as found Found and tagged Established Reestablished Rebuilt

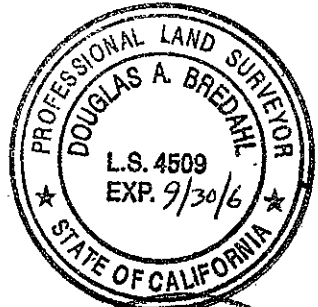
Identification and type of corner found: Evidence used to identify or procedure used to establish or reestablish the corner:
See sketch page 2

A description of the physical condition of the monument as found and as set or reset: _____

SURVEYOR'S STATEMENT

This Corner Record was prepared by me or under my direction in conformance with the Land Surveyors' Act on August 25, 2004

Signed Douglas Bredahl LS. Number 4509



COUNTY SURVEYOR'S STATEMENT

This Corner Record was received 9/1/04 and examined and filed 9/7/04

Signed David McGlasson Title ACTING CO. SURVEYOR

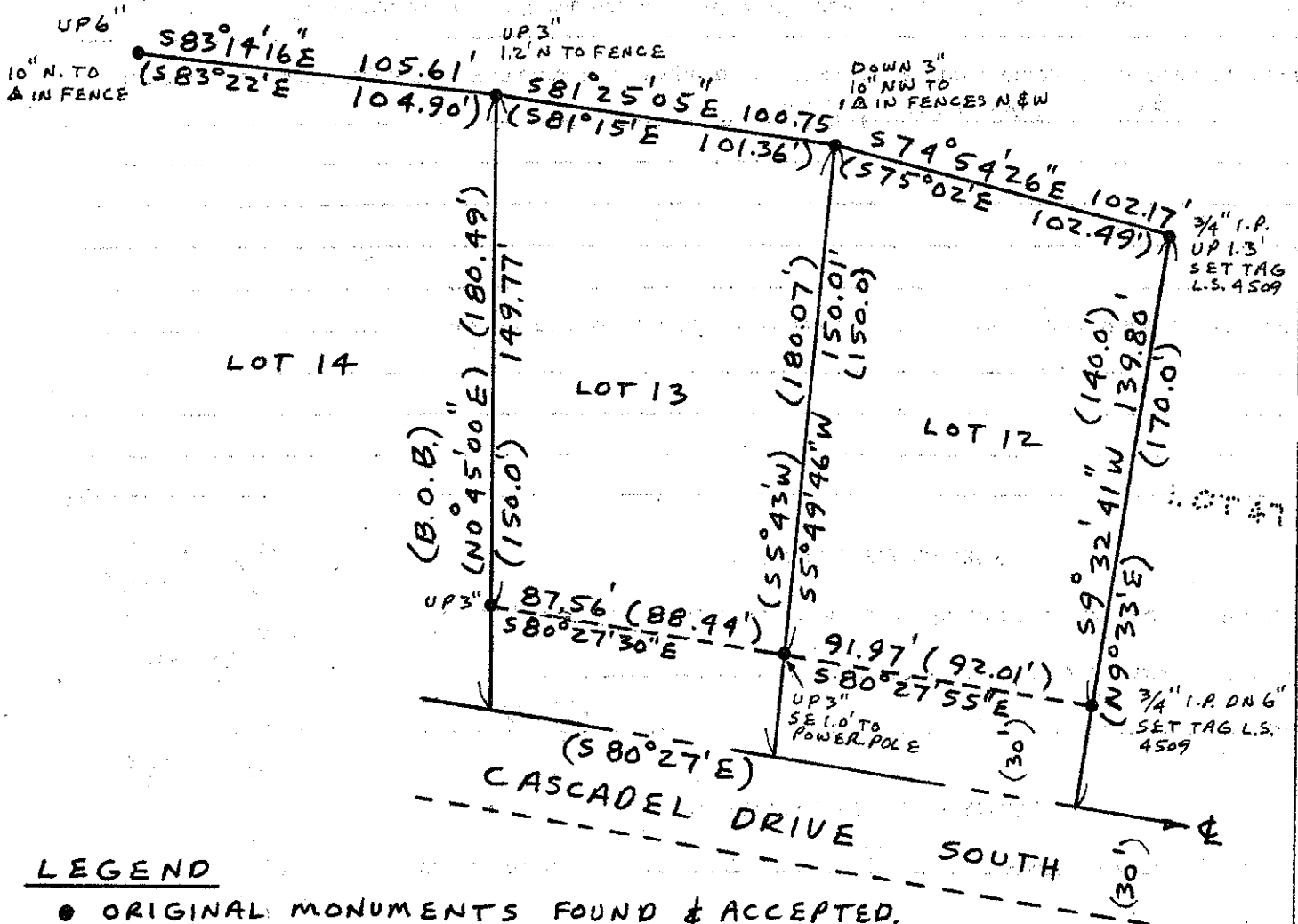


County Surveyor's Comment _____

NORTH



1" = 50'



LEGEND

- ORIGINAL MONUMENTS FOUND & ACCEPTED, 1/2" I.D.I.P.R., NO I.D., SET 3/4" BRASS CAP L.S. 4509 OR AS NOTED
- (...) RECORD DATA FROM CASCADEL WOODS SUBDIVISION, BOOK 7 OF MAPS, PAGE 37, M.C.R.
- △ ANGLE POINT