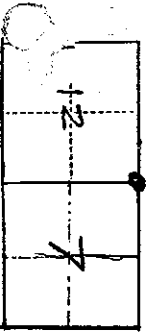


CORNER RECORD

COUNTY OF MADERA T. 8 South R. 22 & 23 EAST Mt Diablo MERIDIAN CALIFORNIA  
CORNER TYPE: GOVT. CORNER  MEANDER  RANCHO  CONTROL  OTHER   
CORNER IDENTIFICATION - DATE OF VISIT November 9, 1987



CORNER - LEFT AS FOUND  FOUND AND TAGGED  REESTABLISHED OBTERATED CORNER  REBUILT

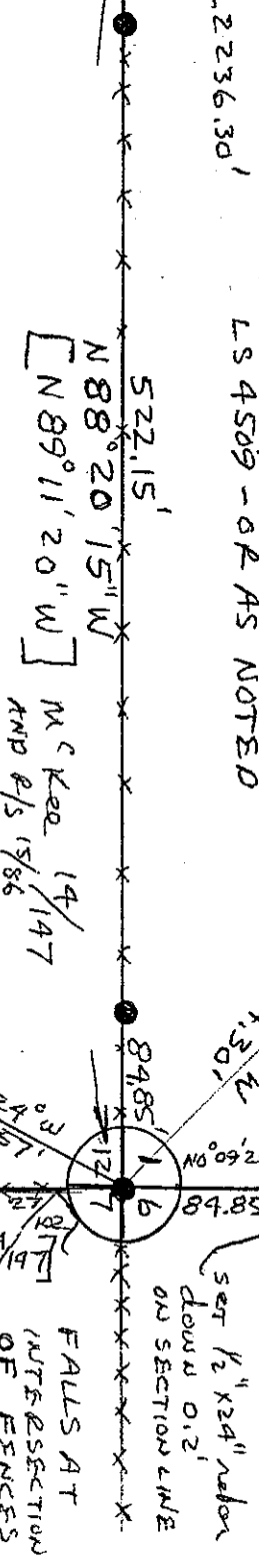
PHYSICAL DESCRIPTION OF CORNER FOUND, EVIDENCE AND METHOD USED TO IDENTIFY OR REESTABLISH ORIGINAL MONUMENT PER TIES ON FILE WAS TAKEN OUT BY TRACTOR WORK  
SEE THE FOLLOWING RECORD DATA:  
17/144, 17/69, 25/115, 27/102, 14/147, 23/30, 15/86

PHYSICAL DESCRIPTION OF MONUMENTS REBUILT OR PERPETUATED  
RESET  $\frac{3}{4}$ " X 30" I.D.I.P TAGGED L.S. 4509

CALIFORNIA COORDINATE SYSTEM ORDER: FIRST  SECOND  THIRD   
STATIONS USED: NGS (USC & GS)  STATE  COUNTY  OTHER  STATION \_\_\_\_\_ STATION \_\_\_\_\_  
ZONE \_\_\_\_\_ ELEVATION \_\_\_\_\_ NORTHINGS (N) \_\_\_\_\_ EASTINGS (E) \_\_\_\_\_

(Fold)

SKETCH: (Include reference tie or witness points, remarks and topo of area)



N 89° 11' 20" W R/S 15/86  
N 88° 20' 15" W 607.00  
1 1/2" I.D.I.P REC 5982

SURVEYOR'S CERTIFICATE

THIS CORNER RECORD WAS PREPARED BY ME OR UNDER MY DIRECTION IN CONFORMANCE WITH THE LAND SURVEYORS ACT ON NOVEMBER 11 1987

SIGNED: Douglas D. B. Breadahl

L.S. or R.C.E. No.:

COUNTY SURVEYOR'S CERTIFICATE

THE CORNER RECORD WAS RECEIVED \_\_\_\_\_ 19\_\_\_\_ AND EXAMINED AND FILED \_\_\_\_\_ 19\_\_\_\_

BY: \_\_\_\_\_ TITLE: \_\_\_\_\_

DOCUMENT No. \_\_\_\_\_

STATEMENT ON BACK OF SHEET

YES  NO

