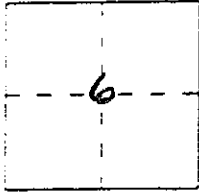


CORNER RECORD

Document Number _____

City of _____ County of MADERA, California

Brief Legal Description Parcel 3 of Parcel Map 1846, Book 26
Page 70, M.C.R.



TBS
R23E

CORNER TYPE

- Government Corner
- Meander
- Rancho
- Date of Survey _____
- Control
- Property
- Other

COORDINATES
(Optional)

N. _____
 E. _____
 Zone _____ Datum _____
 Elev. _____

Corner — Left as found Found and tagged Established Reestablished Rebuilt

Identification and type of corner found: Evidence used to identify or procedure used to establish or reestablish the corner:

Found original corners at NE, center of cul-de-sac and right-of-way, all 3/4" I.P.R. Tagged
L.S. 2737

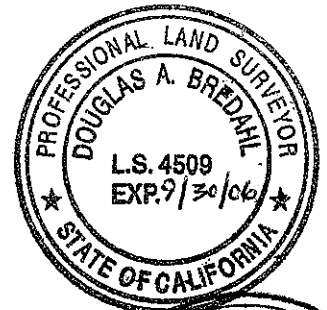
A description of the physical condition of the monument as found and as set or reset:

Set 3/4" x 30" I.P. per sketch on page 2, tagged
L.S. 4509, up 0.2'

SURVEYOR'S STATEMENT

This Corner Record was prepared by me or under my direction in conformance with the Land Surveyors' Act on January 28 2003

Signed Douglas A. Bredahl L.S. Number 4509



COUNTY SURVEYOR'S STATEMENT

This Corner Record was received 3/3/03 and examined

and filed 3/3/03

Signed David McGlasson Title ACTING Co. Surveyor

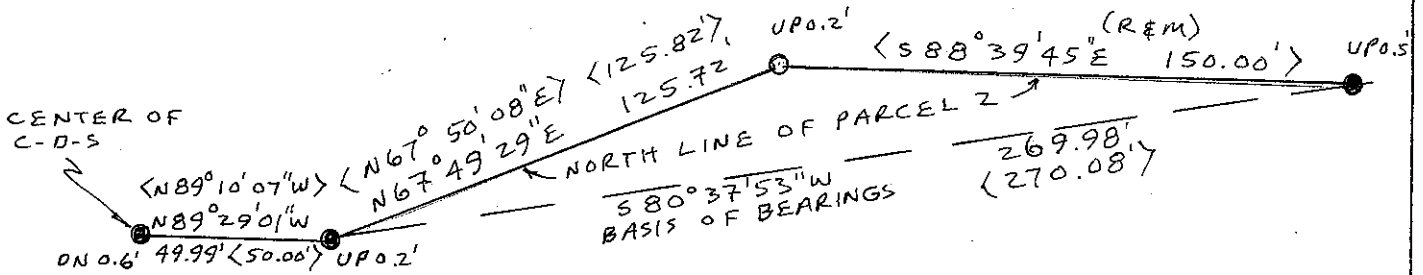


County Surveyor's Comment _____

NORTH



1" = 50'



LEGEND

● ORIGINAL MONUMENTS FOUND & ACCEPTED, $\frac{3}{4}$ " I.P. TAGGED L.S. 4509

○ MONUMENT SET, $\frac{3}{4}$ " I.P. TAGGED L.S. 4509

{...} RECORD DATA FROM PARCEL MAP 1846, $\frac{26}{70}$ M.C.R.