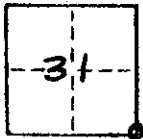


CORNER RECORD

COUNTY OF MADERA T. 8S R. 22E Mt. DIABLO MERIDIAN CALIFORNIA
 CORNER TYPE: GOVT. CORNER MEANDER RANCHO CONTROL OTHER
 CORNER IDENTIFICATION — DATE OF VISIT JUNE 2 1983



CORNER — LEFT AS FOUND FOUND AND TAGGED REESTABLISHED OBLITERATED CORNER REBUILT

PHYSICAL DESCRIPTION OF CORNER-FOUND: EVIDENCE AND METHOD USED TO IDENTIFY OR REESTABLISH

SET

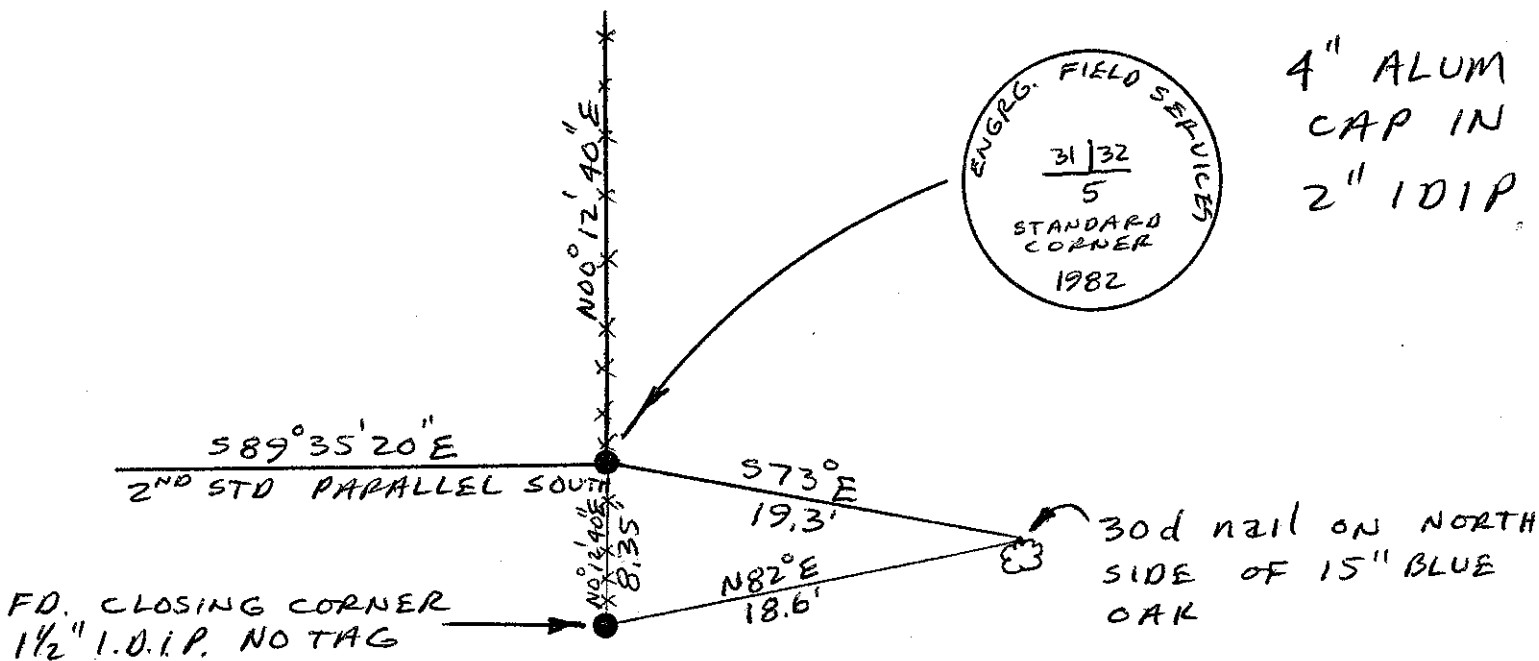
SET 2" I.D.I.P. UP WITH 4" ALUMINUM CAP
 STAMPED "ENGINEERING FIELD SERVICES" L.S. 4509
 1982 AMENDED CORNER

PHYSICAL DESCRIPTION OF MONUMENTS REBUILT OR PERPETUATED

2" I.D.I.P. WITH 4" ALUMINUM CAP
 SET IN ROCK MOUND

CALIFORNIA COORDINATE SYSTEM ORDER: FIRST SECOND THIRD
 STATIONS USED: NGS (USC & GS) STATE COUNTY OTHER STATION _____ STATION _____
 ZONE _____ ELEVATION _____ NORTHINGS (Y) _____ EASTINGS (X) _____

SKETCH: (Include reference tie or witness points, remarks and topo of area)



SURVEYOR'S CERTIFICATE

THIS CORNER RECORD WAS PREPARED BY ME OR UNDER MY DIRECTION IN CONFORMANCE WITH THE LAND SURVEYORS ACT ON June 2 1983

SIGNED: _____

L.S. or R.C.E. No.: _____

Daugford A. Breadall
 L.S. 4509

SEAL

COUNTY SURVEYOR'S CERTIFICATE

THE CORNER RECORD WAS RECEIVED _____ 19____ AND EXAMINED AND FILED _____ 19____

BY: *William A. Johnson*
 TITLE: *County Engineer*

DOCUMENT No. _____

STATEMENT ON BACK OF SHEET

YES NO