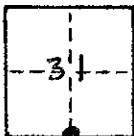


CORNER RECORD

COUNTY OF MADERA T. 8 S. R. 22 E Mt Diablo MERIDIAN CALIFORNIA
 CORNER TYPE: GOVT. CORNER MEANDER RANCHO CONTROL OTHER
 CORNER IDENTIFICATION — DATE OF VISIT 8-16 1984



CORNER — LEFT AS FOUND FOUND AND TAGGED REESTABLISHED OBLITERATED CORNER RESULT

PHYSICAL DESCRIPTION OF CORNER FOUND; EVIDENCE AND METHOD USED TO IDENTIFY OR REESTABLISH

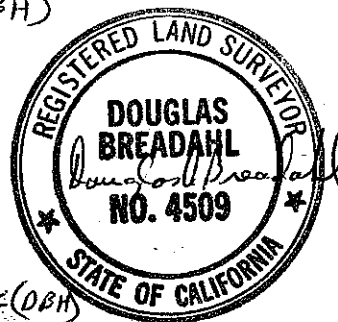
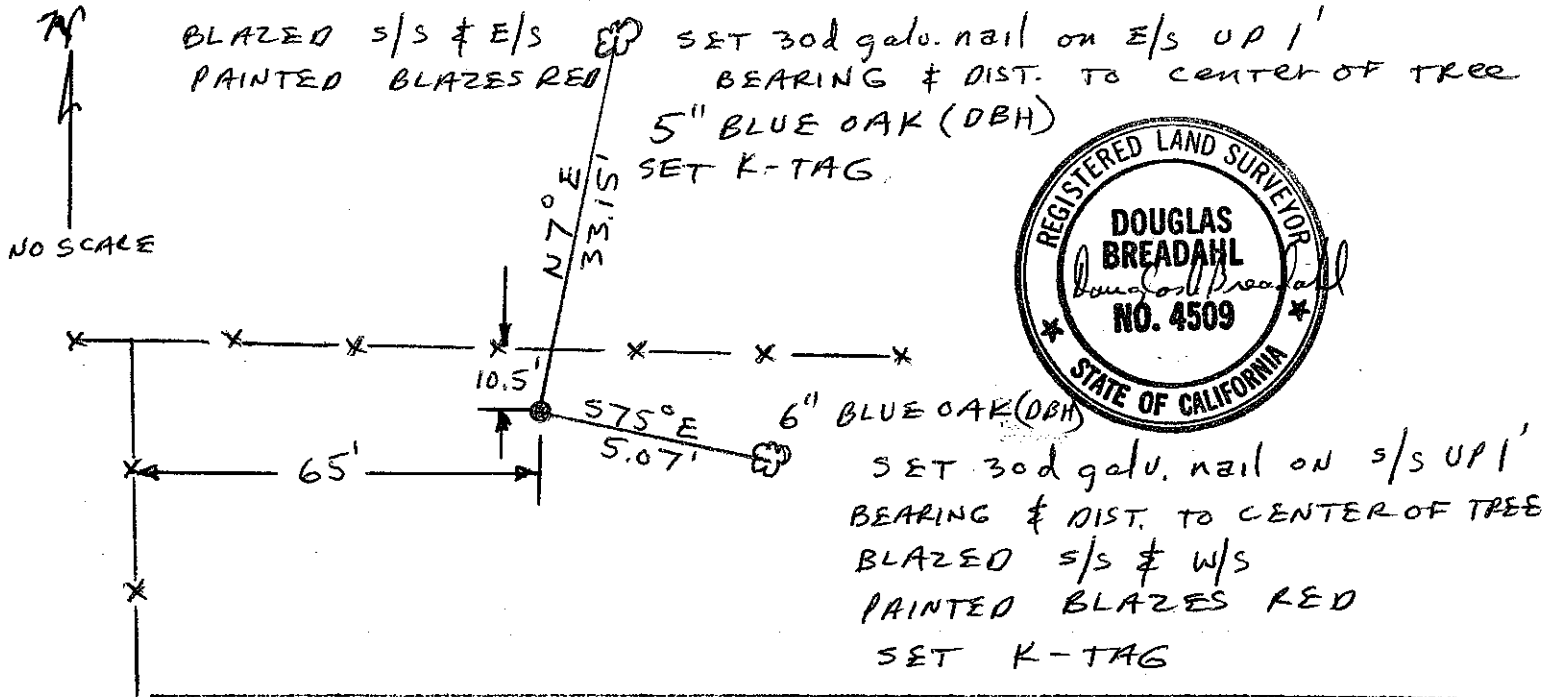
NO ORIGINAL EVIDENCE FOUND
 RESET CORNER PER MANUAL OF INSTRUCTIONS,
1973, (ESP. 3-87, 3-88, AND 3-107)
 PER R/S 28/130

PHYSICAL DESCRIPTION OF MONUMENTS RESULT OR PERPETUATED

SET $5/8$ " X 30" REBAR 25" IN GROUND WITH
 3" ALUMINUM CAP

CALIFORNIA COORDINATE SYSTEM ORDER: FIRST SECOND THIRD
 STATIONS USED: TGS (USC & GS) STATE COUNTY OTHER STATION CASTLE STATION _____
 ZONE 3 ELEVATION _____ NORTHINGS (Y) _____ EASTINGS (X) _____
 CALCULATE PER R/S 27/58

SKETCH: (Include reference tie or witness points, remarks and topo of area)



SURVEYOR'S CERTIFICATE
 THIS CORNER RECORD WAS PREPARED BY ME OR UNDER MY DIRECTION IN CONFORMANCE WITH THE LAND SURVEYORS ACT ON August 16 1984
 SIGNED: Douglas A. Breadahl
 L.S. or R.C.E. No. LS 4509

COUNTY SURVEYOR'S CERTIFICATE
 THE CORNER RECORD WAS RECEIVED AND EXAMINED AND FILED 9/18/84 1984
 BY [Signature]
 TITLE: _____
 DOCUMENT No. _____
 STATEMENT ON BACK OF SHEET YES NO

SEAL