

CORNER RECORD

COUNTY OF MADERA T. B9 R. 77E MD MERIDIAN CALIFORNIA

CORNER TYPE: GOV'T. CORNER MEANDER RANCHO CONTROL OTHER

RECORDED IDENTIFICATION — DATE OF VISIT A-15-75 1975



SW COR, SEC 23, T B9, R 77E, MDB&M

CORNER — LEFT AS FOUND FOUND AND TAGGED REESTABLISHED OBLITERATED CORNER REBUILT

PHYSICAL DESCRIPTION OF CORNER FOUND; EVIDENCE AND METHOD USED TO IDENTIFY OR REESTABLISH

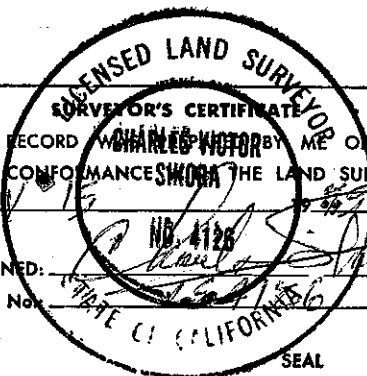
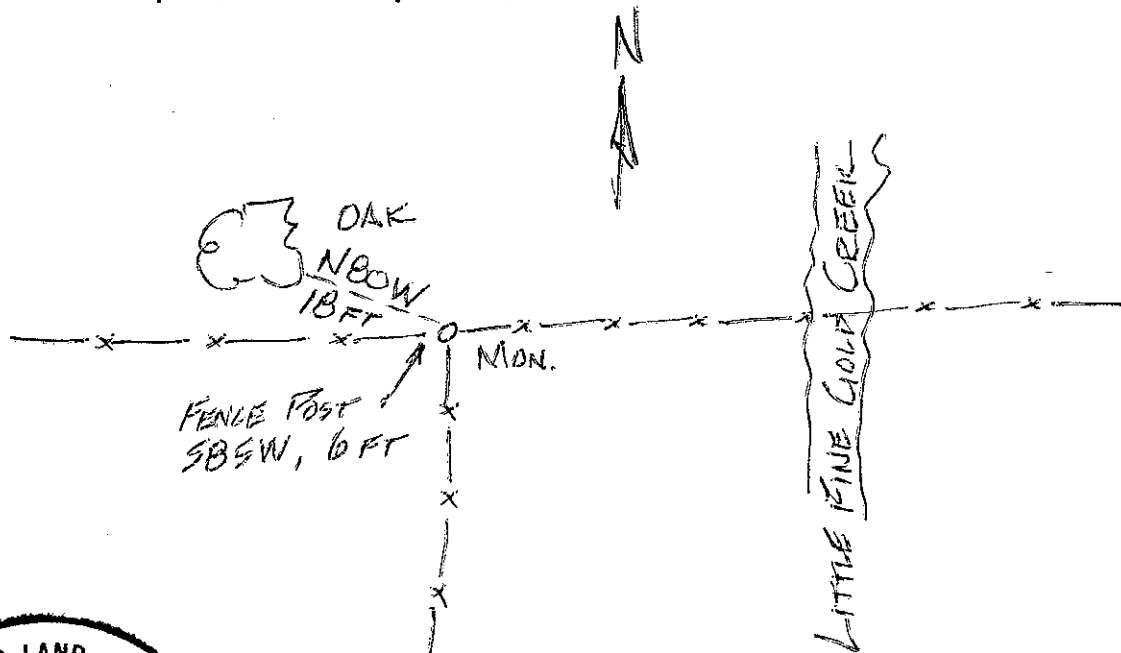
FOUND 3/4" IRON PIPE WITH UNION AND "T" SECTION.

PHYSICAL DESCRIPTION OF MONUMENTS REBUILT OR PERPETUATED

SET NEW 3/4" IRON PIPE WITH 2" BRASS CAP

CALIFORNIA COORDINATE SYSTEM ORDER: FIRST SECOND THIRD
 STATIONS USED: NGS (USC & GS) STATE COUNTY OTHER STATION _____ STATION _____
 ELEVATION _____ NORTHINGS (Y) _____ EASTINGS (X) _____

SKETCH: (Include reference tie or witness points, remarks and topo of area)



THIS CORNER RECORD WAS RECEIVED BY ME OR UNDER MY DIRECTION, IN CONFORMANCE WITH THE LAND SURVEYORS ACT ON MAY 15 1975

SIGNED: _____

L.S. or R.C.E. No. _____

SEAL

COUNTY SURVEYOR'S CERTIFICATE

THE CORNER RECORD WAS RECEIVED 6-6 1975 AND EXAMINED AND FILED June 9 1975

BY: AOP/Protz

TITLE: County Engineer

DOCUMENT No. 75-21-06

STATEMENT ON BACK OF SHEET

YES NO