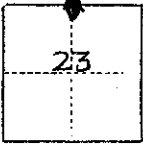


CORNER RECORD

COUNTY OF Madera T. 8S R. 22E MPB+M MERIDIAN CALIFORNIA

CORNER TYPE: GOV'T. CORNER MEANDER RANCHO CONTROL OTHER

CORNER IDENTIFICATION — DATE OF VISIT _____ 19__



CORNER — LEFT AS FOUND FOUND AND TAGGED REESTABLISHED OBLITERATED CORNER REBUILT

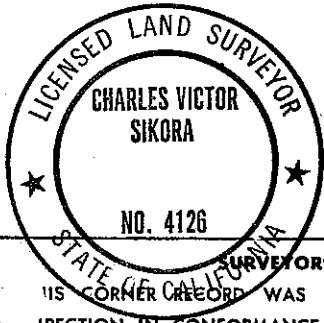
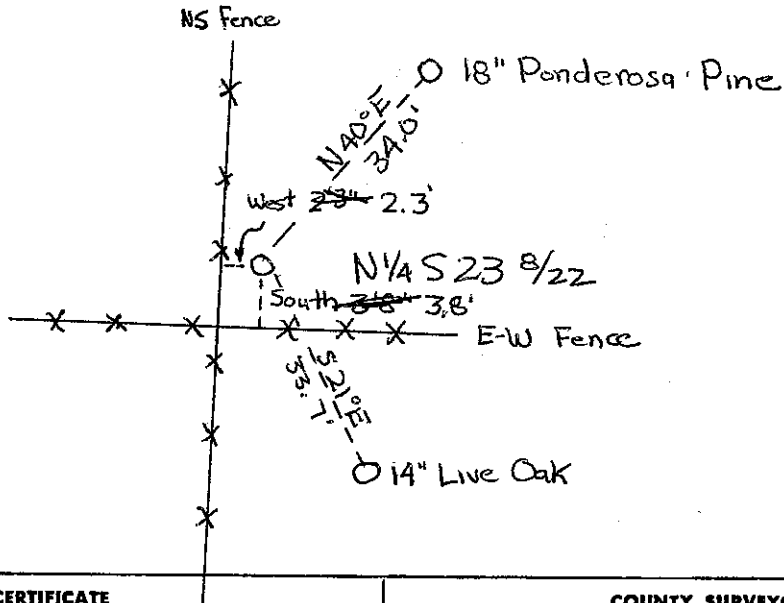
PHYSICAL DESCRIPTION OF CORNER FOUND; EVIDENCE AND METHOD USED TO IDENTIFY OR REESTABLISH

set $\frac{3}{4}$ " ip with Brass Cap ($1\frac{1}{4}$ ") LS 4126
 stamped
 T8S R 22E
 14
 23
 LS 4126

PHYSICAL DESCRIPTION OF MONUMENTS REBUILT OR PERPETUATED

CALIFORNIA COORDINATE SYSTEM ORDER: FIRST SECOND THIRD
 STATIONS USED: NGS (USC & GS) STATE COUNTY OTHER STATION _____ STATION _____
 ELEVATION _____ NORTHINGS (Y) _____ EASTINGS (X) _____

SKETCH: (Include reference tie or witness points, remarks and topo of area)



SURVEYOR'S CERTIFICATE
 THIS CORNER RECORD WAS PREPARED BY ME OR UNDER MY DIRECTION IN CONFORMANCE WITH THE LAND SURVEYORS ACT ON June 13 19 79

SIGNED: Charles Victor Sikora
 L.S. or R.C.E. No.: LS 4126

SEAL

COUNTY SURVEYOR'S CERTIFICATE
 THE CORNER RECORD WAS RECEIVED _____ 19__ AND EXAMINED AND FILED AUG 21 19 79
 BY: A. Grote
 TITLE: County Engineer

DOCUMENT No. _____

STATEMENT ON BACK OF SHEET

YES NO