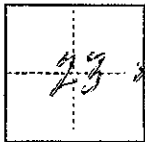


CORNER RECORD

COUNTY OF MADERA T. B5 R. 47E 117 MERIDIAN CALIFORNIA

CORNER TYPE: GOV'T. CORNER  MEANDER  RANCHO  CONTROL  OTHER

IDENTIFICATION — DATE OF VISIT APRIL 10 19 75



E 1/4 COR, SEC 23, T34N, R22E, MDB&M

CORNER — LEFT AS FOUND  FOUND AND TAGGED  REESTABLISHED OBLITERATED CORNER  REBUILT

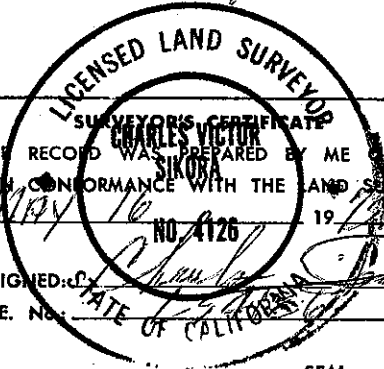
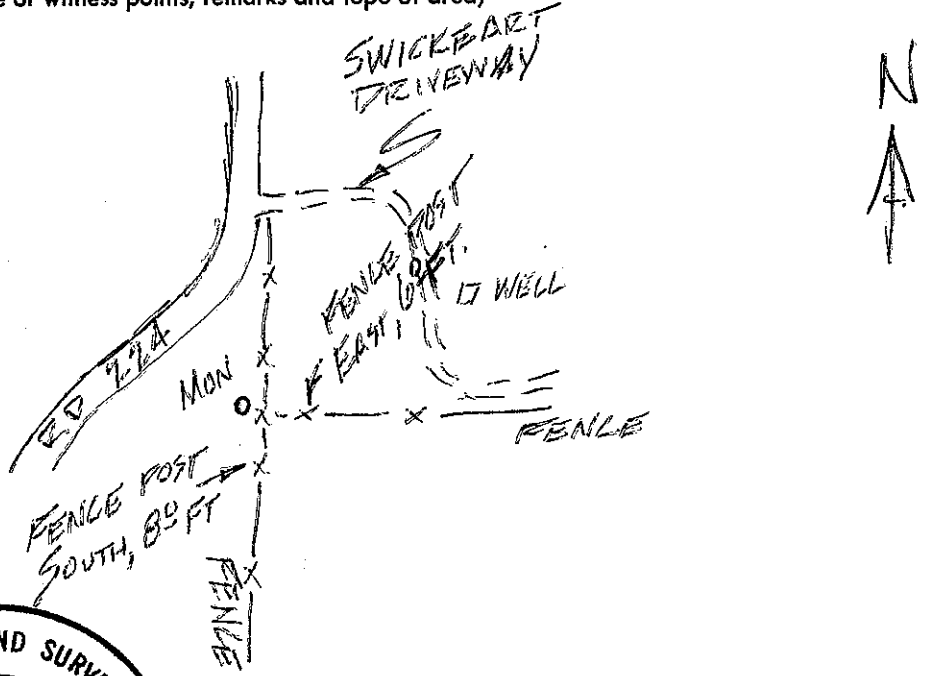
PHYSICAL DESCRIPTION OF CORNER FOUND; EVIDENCE AND METHOD USED TO IDENTIFY OR REESTABLISH

FOUND 1 1/2" IRON PIPE WITH 1" BRASS CAP STAMPED 652854

PHYSICAL DESCRIPTION OF MONUMENTS REBUILT OR PERPETUATED

CALIFORNIA COORDINATE SYSTEM ORDER: FIRST  SECOND  THIRD   
STATIONS USED: NGS (USC & GS)  STATE  COUNTY  OTHER  STATION \_\_\_\_\_ STATION \_\_\_\_\_  
E \_\_\_\_\_ ELEVATION \_\_\_\_\_ NORTHINGS (Y) \_\_\_\_\_ EASTINGS (X) \_\_\_\_\_

SKETCH: (Include reference tie or witness points, remarks and topo of area)



THIS CORNER RECORD WAS PREPARED BY ME OR UNDER MY DIRECTION IN CONFORMANCE WITH THE LAND SURVEYORS ACT ON MAY 16 19 75  
SIGNED: [Signature]  
L.S. or R.C.E. No. \_\_\_\_\_

COUNTY SURVEYOR'S CERTIFICATE  
THE CORNER RECORD WAS RECEIVED 6-6 19 75  
AND EXAMINED AND FILED June 9, 1975  
BY: Alfred O. Grote  
TITLE: County Engineer  
DOCUMENT No. 75-21-04

STATEMENT ON BACK OF SHEET YES  NO