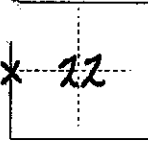


CORNER RECORD

COUNTY OF MADERA T. 8S R. 22E MD MERIDIAN CALIFORNIA

CORNER TYPE: GOV'T. CORNER MEANDER RANCHO CONTROL OTHER

CORNER IDENTIFICATION — DATE OF VISIT 7-7 19 76



W 1/4 COR SEC 22, T8S, R22E
E 1/4 COR SEC 21 " "

CORNER — LEFT AS FOUND FOUND AND TAGGED REESTABLISHED OBLITERATED CORNER REBUILT

PHYSICAL DESCRIPTION OF CORNER FOUND; EVIDENCE AND METHOD USED TO IDENTIFY OR REESTABLISH

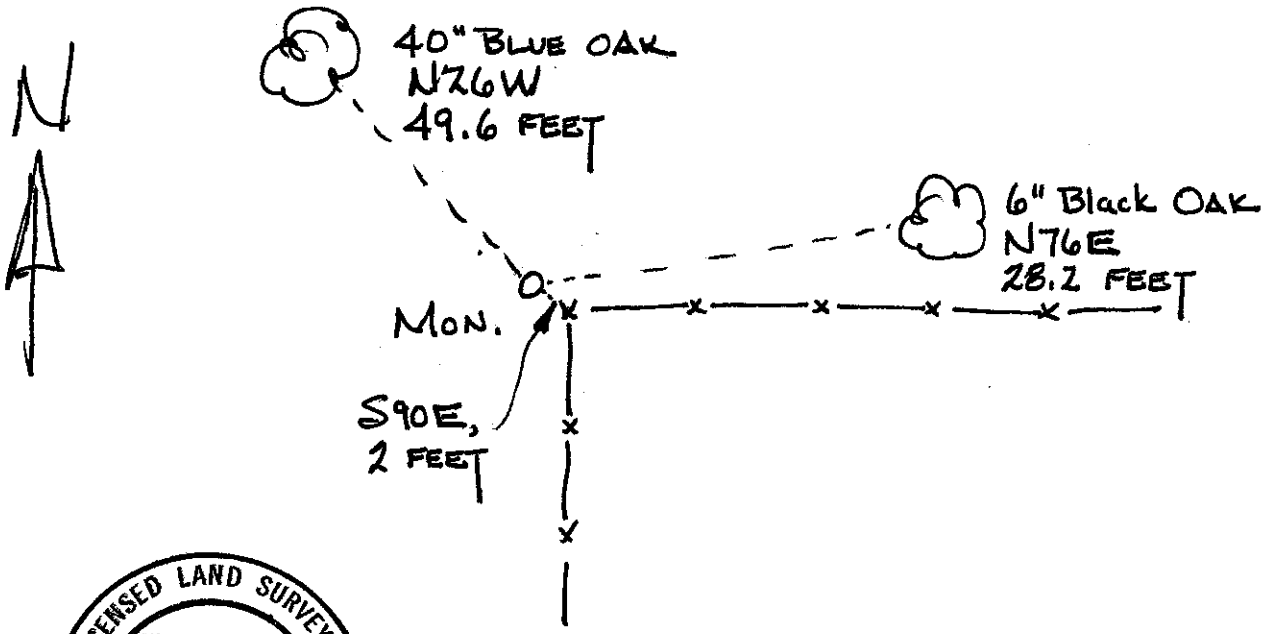
FOUND 1 1/2" IRON PIPE AT FENCE INTERSECTION. PIPE SET IN ROCK MOUND. CORNER SHOWN TO ME BY ONE OF THE OWNERS, JACK BROQUIST. EVIDENCE OF USE BY OTHER SURVEYORS ABOUNDS.

PHYSICAL DESCRIPTION OF MONUMENTS REBUILT OR PERPETUATED

TAGGED PIPE WITH 2" BRASS CAP. SET SHINNERS IN WITNESS TREES

CALIFORNIA COORDINATE SYSTEM ORDER: FIRST SECOND THIRD
STATIONS USED: NGS (USC & GS) STATE COUNTY OTHER STATION _____ STATION _____
ZONE _____ ELEVATION _____ NORTHINGS (Y) _____ EASTINGS (X) _____

SKETCH: (Include reference tie or witness points, remarks and topo of area)



THIS CORNER RECORD WAS PREPARED BY ME OR UNDER MY DIRECTION IN CONFORMANCE WITH THE LAND SURVEYORS ACT
ON _____ 1976
SIGNED: _____
L.S. or R.C.E. No.: LS 4126

COUNTY SURVEYOR'S CERTIFICATE
THE CORNER RECORD WAS RECEIVED 7-12 19 76
AND EXAMINED AND FILED July 12 1976
BY: Joe Billman
TITLE: Civil Engr. Asst.
DOCUMENT No. 76-16.3

SEAL

STATEMENT ON BACK OF SHEET

YES NO